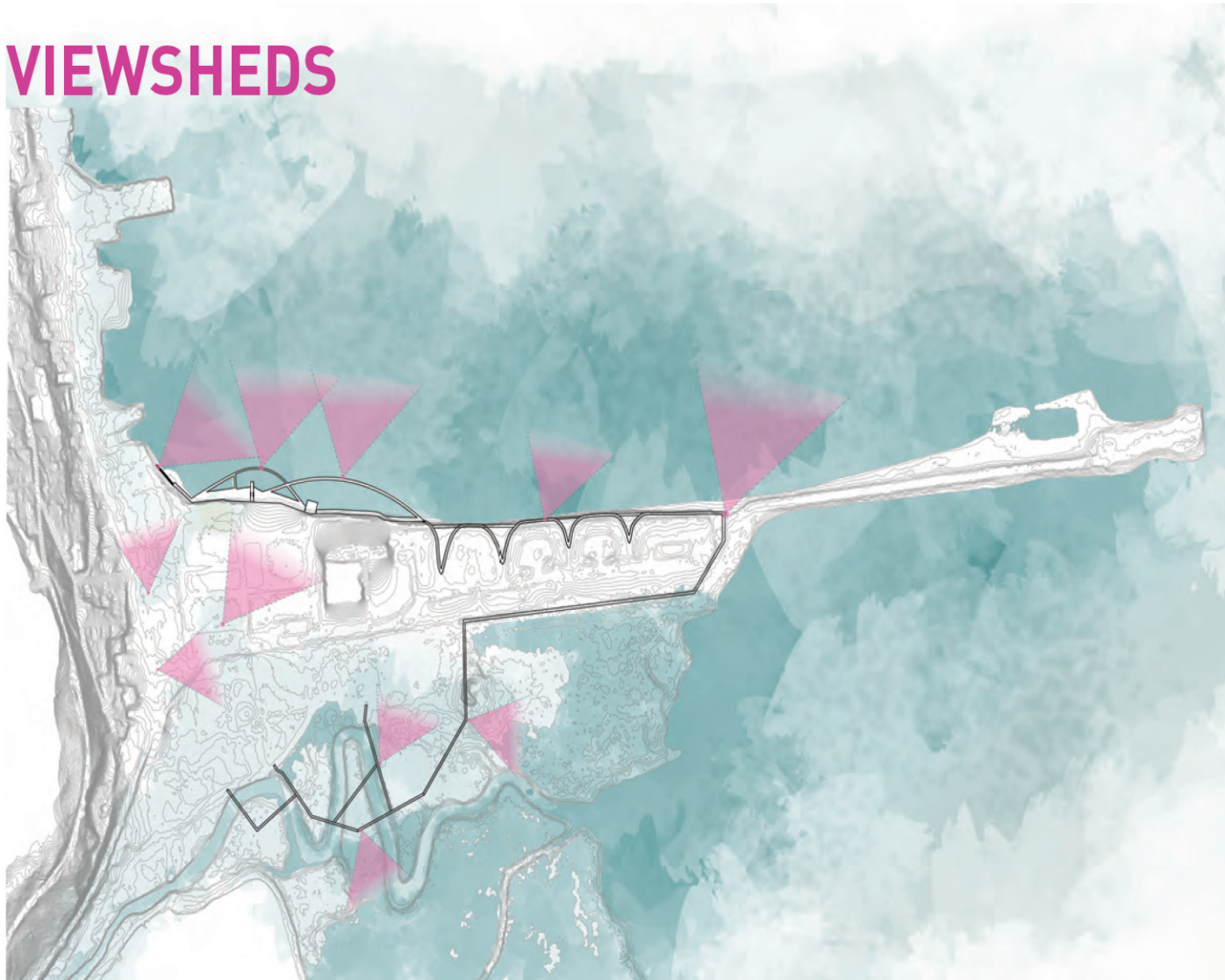


# [RE]APPEARING PIERMONT

Blake Enos | Sage Magee | Jacob Kuhn

Piermont is a community situated amongst a natural landscape, deeply connected to the Hudson River. Our project aims to enhance Piermont's relationship with nature and the Hudson through strengthening all of the places and connections that give Piermont its unique identity. In this way, we see Piermont as “reappearing” because it emerges as an example of a climate adaptive community that can withstand flood waters as they come.

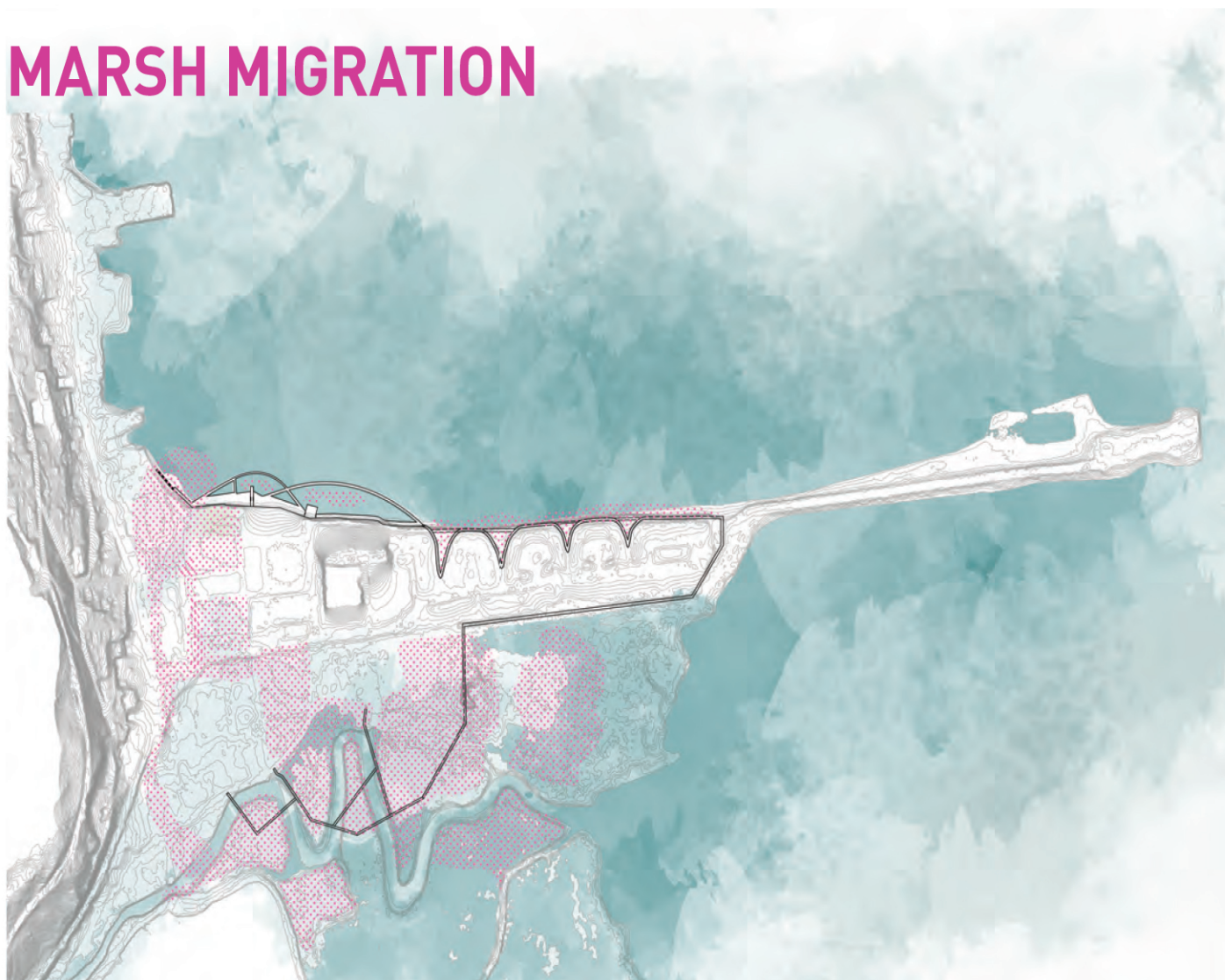
## VIEWSHEDS



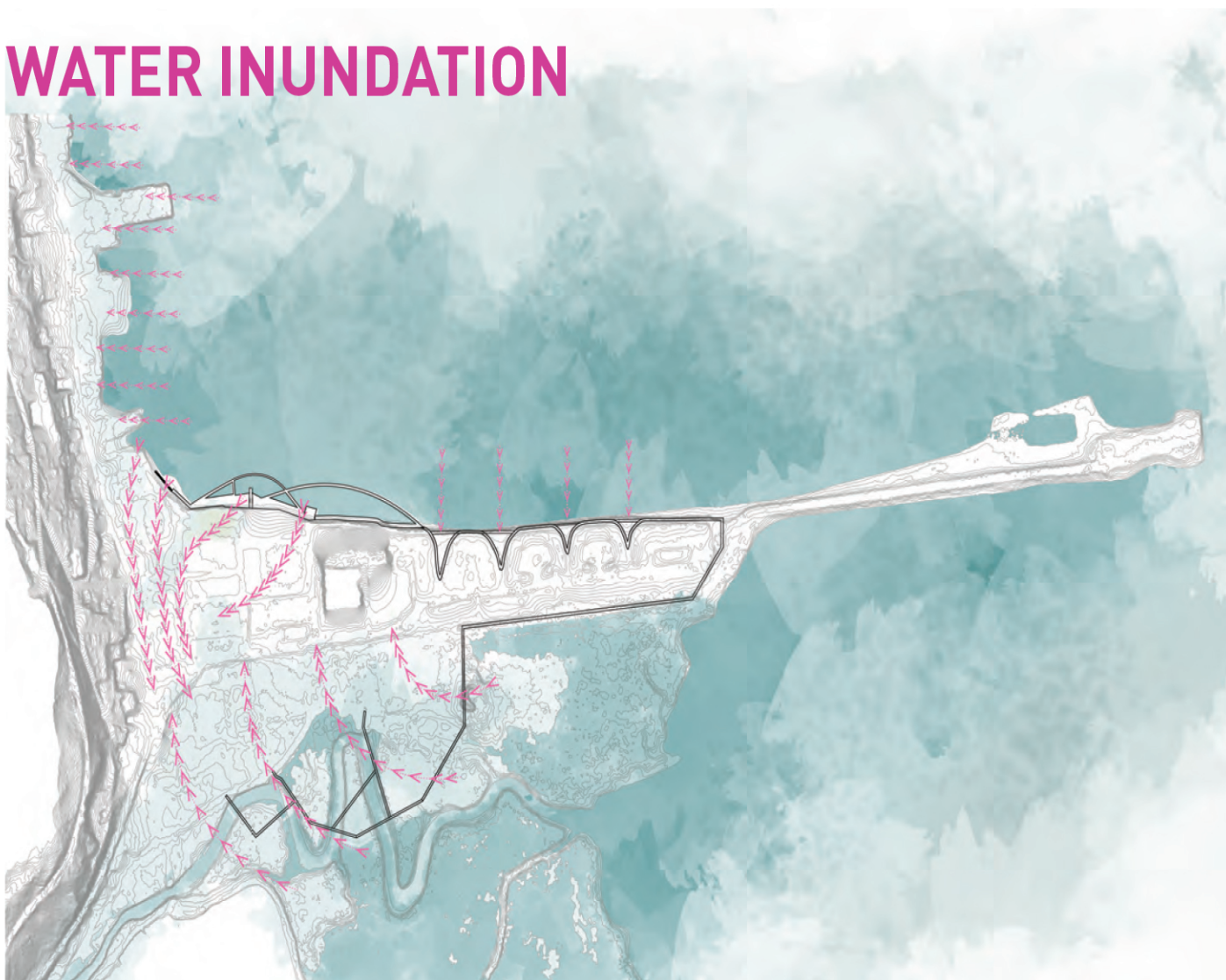
## RESIDENTIAL NEIGHBORHOODS



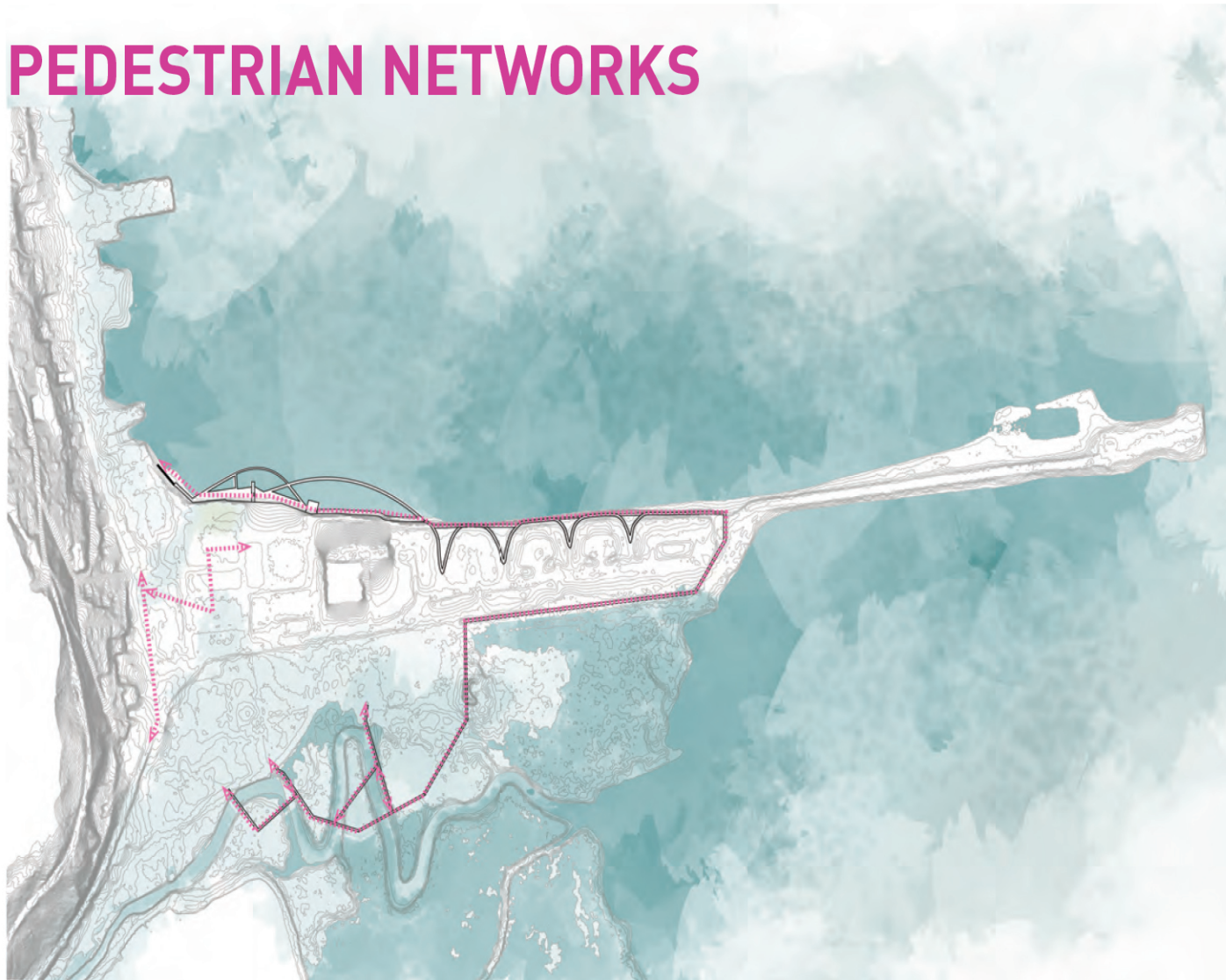
## MARSH MIGRATION



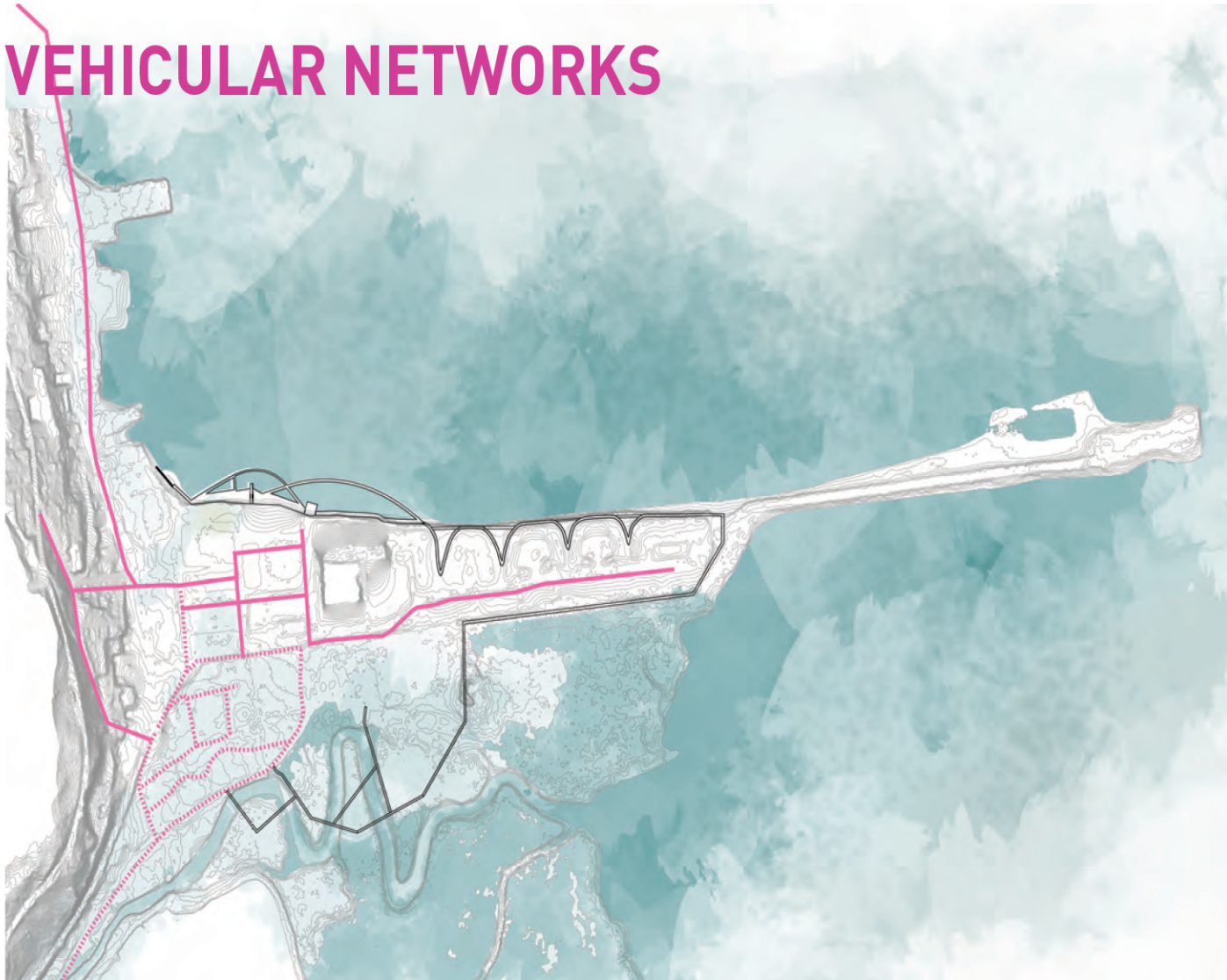
## WATER INUNDATION



## PEDESTRIAN NETWORKS



## VEHICULAR NETWORKS





# [RE]IMAGINING PIERMONT



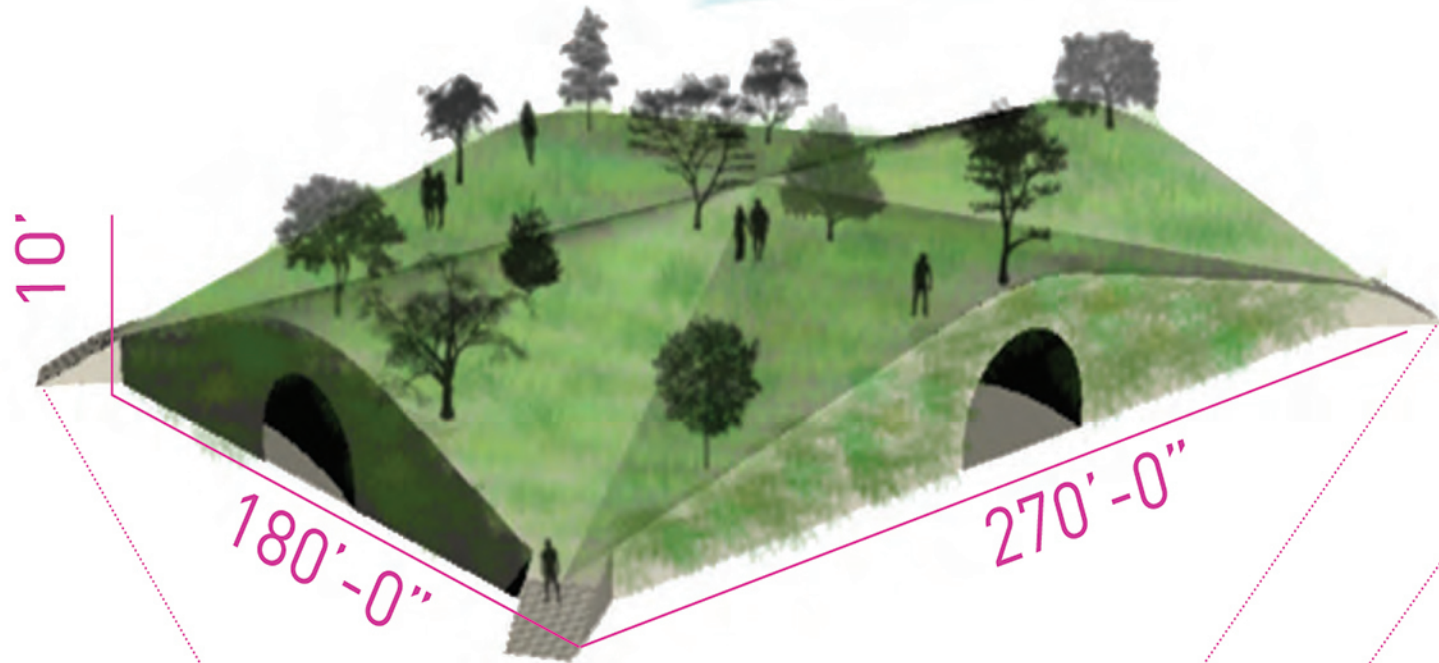
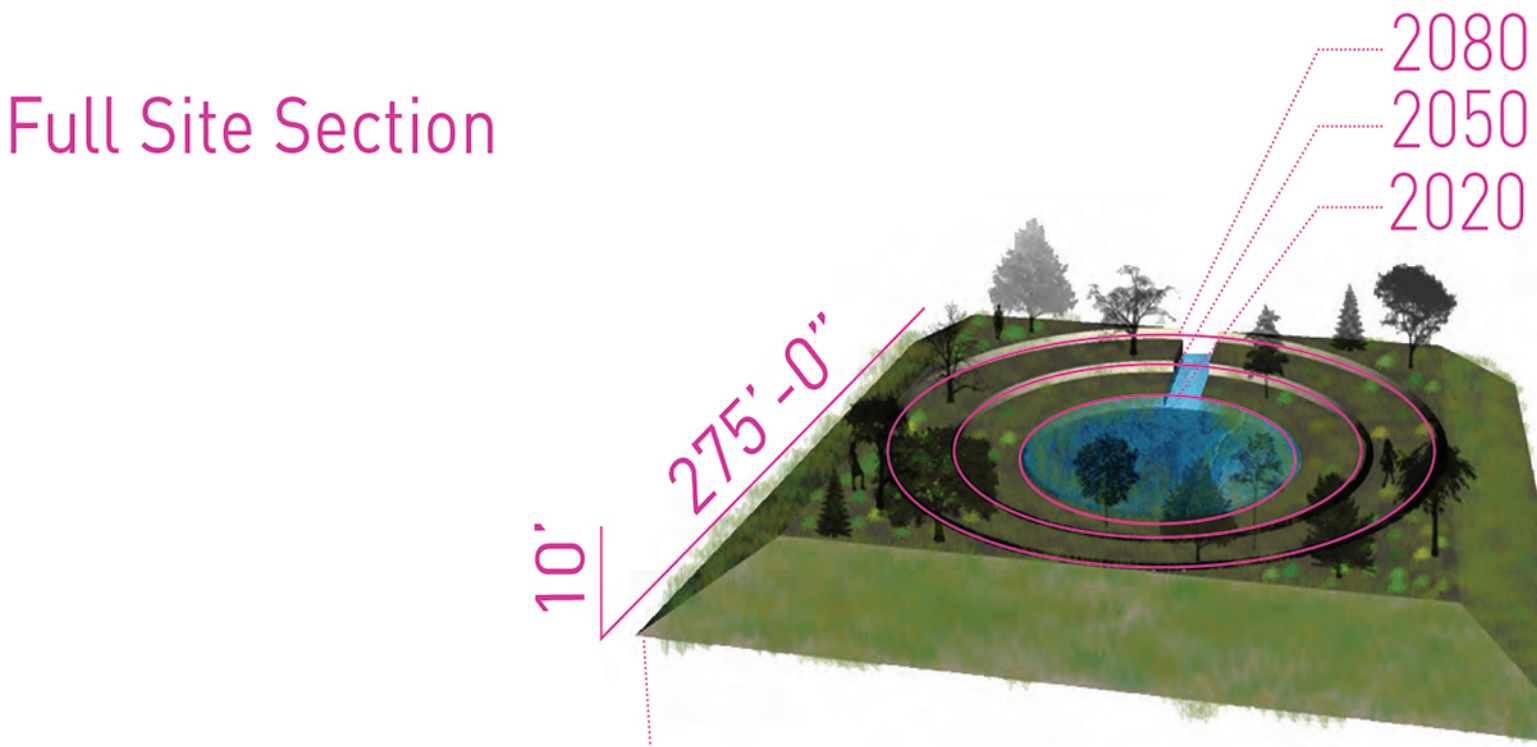
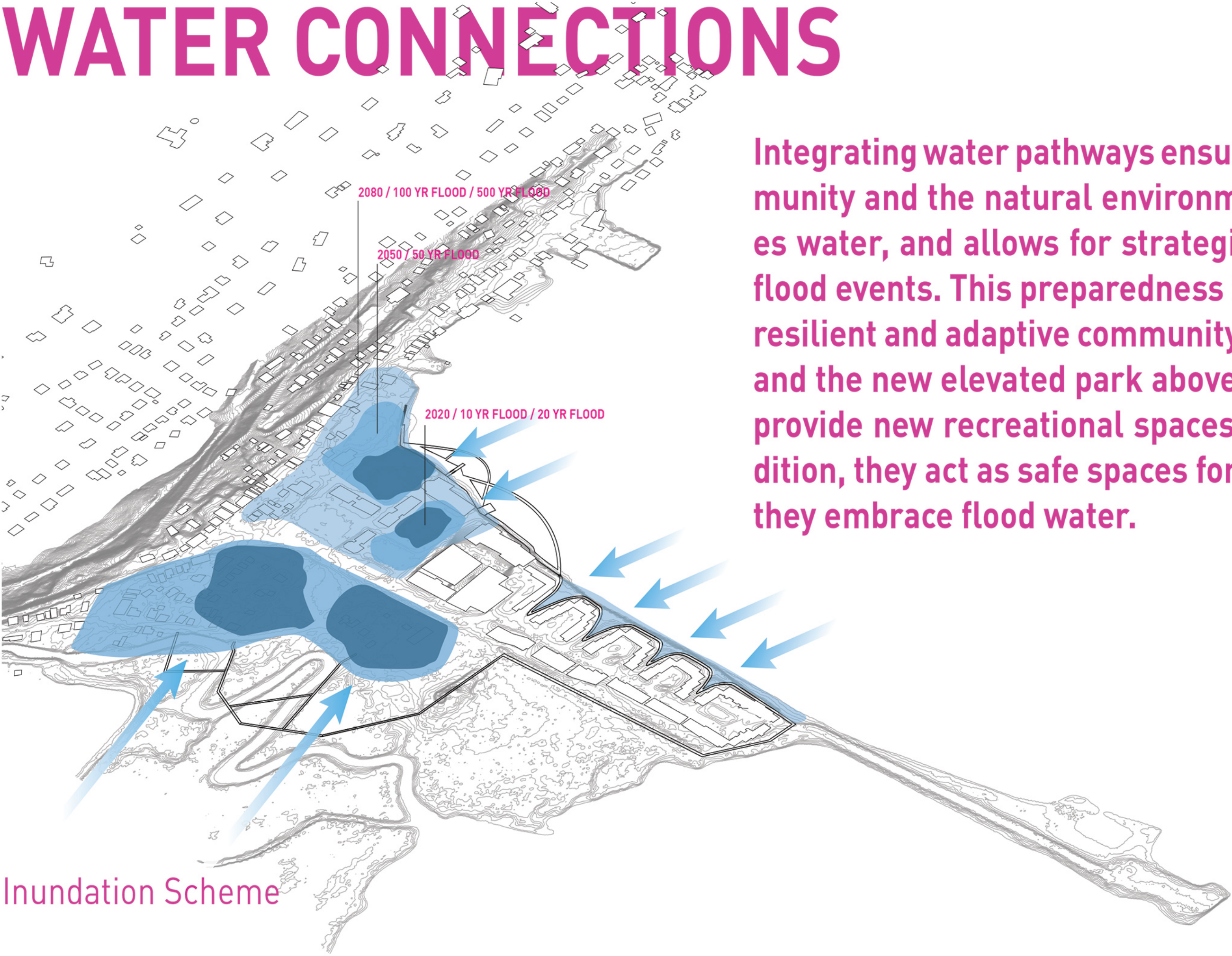


# WATER CONNECTIONS

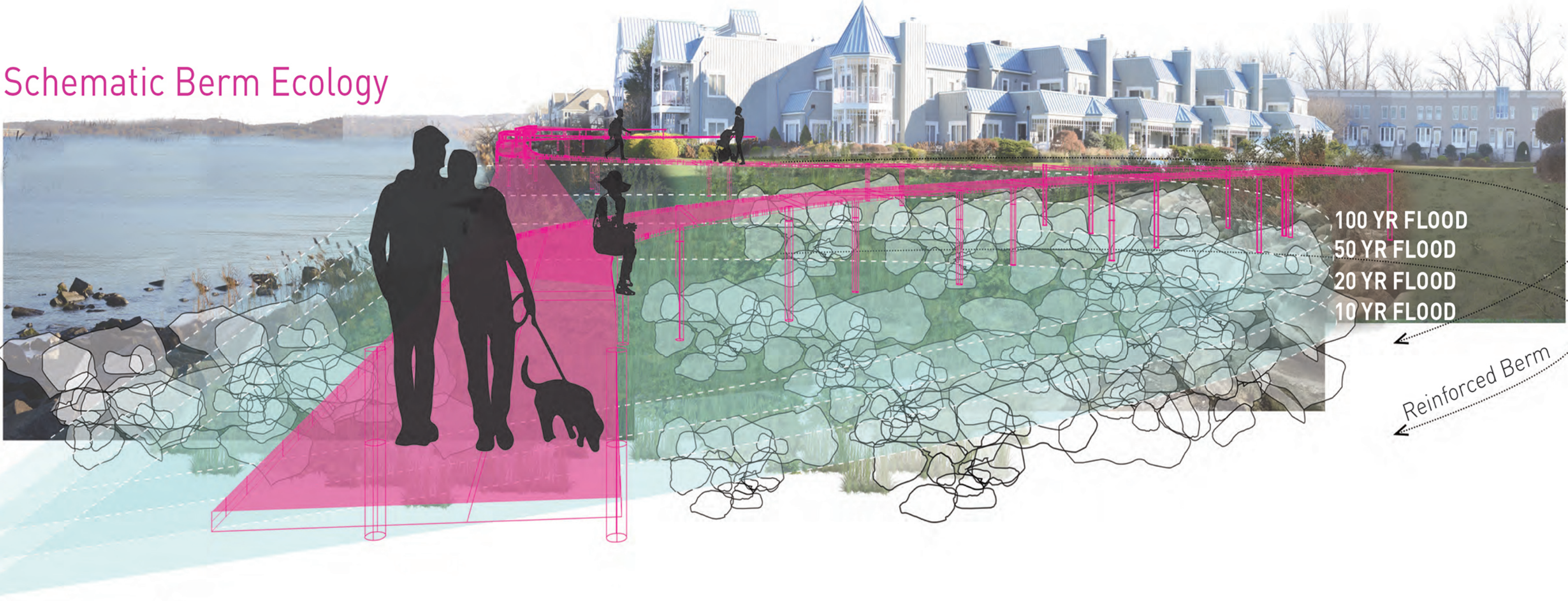
Integrating water pathways ensures a greater balance between the community and the natural environment of Piermont. Our concept embraces water, and allows for strategic inundation during both high tide and flood events. This preparedness for living with water makes Piermont a resilient and adaptive community. In both the reimagined Flywheel Park and the new elevated park above an existing parking lot, the structures provide new recreational spaces, as well as enhanced greenery. In addition, they act as safe spaces for residents in times of flood events, and they embrace flood water.

Inundation Scheme

Full Site Section



Schematic Berm Ecology



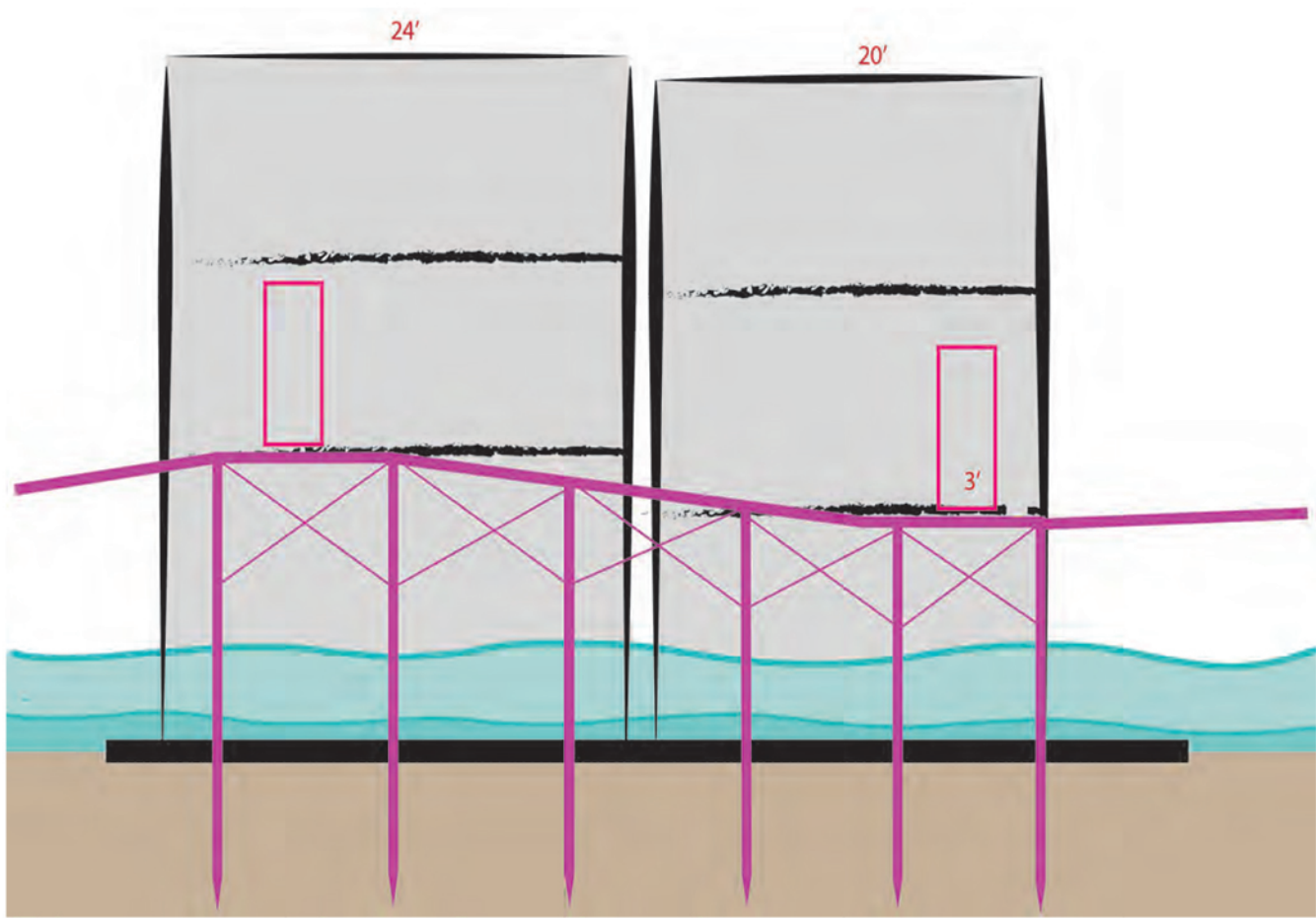
Berm & Swale



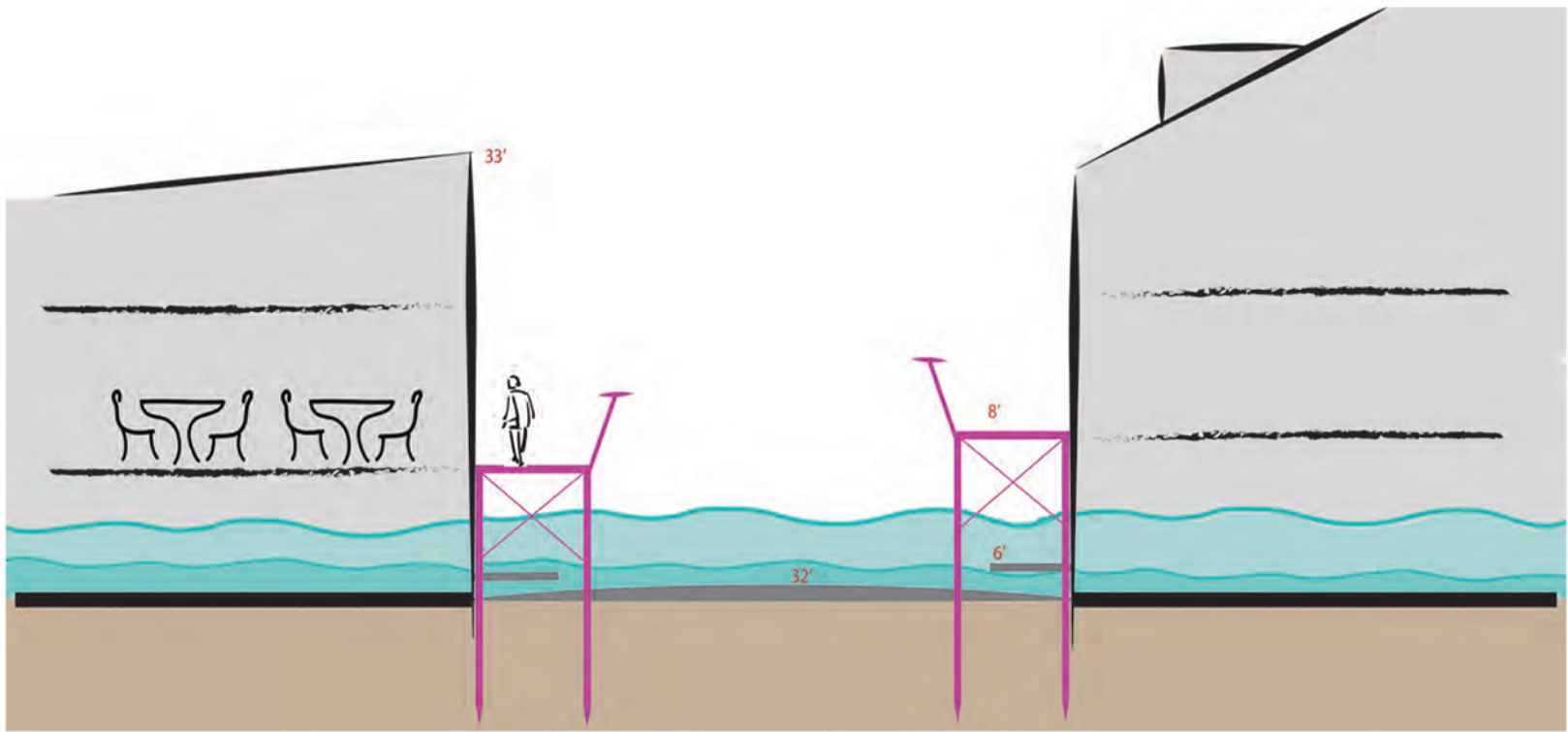


# GREEN CONNECTIONS

Piermont Avenue is the cultural and economic hub of Piermont, and preserving it is essential to the continuation of Piermont’s identity in the future. We envision Piermont Avenue as a pedestrian-friendly place with a green corridor that assists both marsh migration and water inundation in flood events. Along with Piermont Avenue, we also envision Bogertown and the Patch as places fully integrated within the natural migrating marsh, where people can easily access the water and where their homes can adapt to daily fluctuating water levels.



Piermont Ave. Section 1

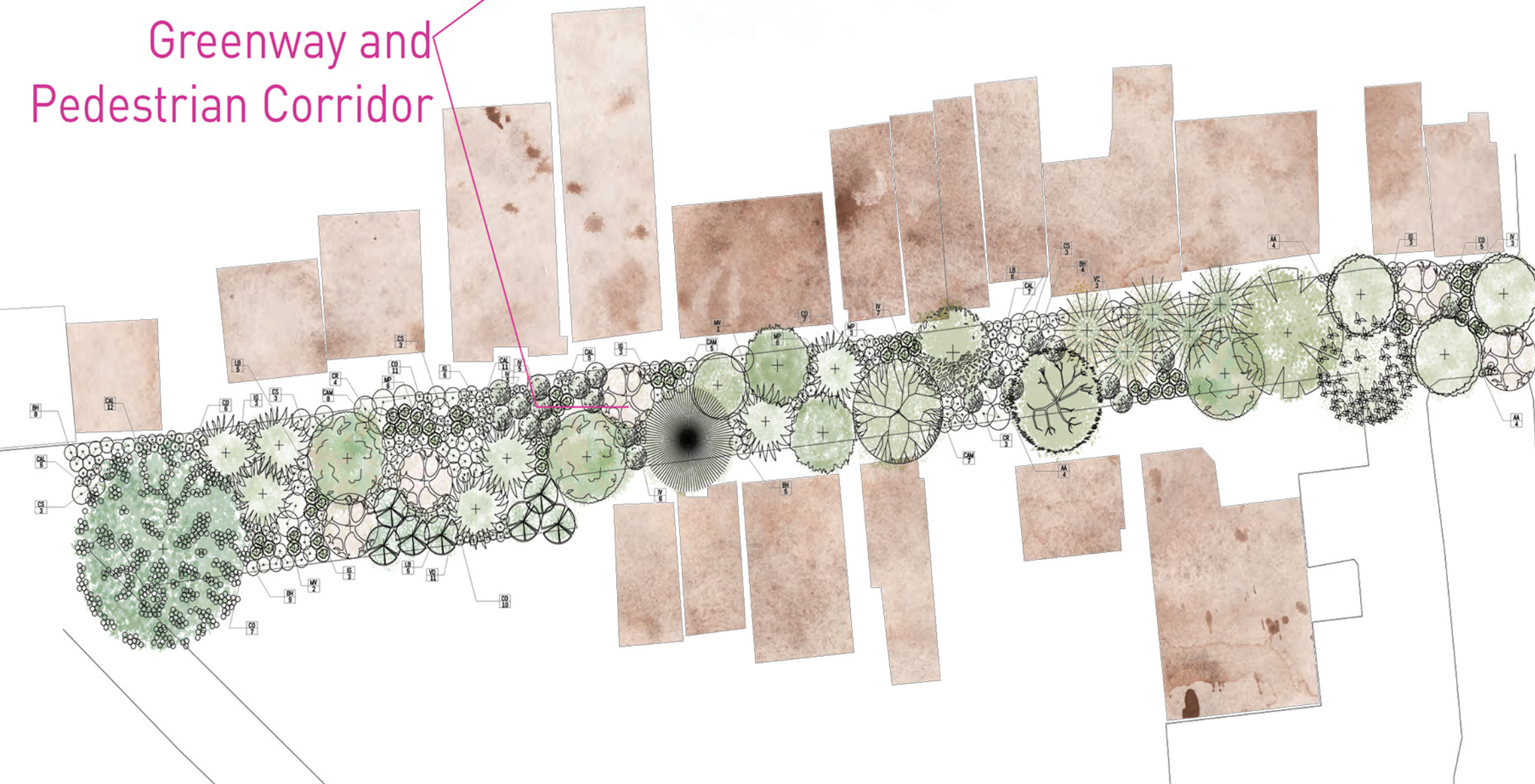


Piermont Ave. Section 2



Piermont Ave. Aerial

Piermont Avenue Greenway and Pedestrian Corridor



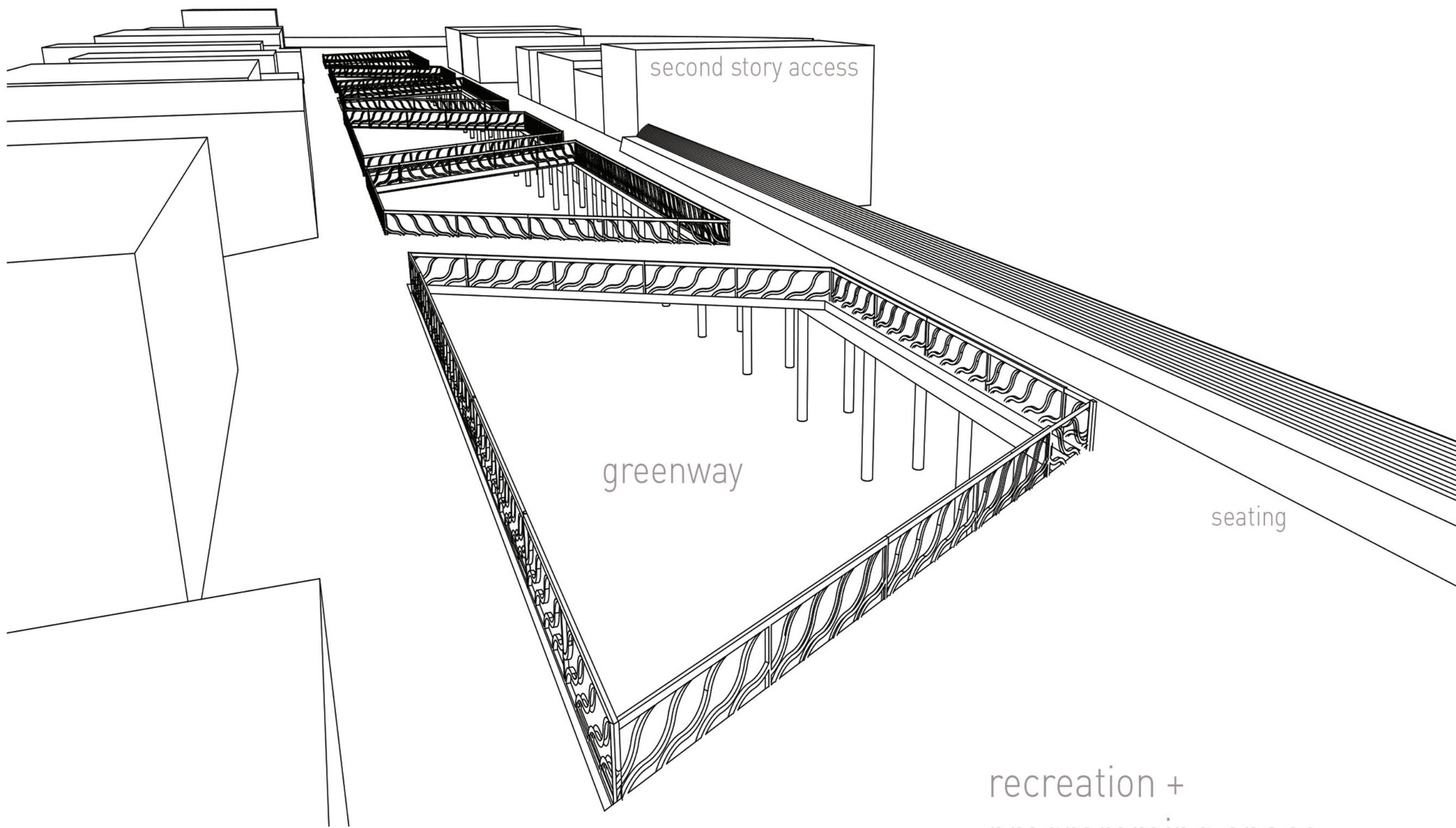
Piermont Ave. Greenway Planting Scheme

## TREES

- Acer negundo // Boxelder Maple
- Acer rubrum // Red Maple
- Acer saccharinum // Silver Maple
- Amelanchier canadensis // Shadblow Serviceberry
- Betula populifolia // Gray Birch
- Betula nigra // River Birch
- Nyssa sylvatica // Black Tupelo
- Pinus rigida // Pitch Pine
- Platanus x acerifolia // Plane Tree
- Populus deltoides // Eastern Cottonwood
- Celtis occidentalis // Common Hackberry
- Liquidambar styraciflua // Sweetgum
- Quercus bicolor // Swamp White Oak
- Quercus palustris // Pin Oak
- Quercus phellos // Willow Oak
- Viburnum lentago // Nannyberry
- Salix nigra // Black Willow

## SHRUBS

AA	Aronia arbutifolia // Red Chokeberry
BH	Baccharis halimifolia // Eastern Baccharis
CD	Cephalanthus occidentalis // Common Buttonbush
CAL	Clethra alnifolia // Sweet Pepperbush
CAM	Cornus amomum // Silky Dogwood
CR	Cornus racemosa // Gray Dogwood
CS	Cornus sericea // Red Twig Dogwood
IG	Ilex glabra // Inkberry
IV	Ilex verticillata // Winterberry
LB	Lindera benzoin // Spicebush
MV	Magnolia virginiana // Sweet Bay Magnolia
MP	Myrica pensylvanica // Northern Bayberry
VC	Vaccinium corymbosum // Highbush Blueberry
VD	Viburnum dentatum // Arrowwood Viburnum

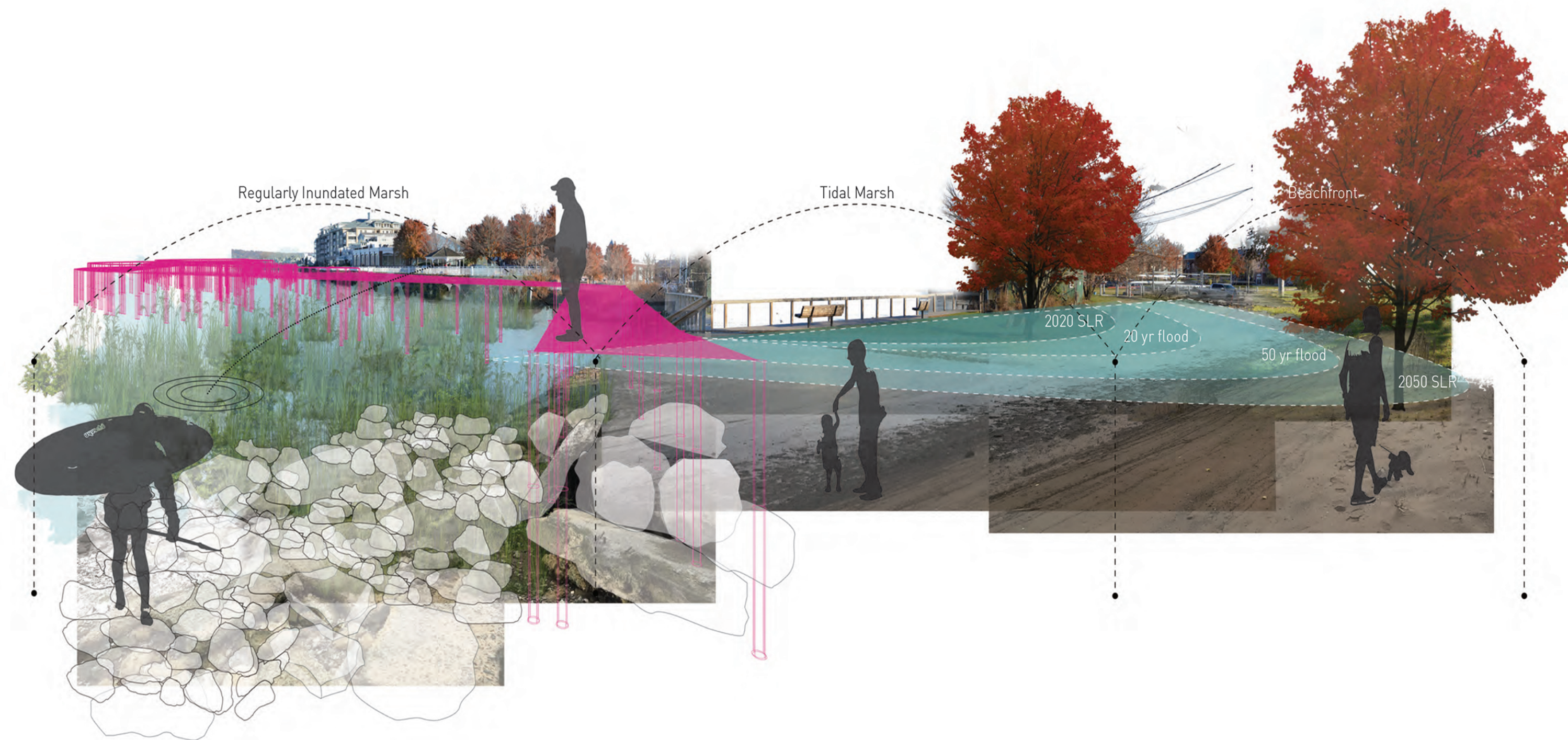


Pedestrian Walkway Schematic

recreation + programming space



# PEOPLE CONNECTIONS



Beachfront Schematic Ecology

Boardwalk Experience / Flood Event



Marsh Walkway Experience

