

Coexist With Time

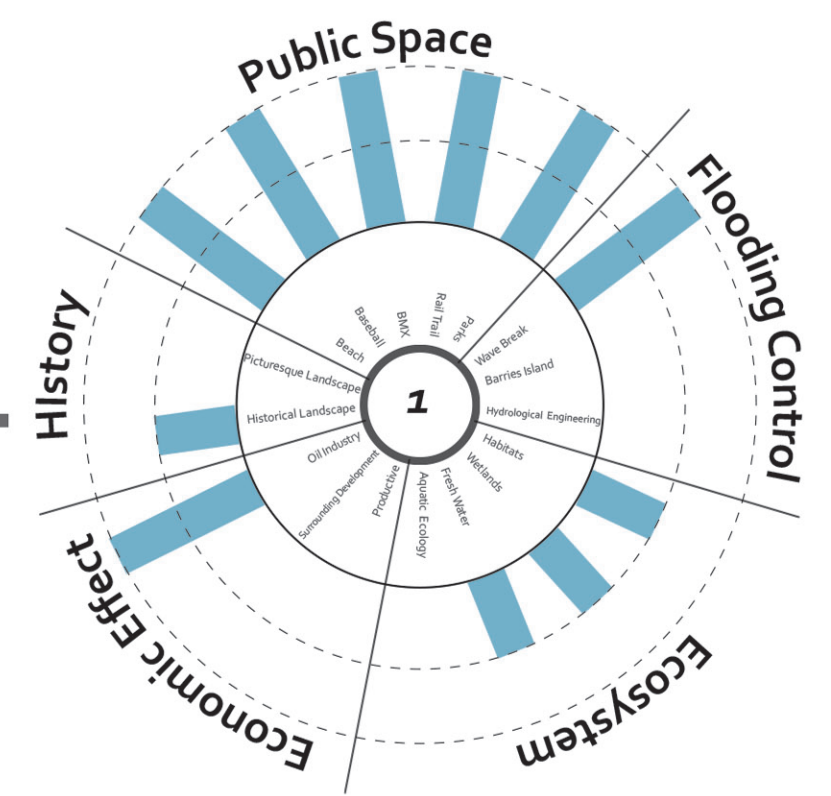
Kingston Point Park Redesign
Mengtian Song, Zhuo Cheng

Sea Level Rise

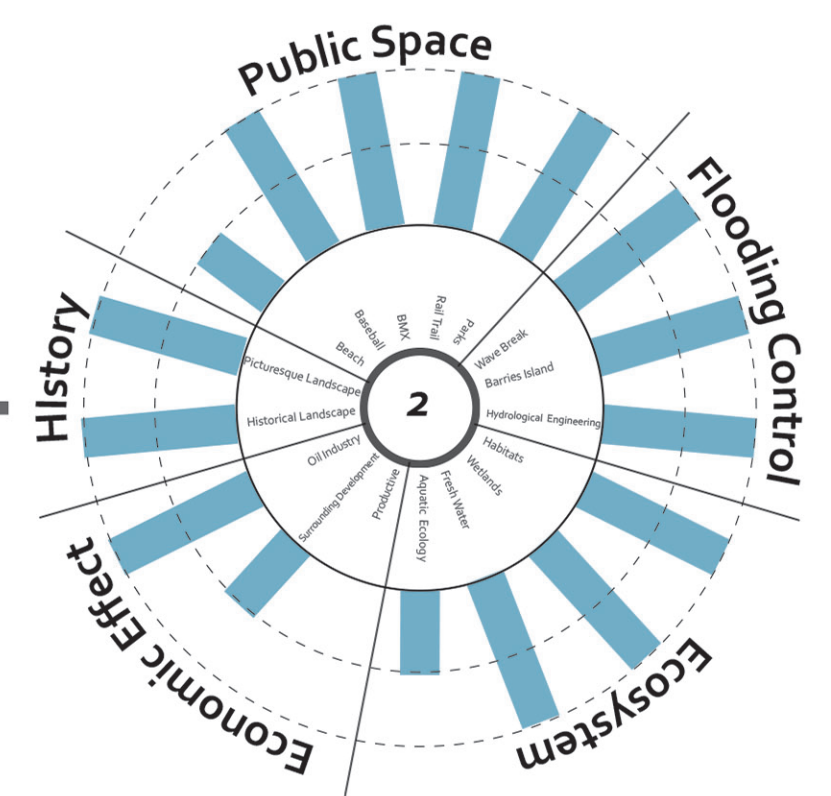


Landscape Value

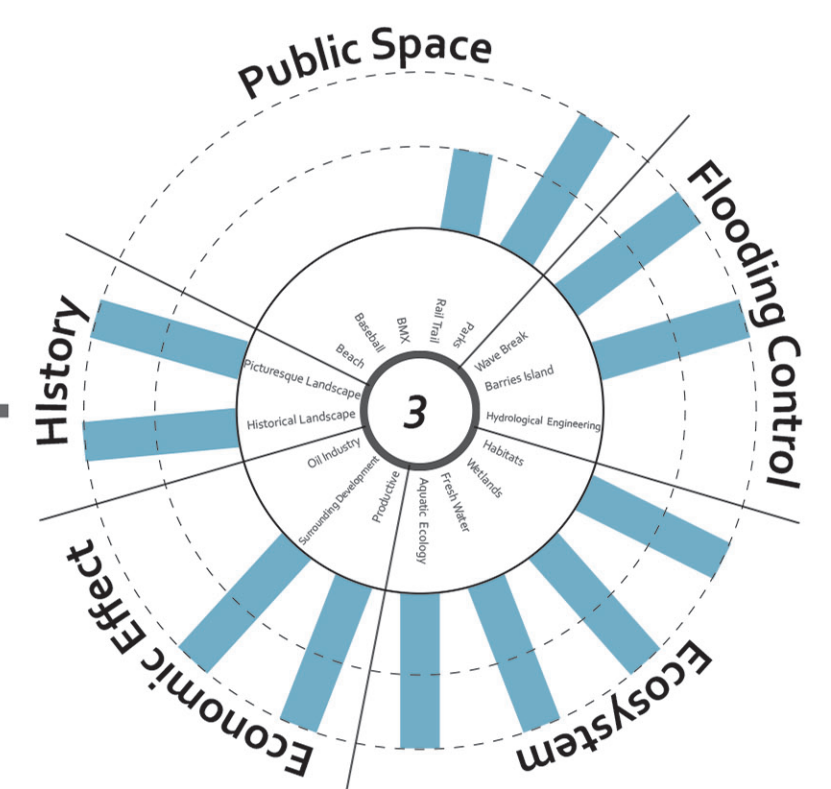
Phase I SLR 12"
Year 2020



Phase II SLR 30"
Year 2050



Phase III SLR 60"
Year 2080



Industrial Space

Potential Loss to Sea Level Rise

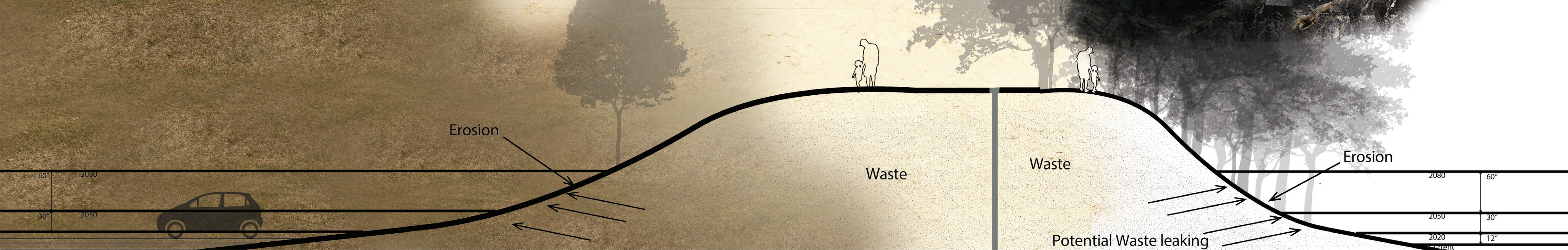
Meadow
Forest

Event Space

Sand Beach

Historical Space

Sea Level Rise Effect on Landfill

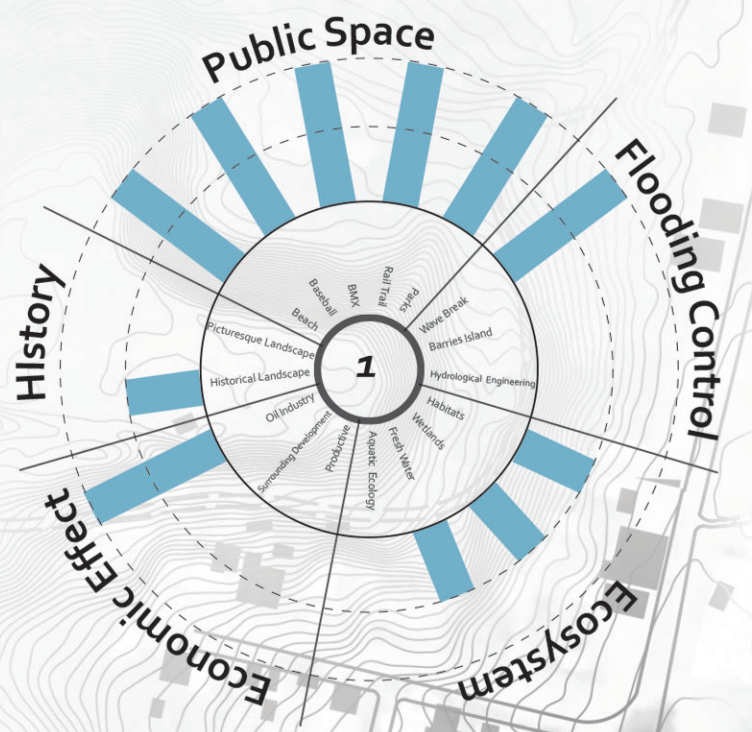


Phase I Vernacular Landscape

2020

A Quick Start

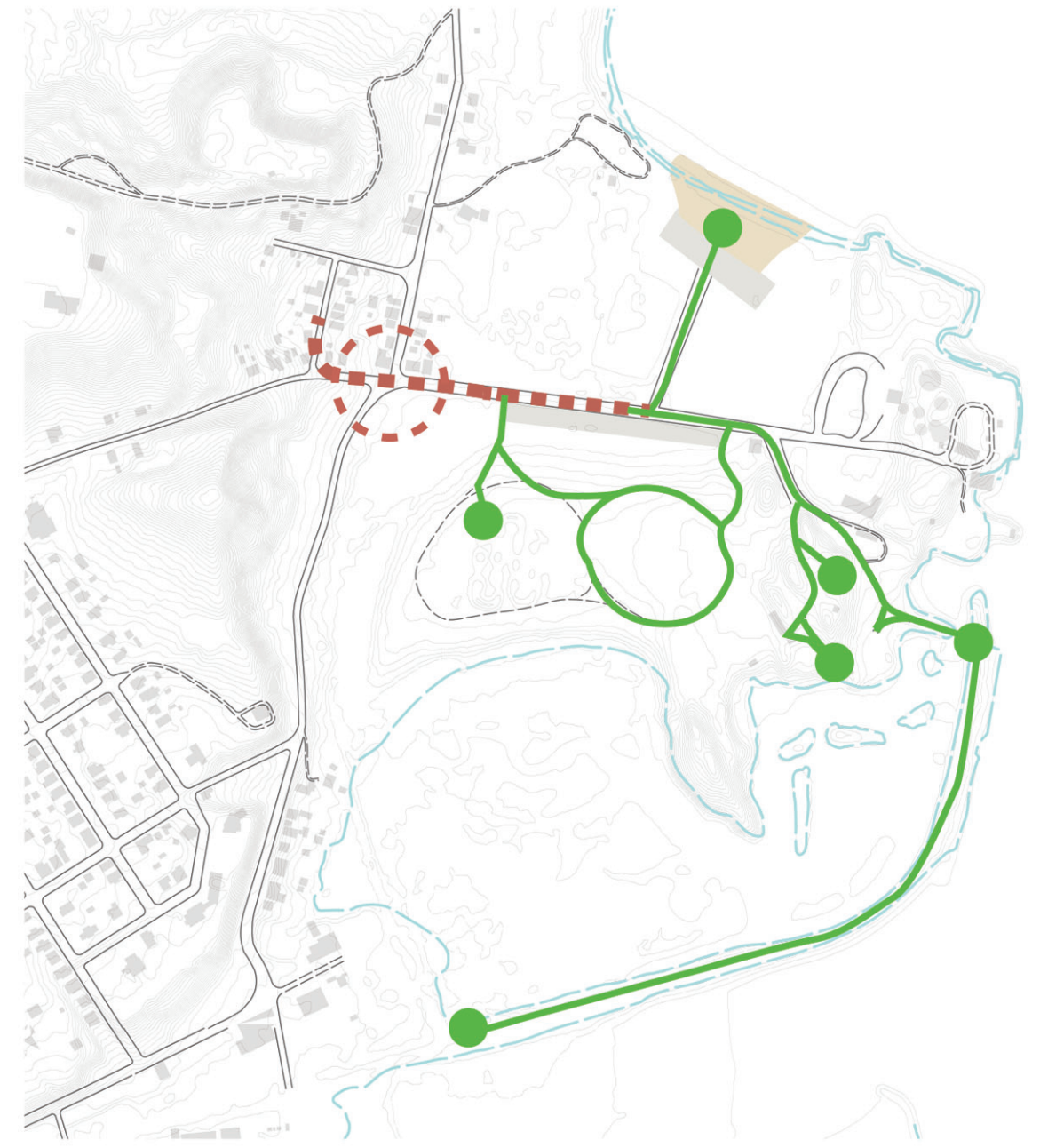
Metrics



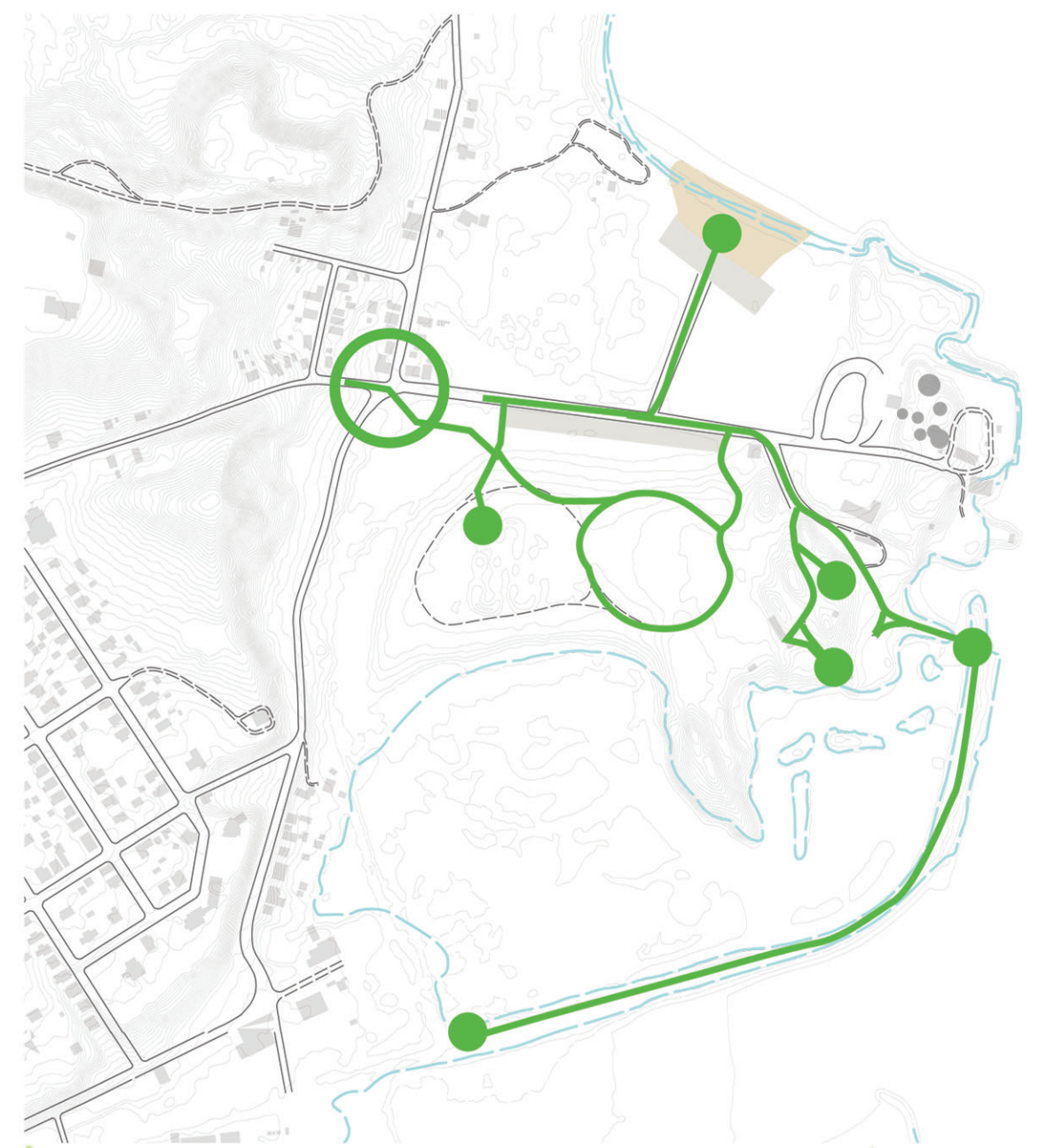
- Create New entrance to create a sense of arrival, a preview to park and a better connection
- Clean up messy vegetation to establish picturesque experiences

Circulation

Current Connection



Proposed Connection



Selected Plants



Carex stricta



Betula nigra



Scirpus validus



Acorus americanus



Andropogon gerardii



Verbena hastata



Wetland Experience



Divide Circulation

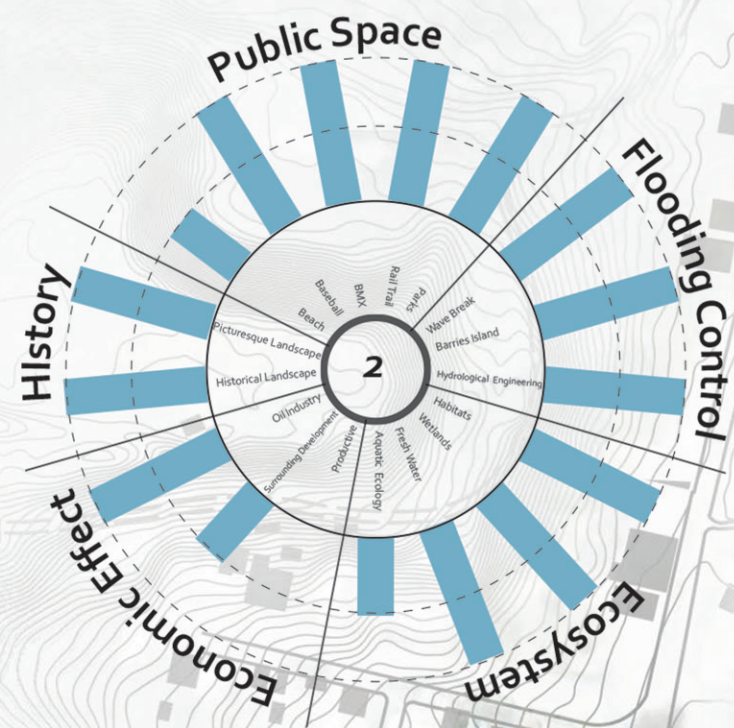
Constructed Wetland

Phase II Vibrant Landscape

2050

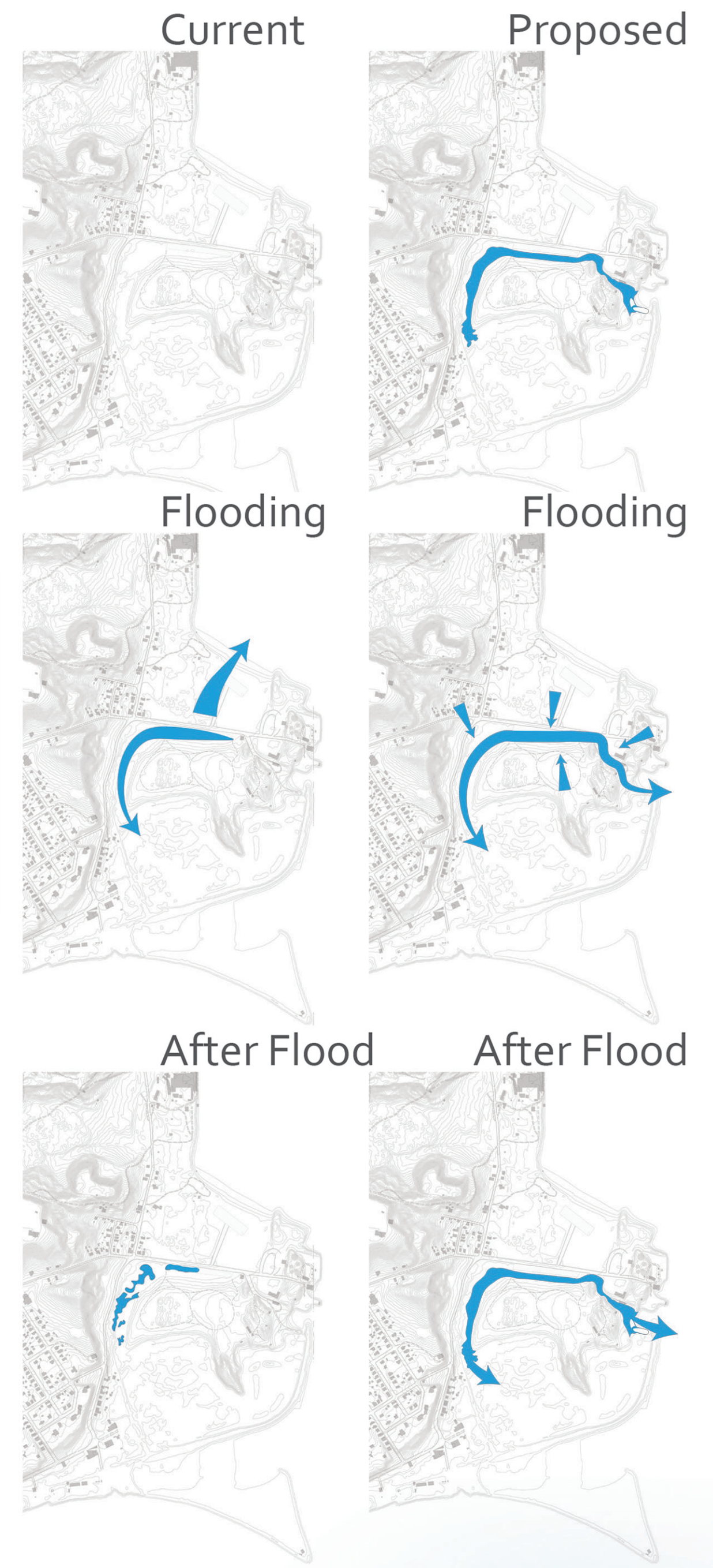
Resolve the Concerns of the Water

Metrics



- Cut a channel to collect flooding water during major flood event and exit water quickly
- Use cut soil to "recap" north slope of landfill
- Overlay revetment and path layer to prevent future erosion
- Use cut soil and added material to change bathymetry of water on south wetland, creating more upper and lower tidal wetland mix
- Elevated trolley line base to work as a wave break in the future

Hydrology



Elevated Rail Trail

Revetment Trail

Tidal Wetland

Wave Break

Revetment

Habitats

Birds Migration

Water Activities

Landfill

New Wetland Mix

Landfill

Old Wetland Mix

Artificial Reef

Island Barriers

2080
2050
2020
Current

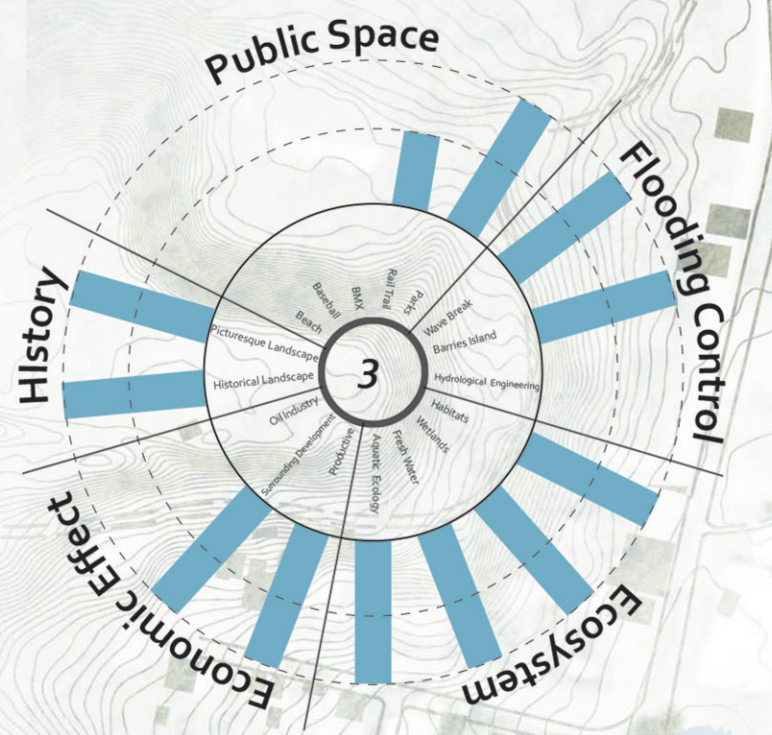
Steel Sheet

Phase II Productive Landscape

2080

Embrace the Open Water

Metrics



- Build new bridge to connect "Kingston Point Island"
- Reprogramming the BMX and Baseball field to new open space for multi-purpose activities.
- Create new layout for both pedestrian and emergency access
- Refine revetment on south slope as waterfront park
- Remediate oil industrial site and convert it to industrial/educational park
- Build broad walk over the islands for fishing and other educational purpose

We lost to Sea Level Rise

We recreate on side

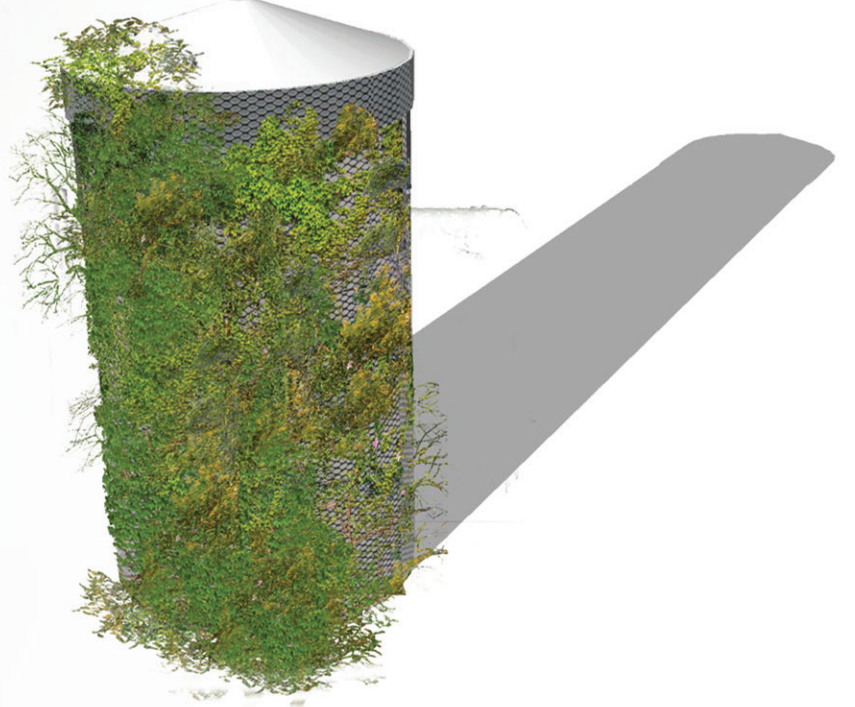
A Sand Beach



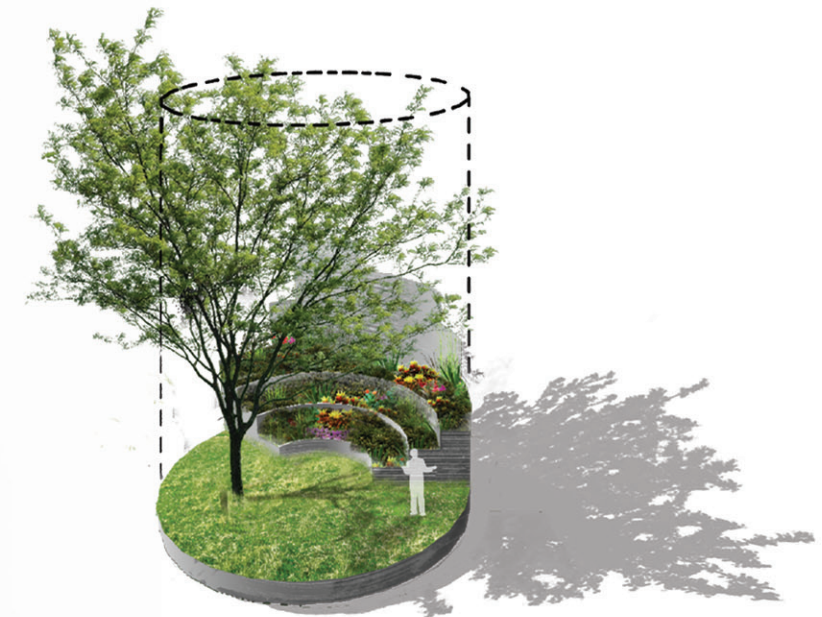
A Swamp Forest



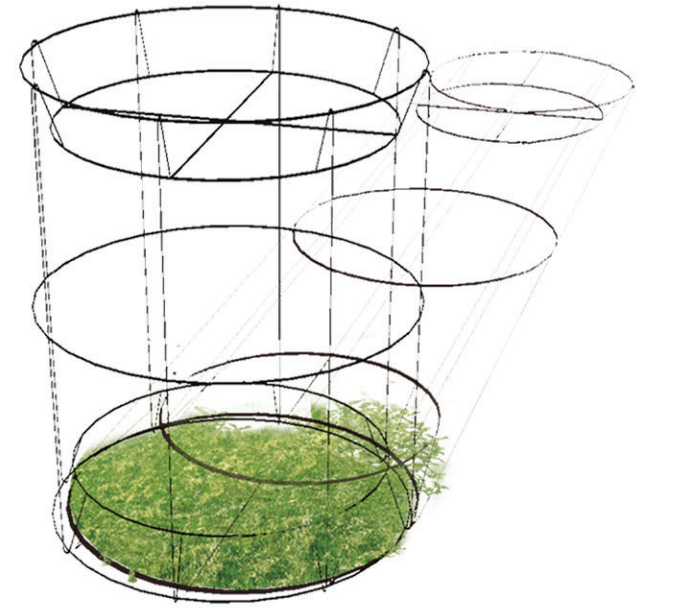
A Oil Industry



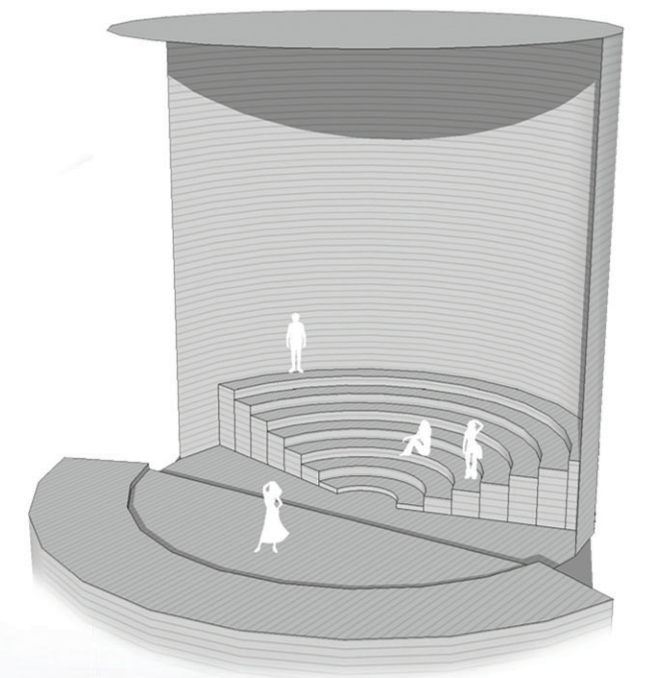
A Meadow



A Piece of History



An Event Space



Fishing



Living Shoreline

Revetment

Wave Break

Industrial Park