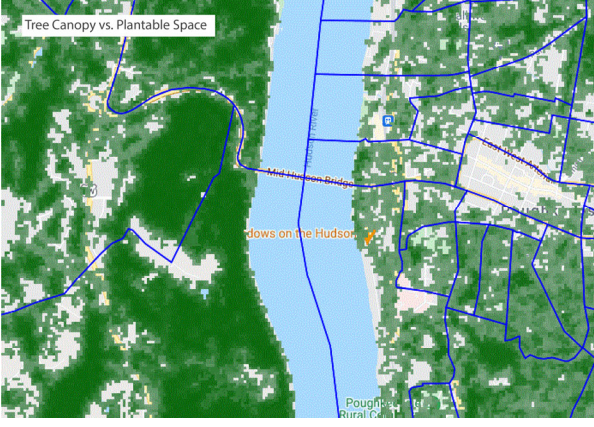
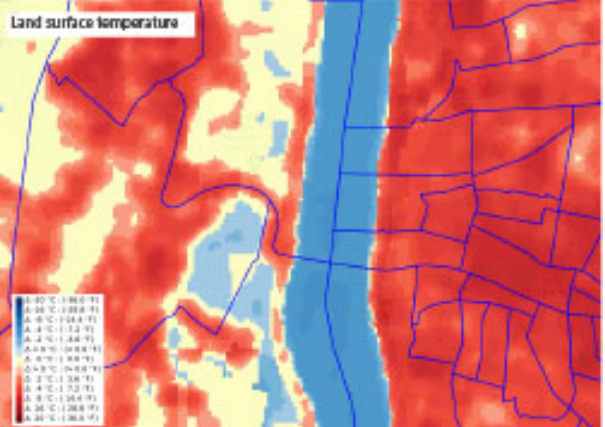
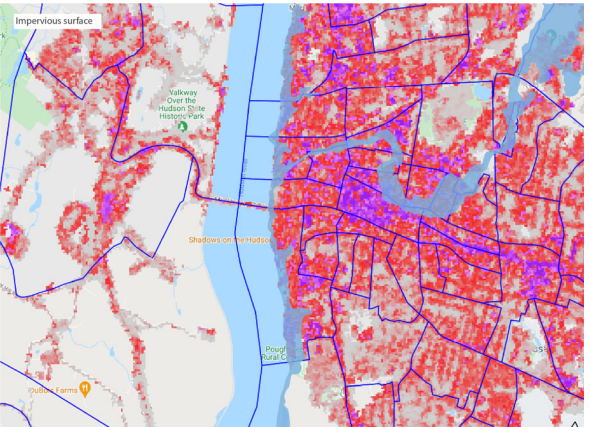
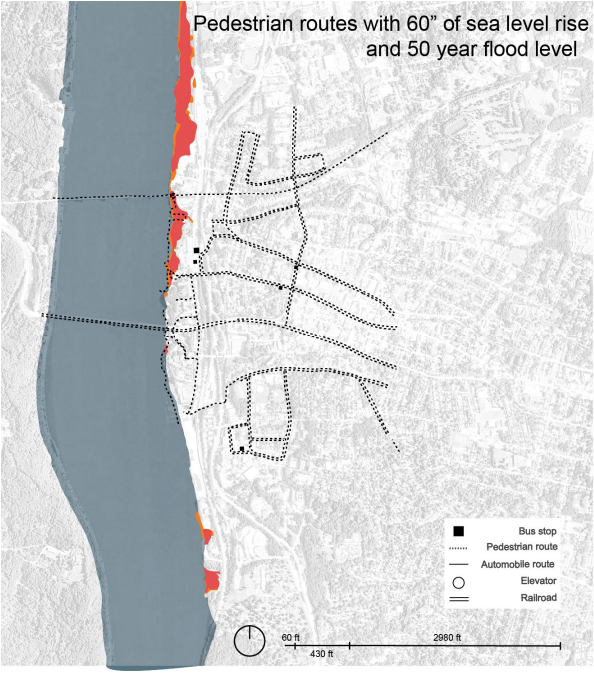
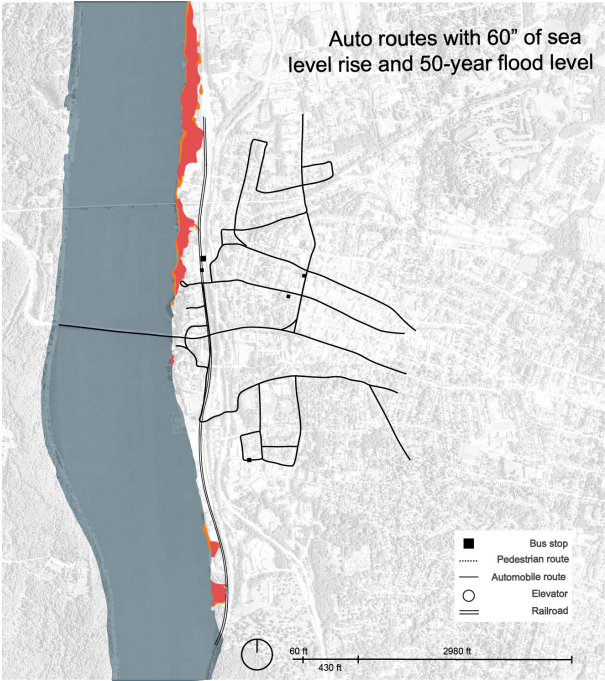


## Permeable Connection

My goal for this project is to open up connections to and between waterfront parcels in order to open up pedestrian mobility in Poughkeepsie in a way that also increases flood permeability and capacity.

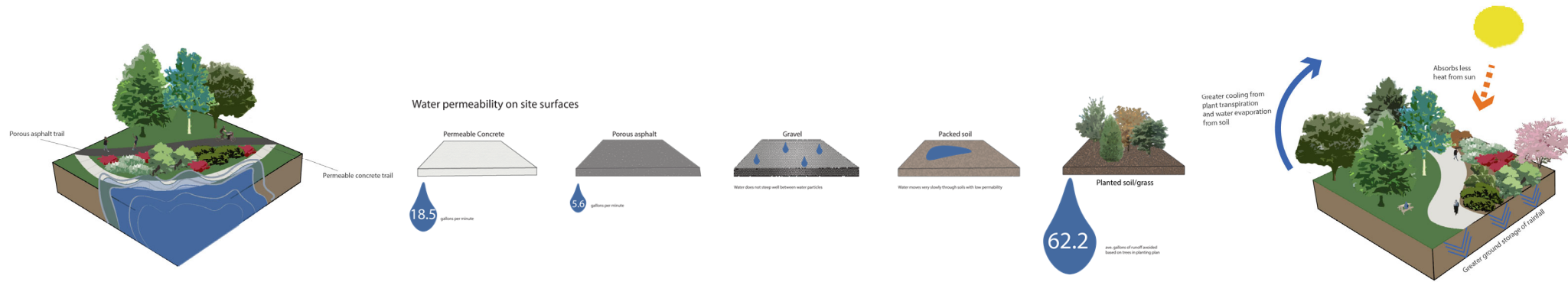








# Community Feedback



Imagined Connections



Entrance to Delaval site from Kaal Rock promenade



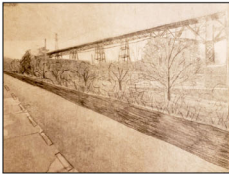
Delaval site



Rinaldi Ave. entrance to Delaval site



Dutchess Ave.



Rowing center parking lot

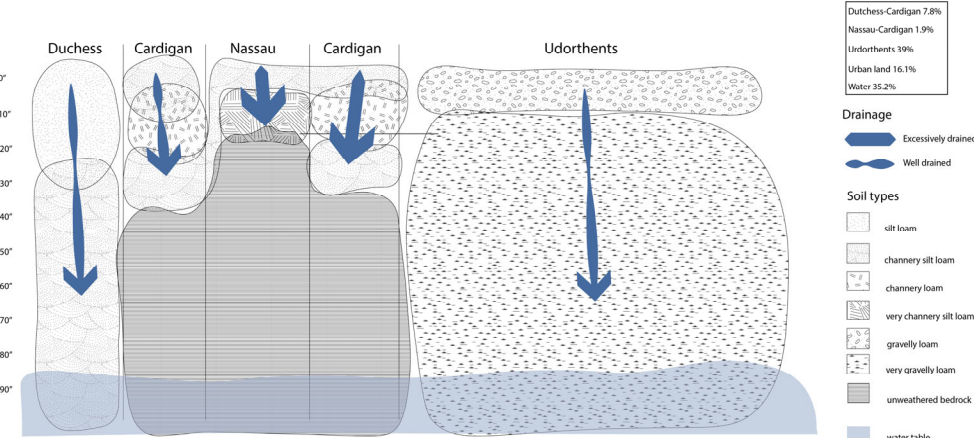


Waryas Park Skate Park

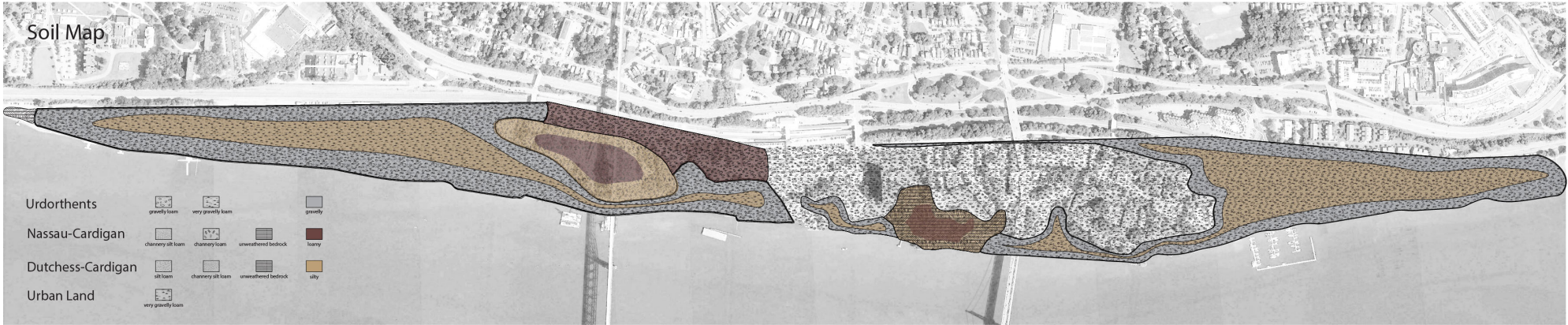
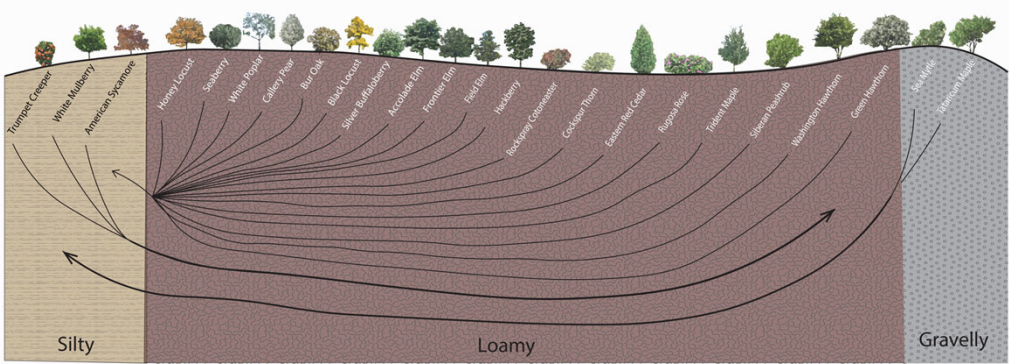


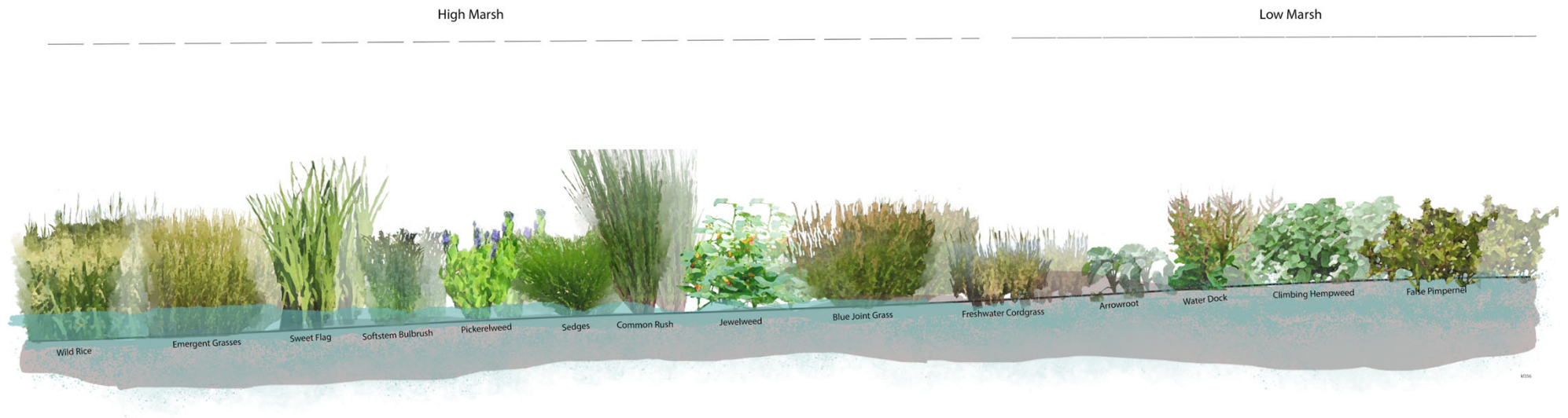


Hard surface and soil permeability on the Poughkeepsie Waterfront



Planting Palette





## Material and Plant Palette



permeable concrete



porous asphalt



native grass blend



increased native tree canopy



river marsh



rip rap



