

**A LIVING SHORELINE FOR ALL**

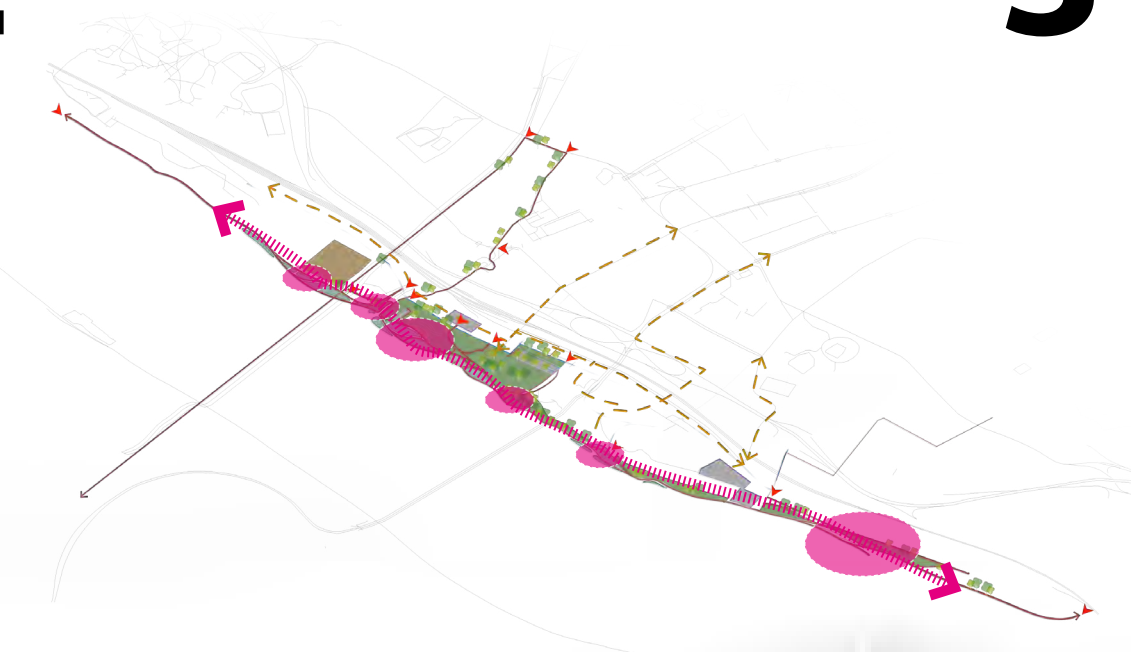
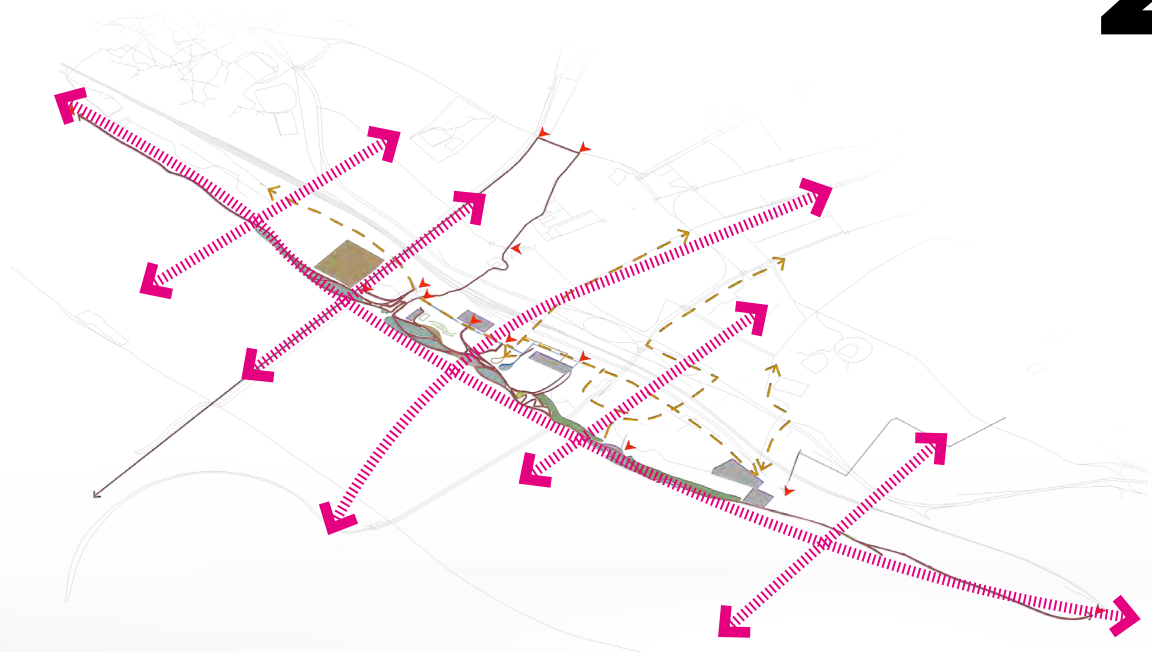
**1** RESOLVING BOUNDARIES

+

**2** REUNION HUMAN & NATURE

=

**3** RECIPROCATE HUMAN & NATURE



**WATER RESILIENCY**

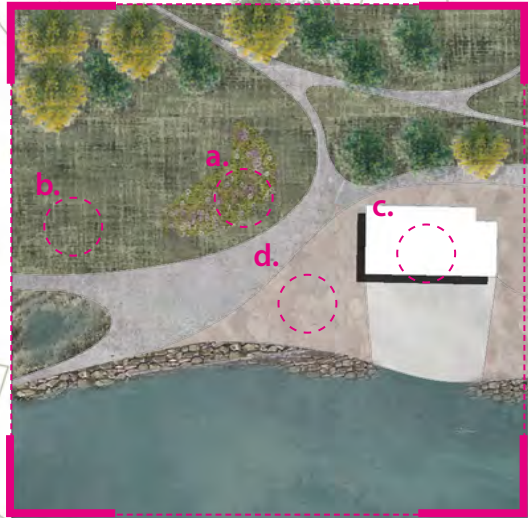
**SOCIAL RESILIENCY**



MASTER PLAN OF POUGHKEEPSIE WATERFRONT



**ECO-cityLAB.1**  
**FALL KILL EDUCATION LAB**  
a. Education Station  
b. History Education Stone Wall  
c. Wetland adaption lab



**ECO-cityLAB.2**  
**LIVING SHORELINE LAB**  
a. Storm water management lab  
b. Human activity lab  
c. Kayak storage  
d. Permeable concrete slab



**ECO-cityLAB.3**  
**CARBON LAB**  
a. Carbon sequestration lab  
b. Viewing Point  
c. Kaal Rock Path  
d. Elevated broadwalk



**ECO-cityLAB.4**  
**URBAN LAB**  
a. Pyto remediation lab  
b. Living bulkhead  
c. Open space for commercial



**ECO-cityLAB.1**  
**FALL KILL LAB**



**ECO-cityLAB.2**  
**LIVING SHORELINE LAB**



**ECO-cityLAB.3**  
**CARBON LAB**



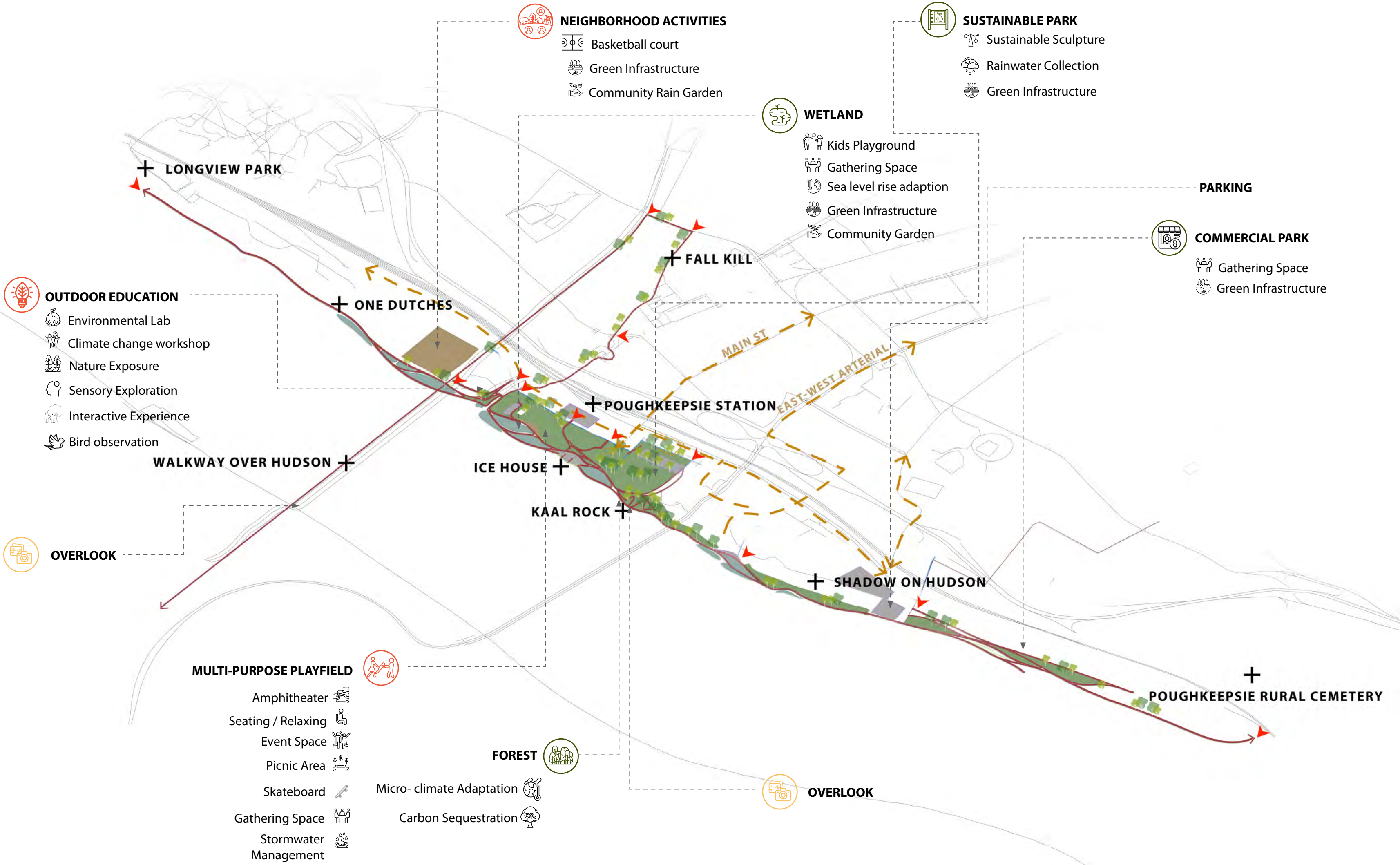
**ECO-cityLAB.4**  
**URBAN LAB**



0 500 1000 2000 ft



LIVING SHORELINE STRATEGY PROGRAMMING

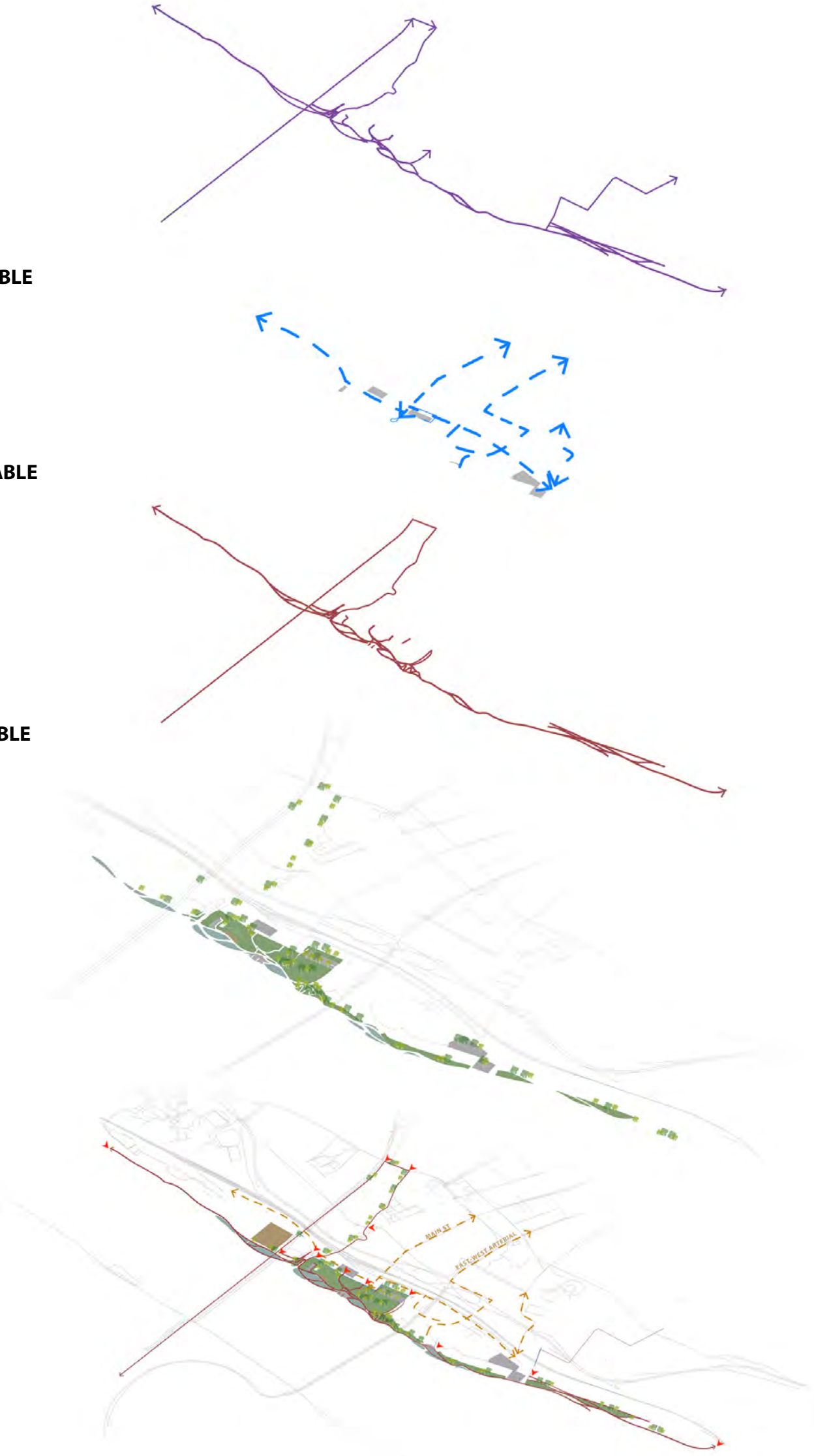


LIVING SHORELINE STRATEGY OVERLAY  
BIKABLE

PARKABLE

WALKABLE

VIEWABLE

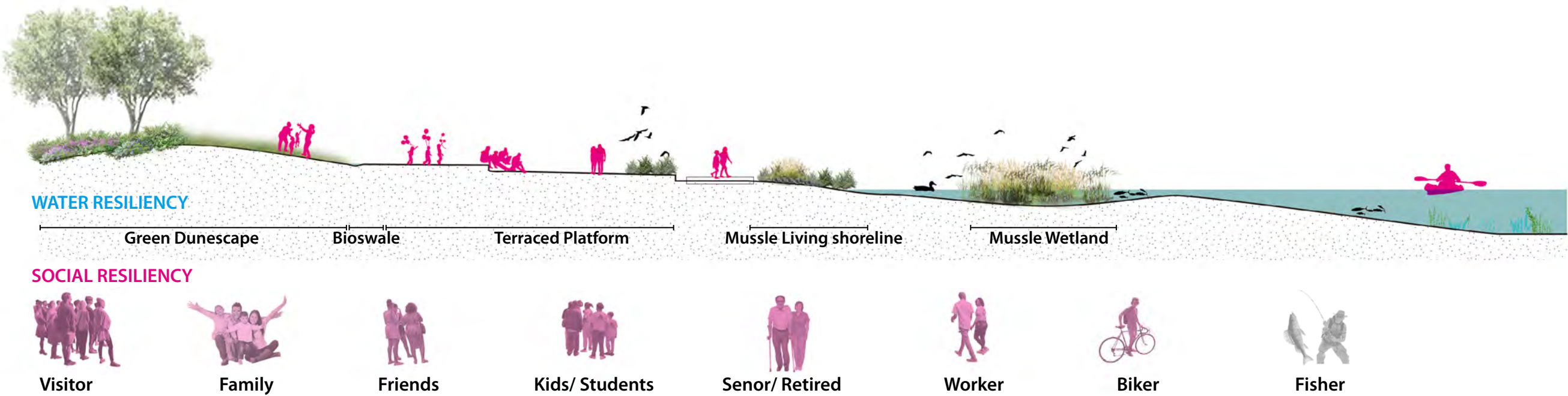




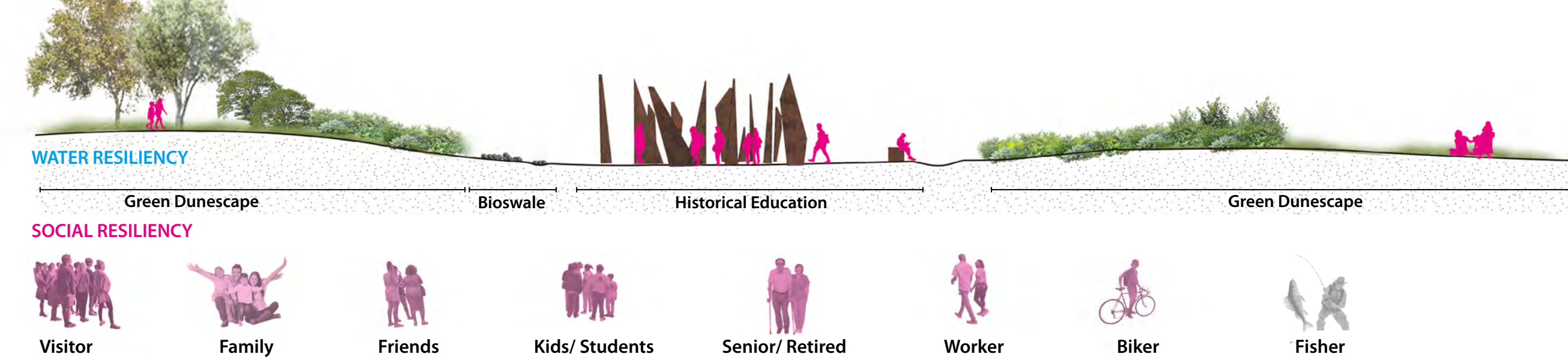
TYPE 1 *ECOLOGICAL cityLAB* WETLAND IN WAYRAS PARK



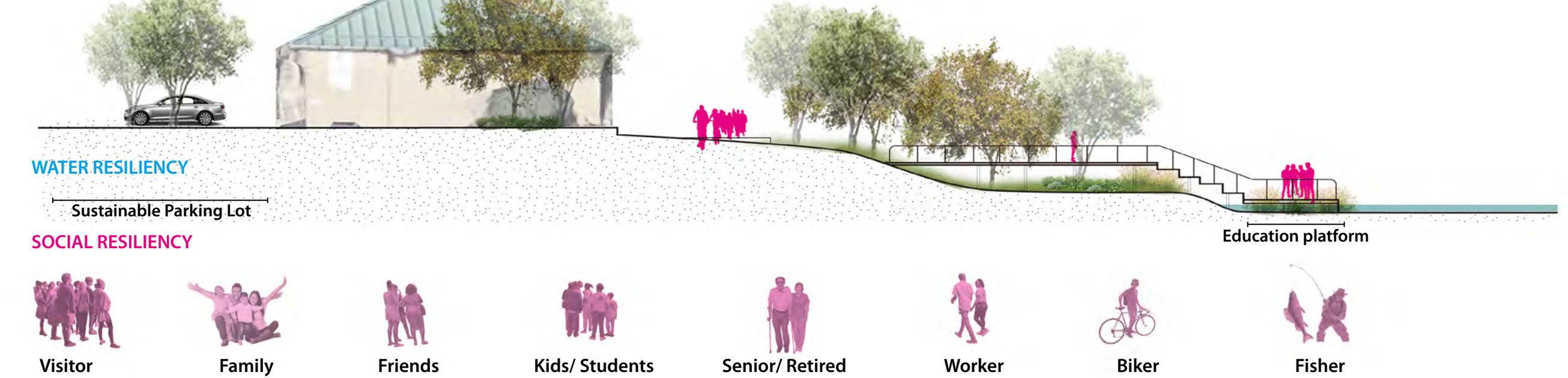
SECTION A-A' Mussle living shoreline  
Using mussle as a meida combine with marshes to create a natural based shoreline and become the ecological study area for students and visitors.



SECTION B-B' Historical education area  
Using industrial material to create a educational area for people to learn pouhkeepsie history and combine with green dunescape to manage stormwater or adapt the climate change

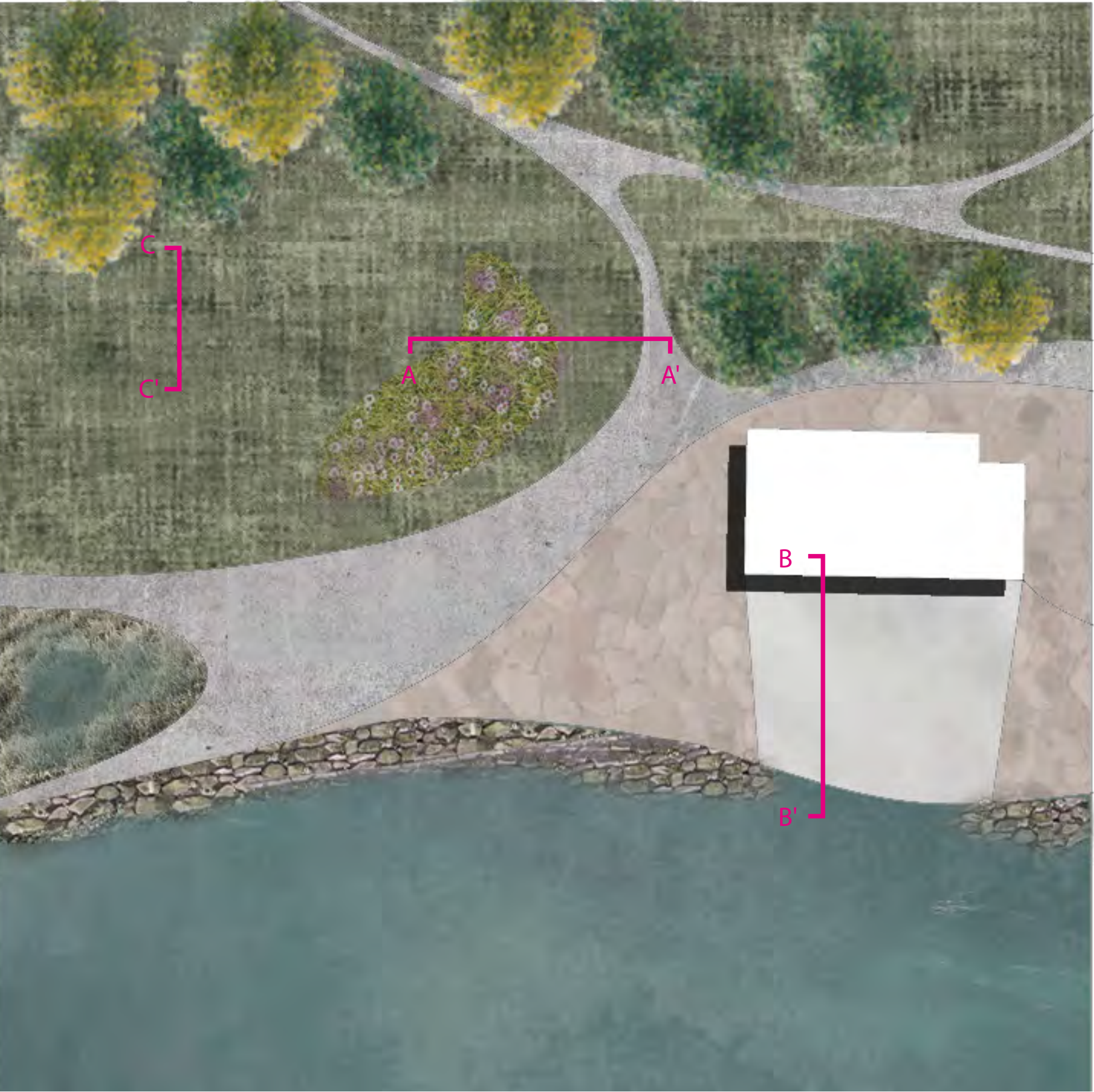


SECTION C-C' Environmental and civic education spaces  
Fall kill waterfront is the important inlet, using education platform combine with children's museum as a weekly activity for civic to learn water and climate.

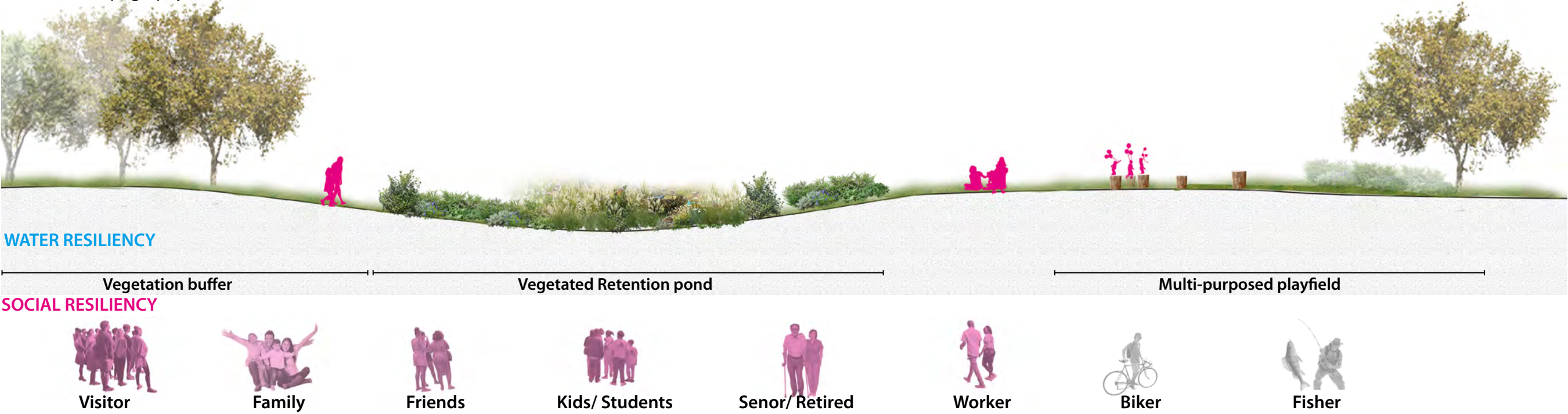




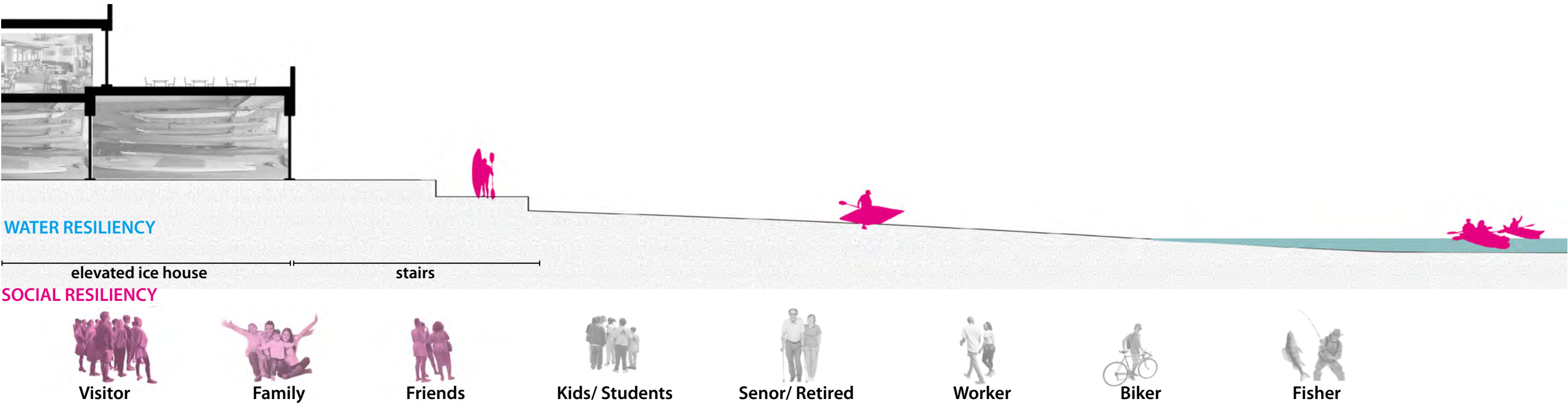
TYPE 2 *ECOLOGICAL cityLAB* LIVING SHORELINE LAB



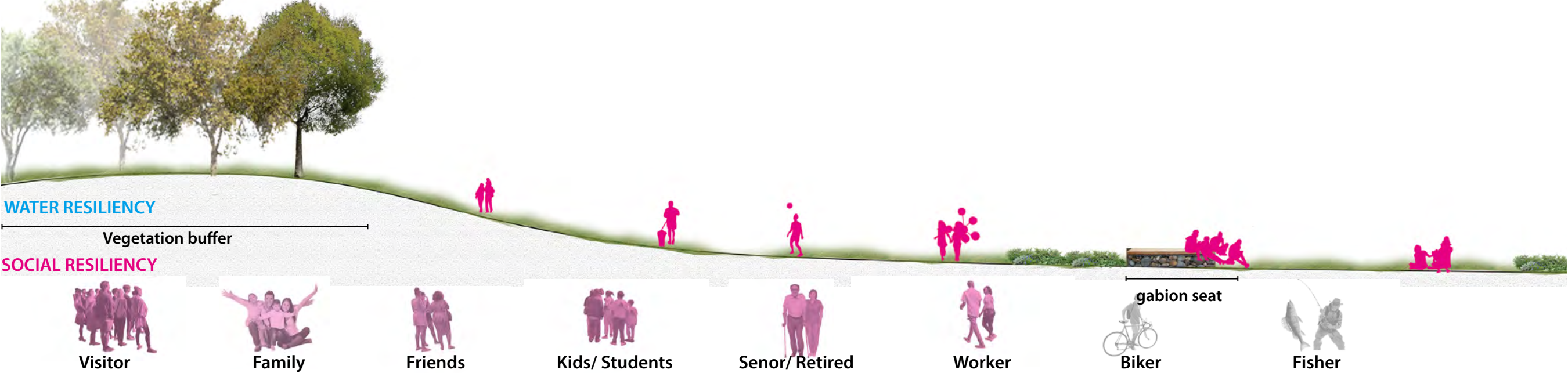
SECTION A-A' Multi-purposed lawn  
Create micropotography to solve stormwater runoff and use flora to create ornamental value



SECTION B-B' Elevated ice house  
Elevated Ice house will change to a kayak restaurant and a kayak storage and dock.

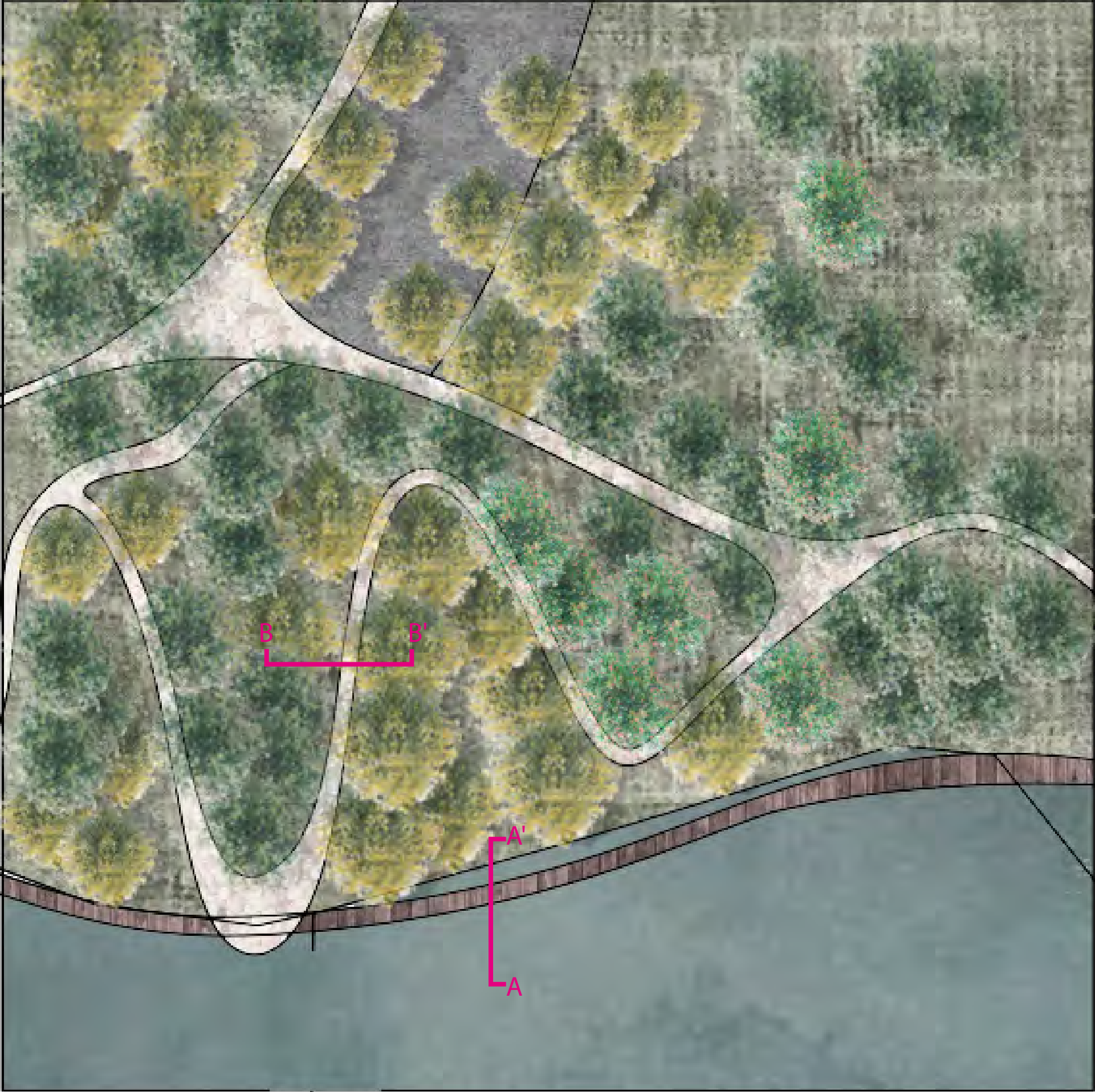


SECTION C-C' Multi-purposed lawn  
Using gabion seats with planters to provide a relaxing place for people and the gabion will be collected from original shoreline.





TYPE 2 ECOLOGICAL cityLAB CARBON LAB IN KAAL ROCK

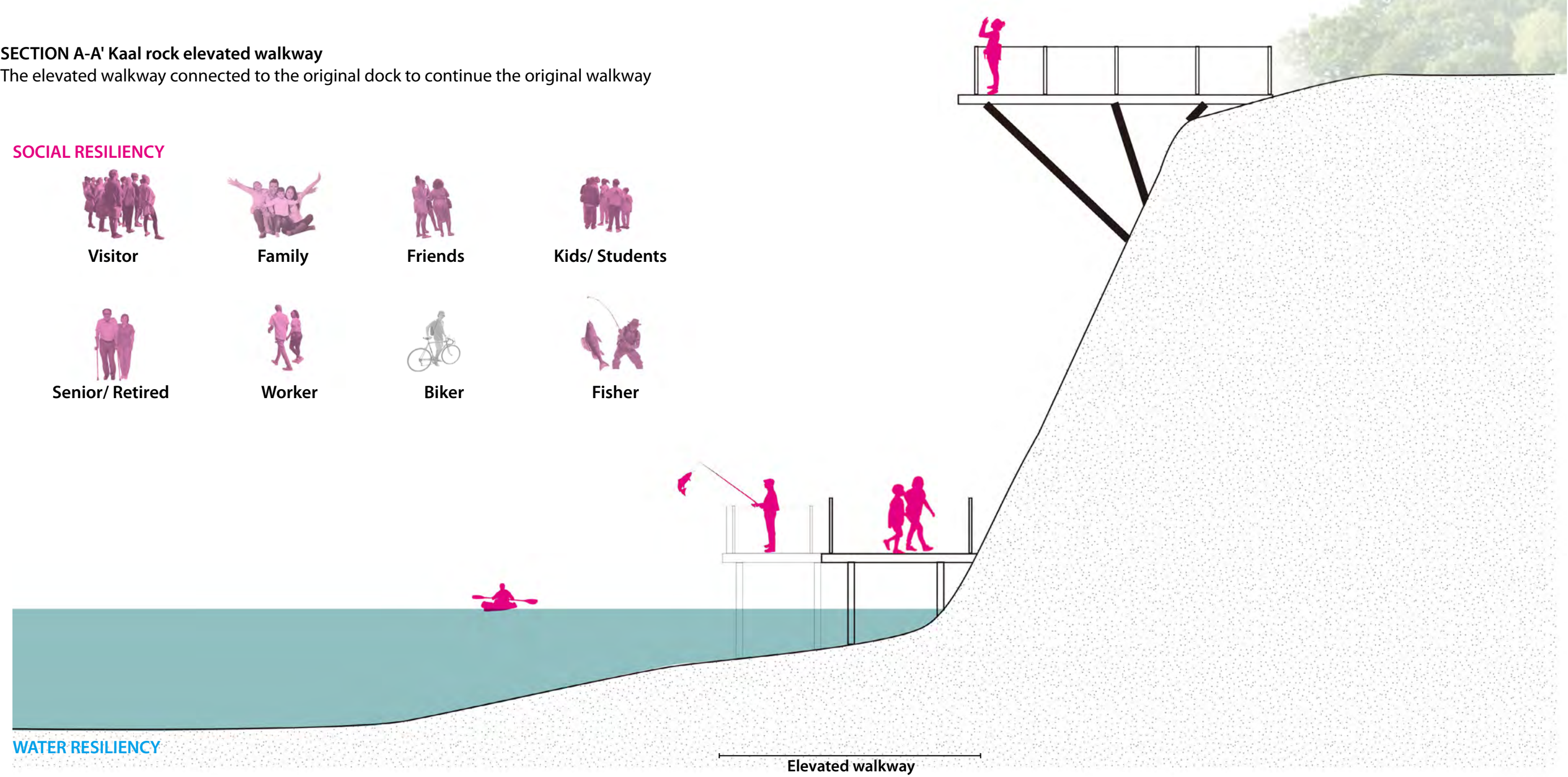


SECTION A-A' Kaal rock elevated walkway  
The elevated walkway connected to the original dock to continue the original walkway

SOCIAL RESILIENCY

- Visitor
- Family
- Friends
- Kids/ Students
- Senior/ Retired
- Worker
- Biker
- Fisher

WATER RESILIENCY

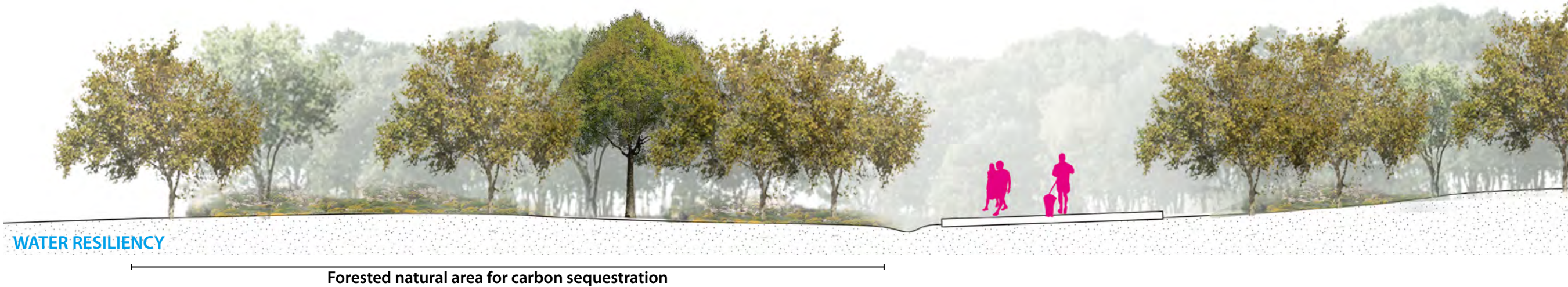


SECTION B-B' Kaal rock Forest trail  
Maintain its original forest feature and grow more Tulip tree and Oat tree for carbon sequestration.

WATER RESILIENCY

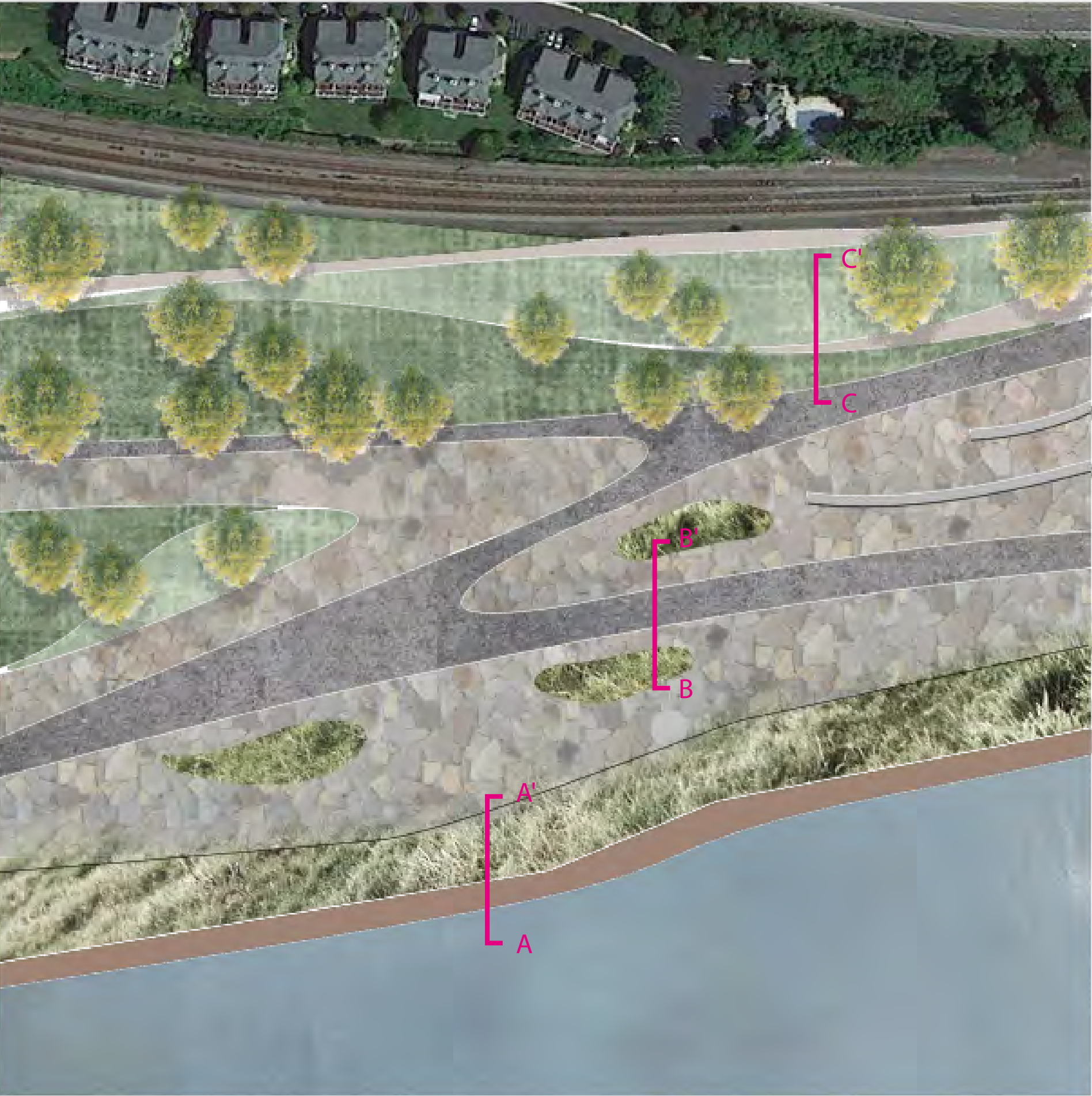
SOCIAL RESILIENCY

- Visitor
- Family
- Friends
- Kids/ Students
- Senior/ Retired
- Worker
- Biker
- Fisher

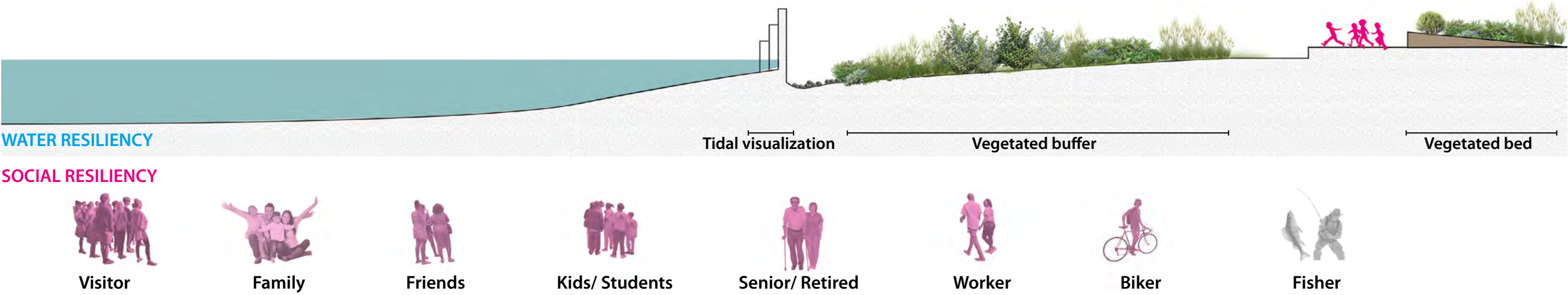




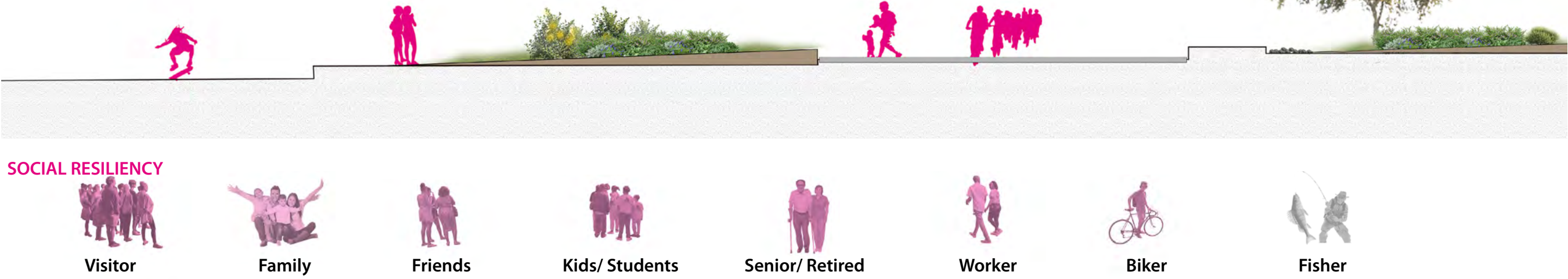
TYPE 4 ECOLOGICAL cityLAB URBAN LAB



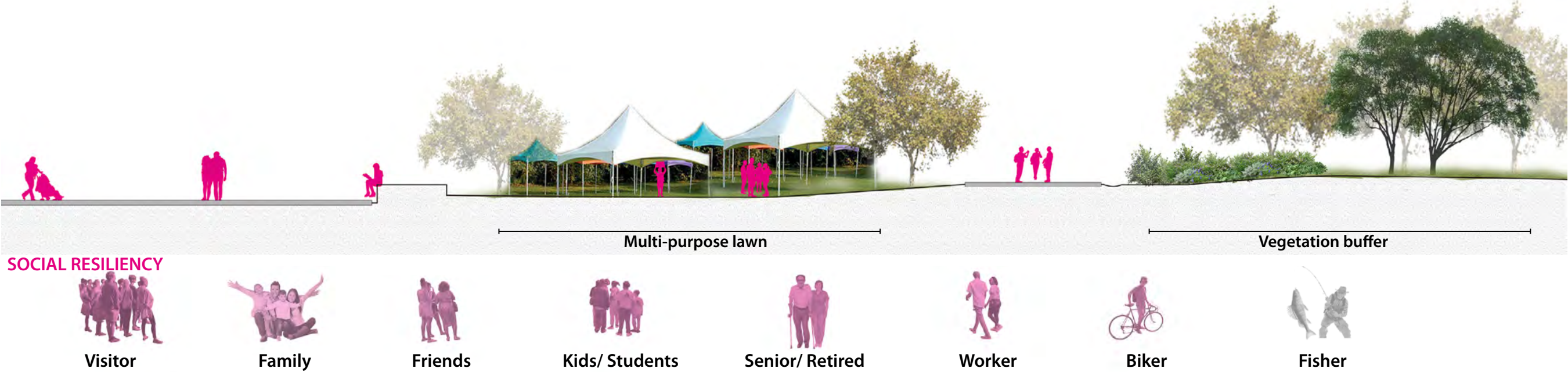
SECTION A-A' Tidal shoreline  
Using gabion seats with planters to provide a relaxing place for people and the gabion will be collected from original shoreline.



SECTION B-B' Elevated Plaza  
Using vegetated basin to create the recreational and visual



SECTION C-C' Multi-purposed lawn  
The lawn can be used as the temporary famers' market and commercial area or gathering area.





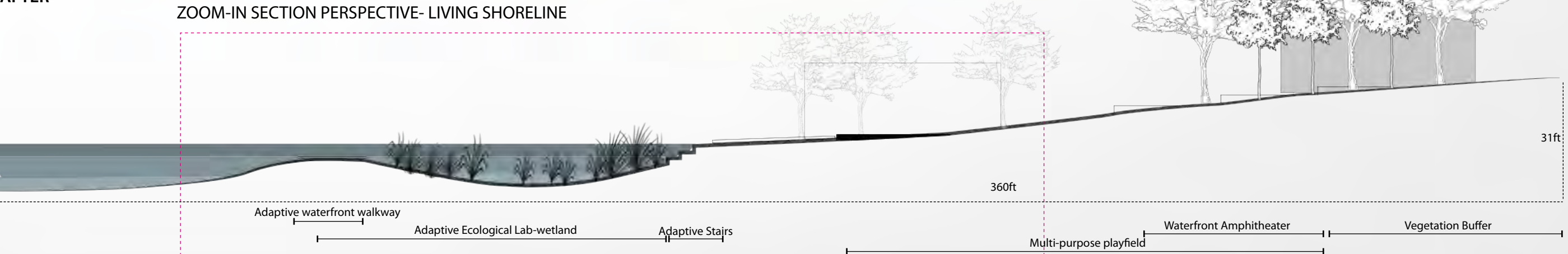
LIVING SHORELINE STRATEGY- TYPE 2 ECOLOGICAL cityLAB LIVING SHORELINE LAB



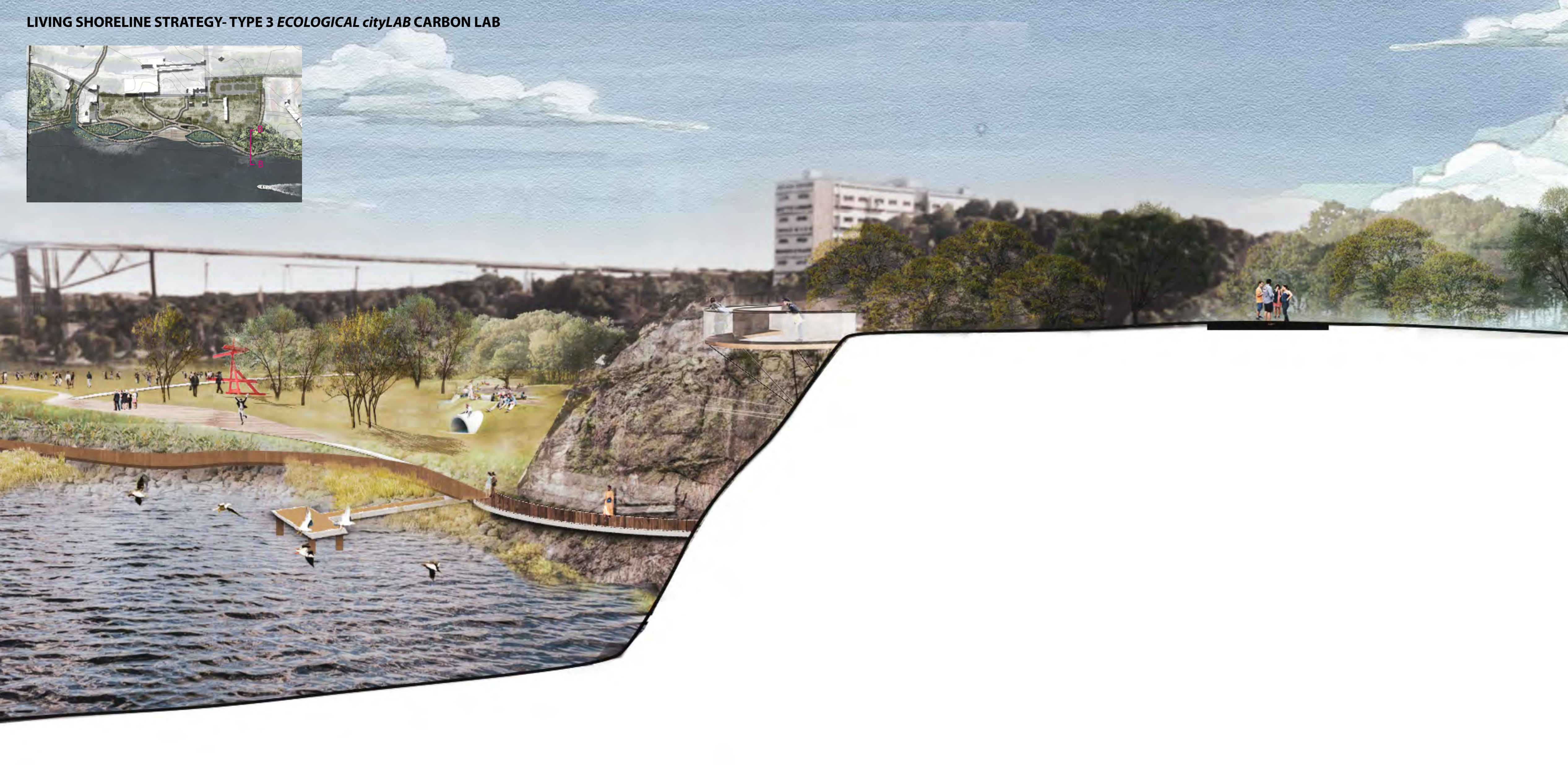
BEFORE



SECTION A-A  
AFTER









EDUCATION PLATFORM AROUND FALL KILL MOUTH





**HISTORICAL EDUCATION AROUND UPPER LANDING PARK**





DELLAVAL URBAN PARK

