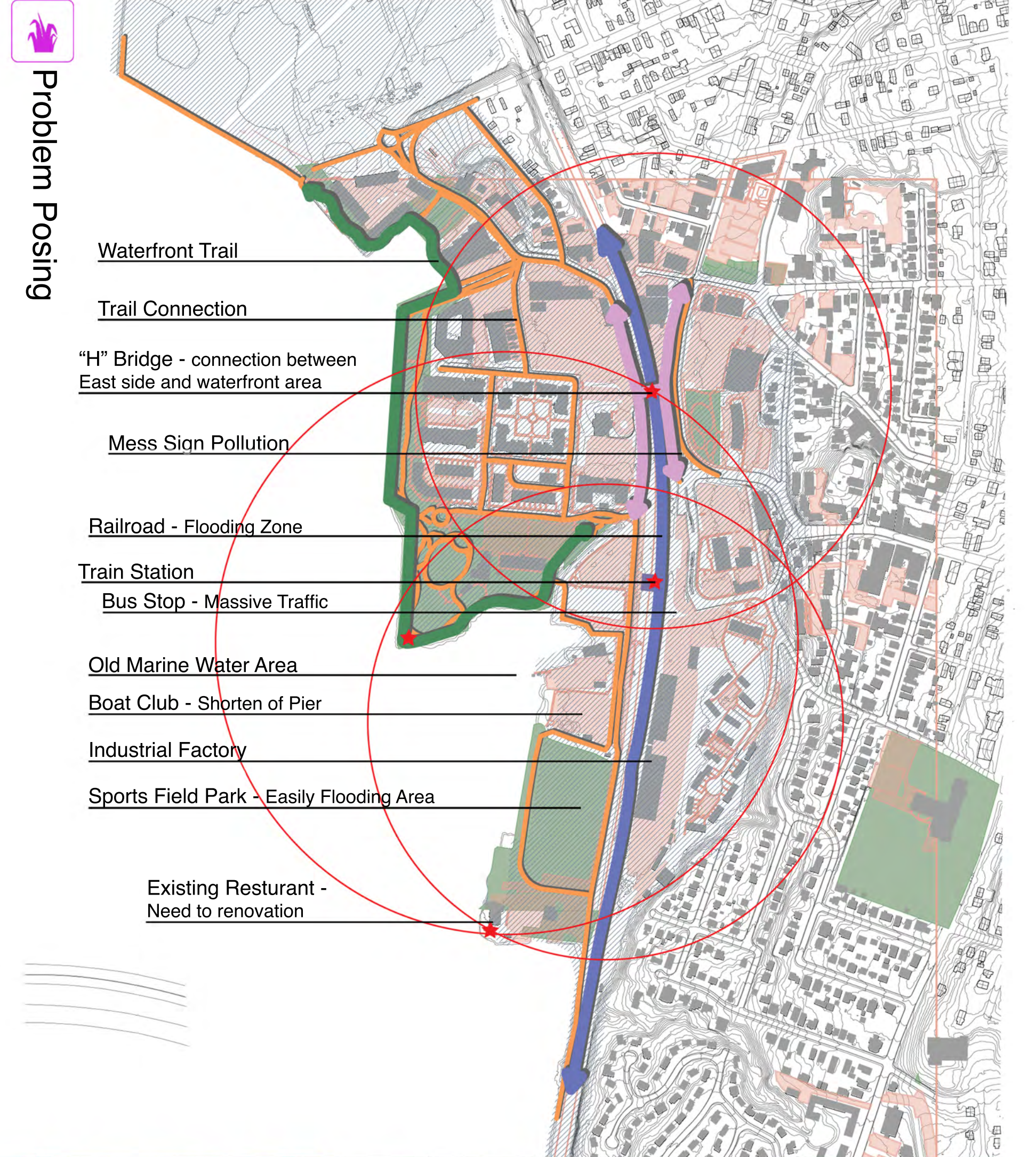
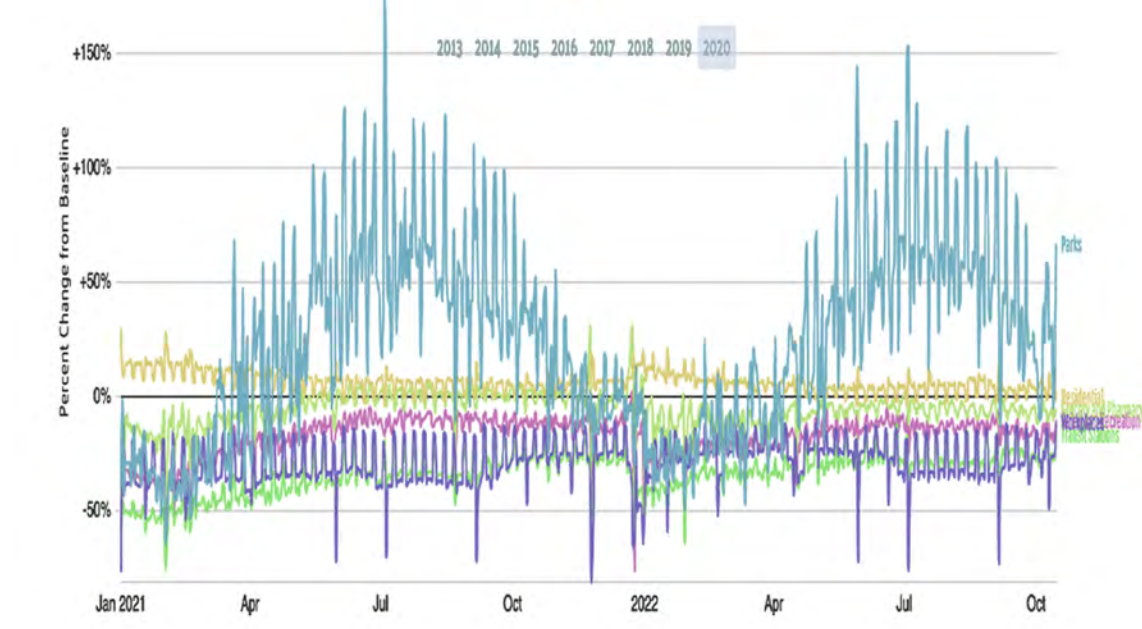
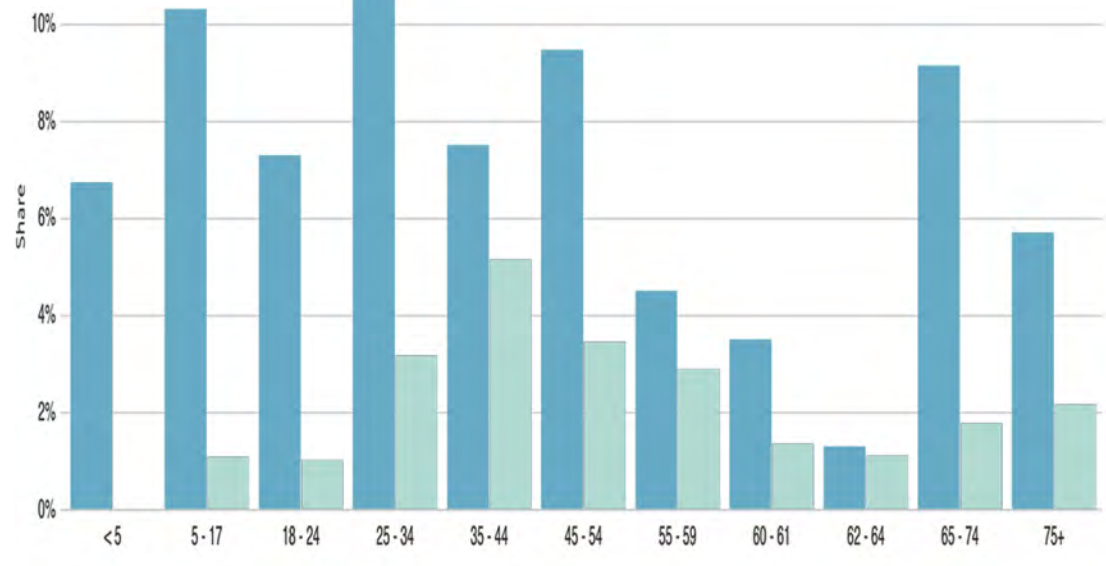
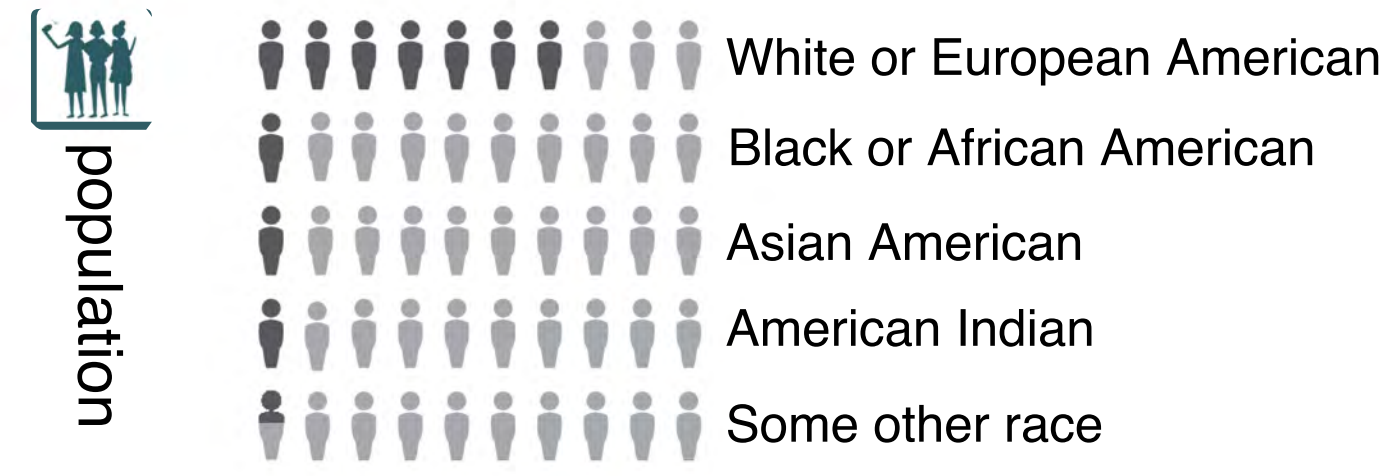
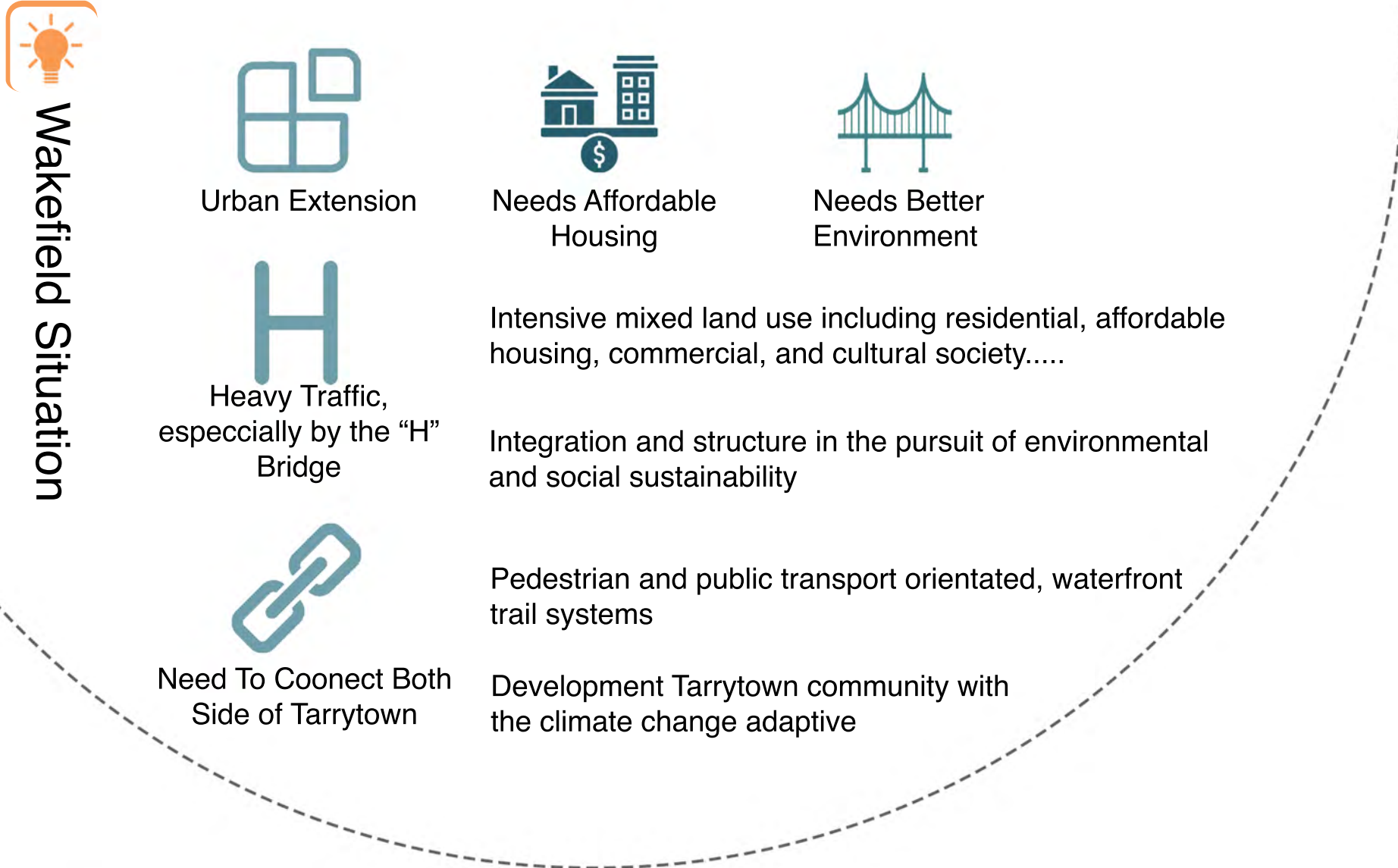
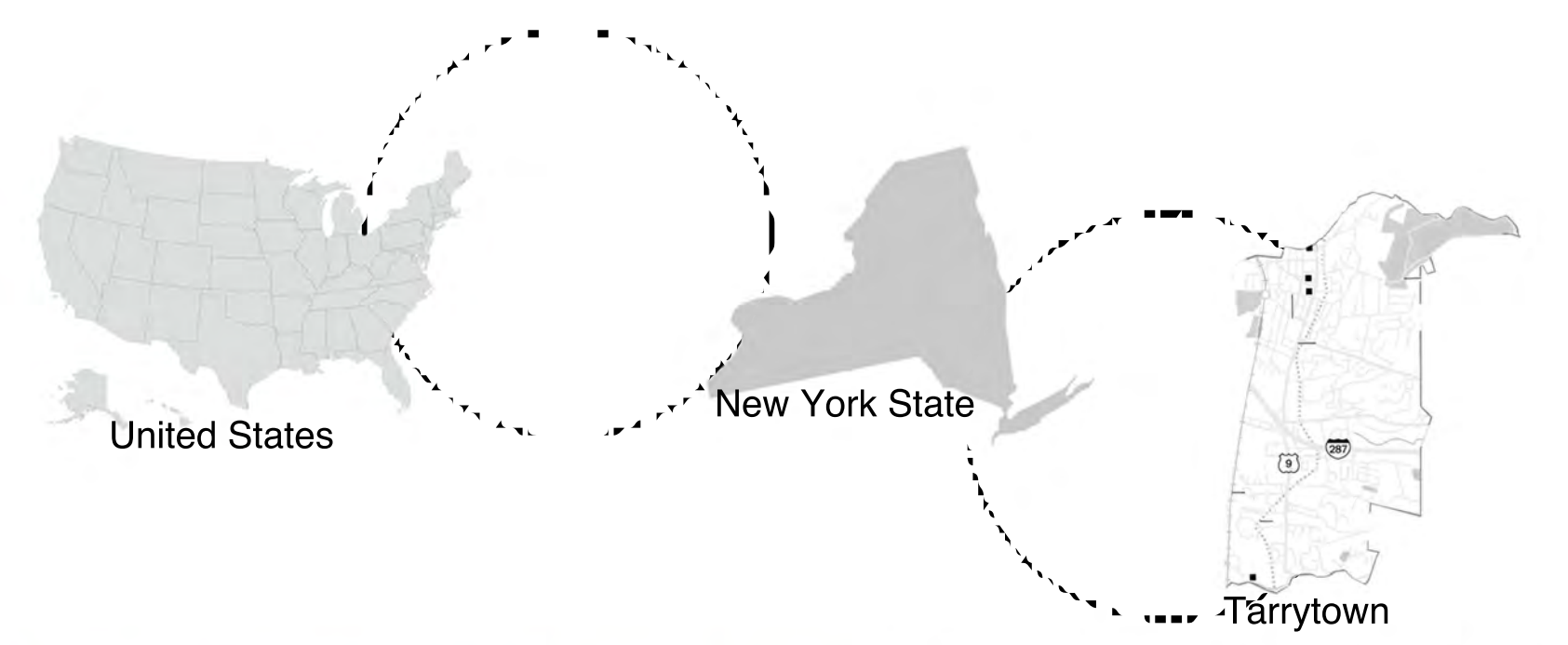


# TARRYRELINK

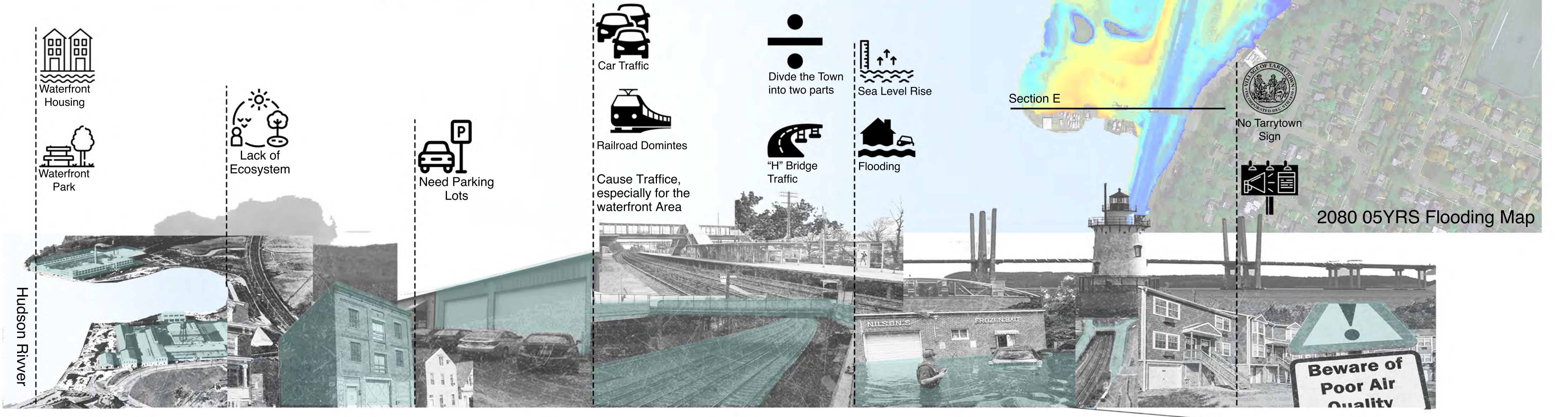
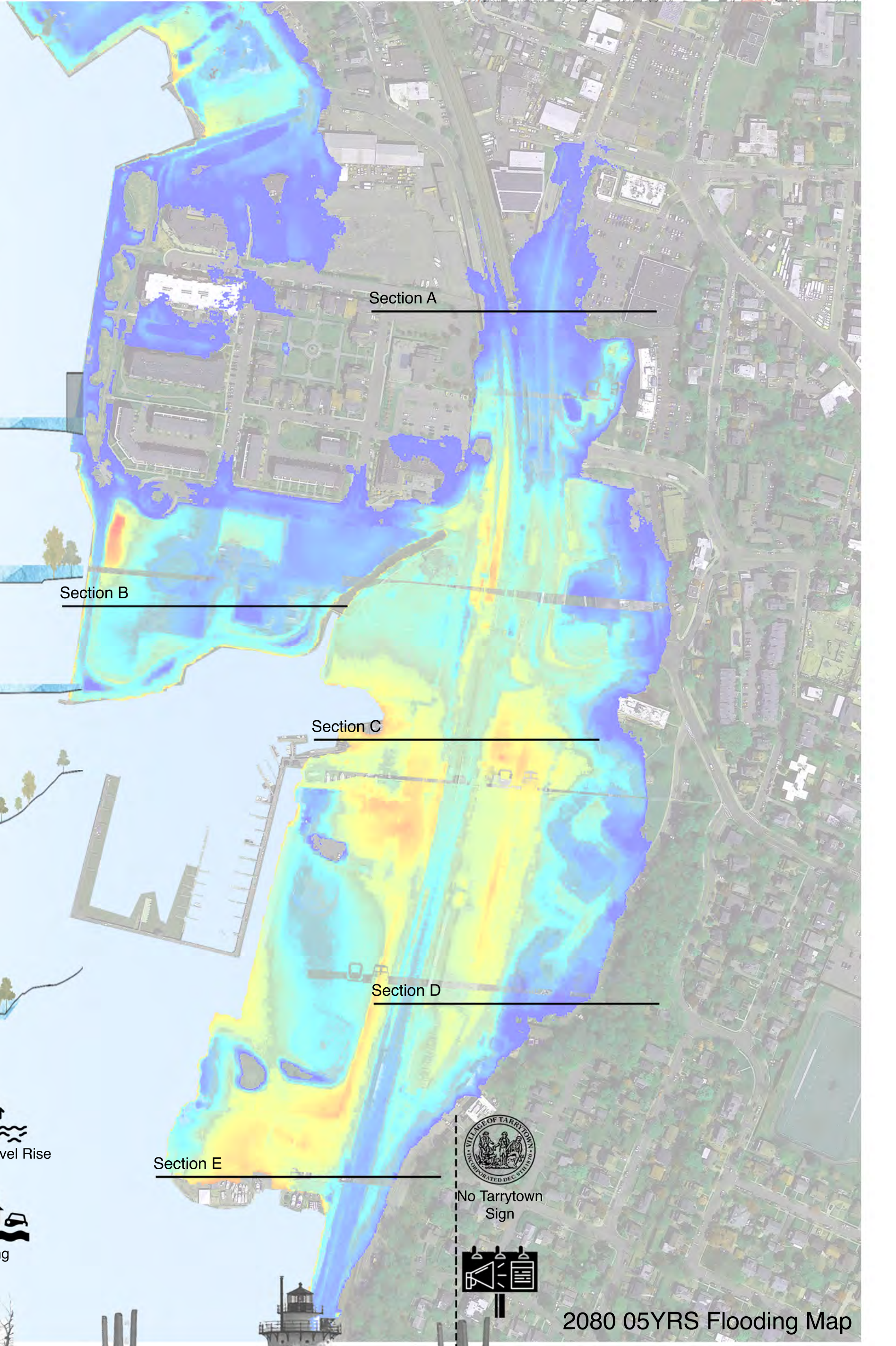
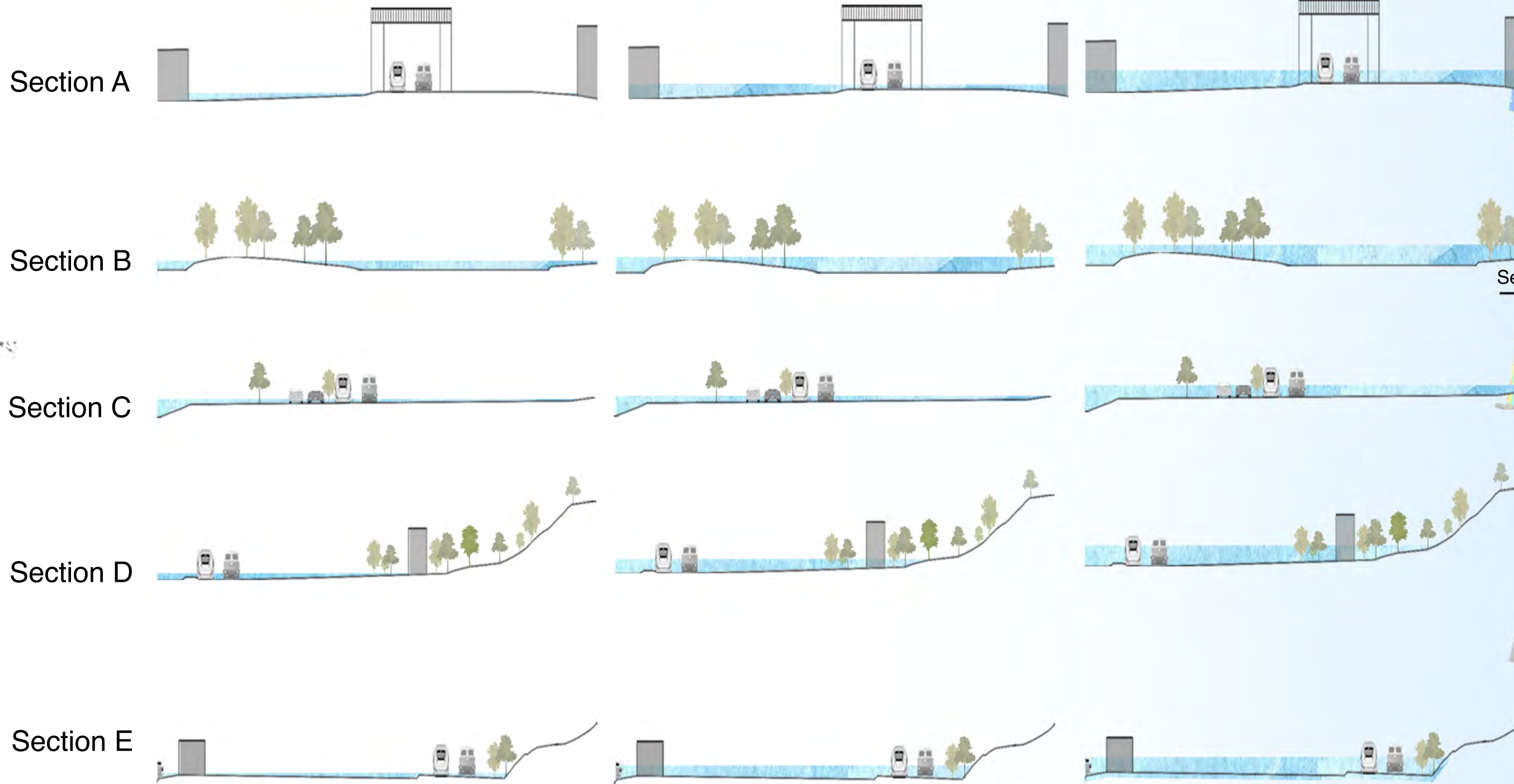
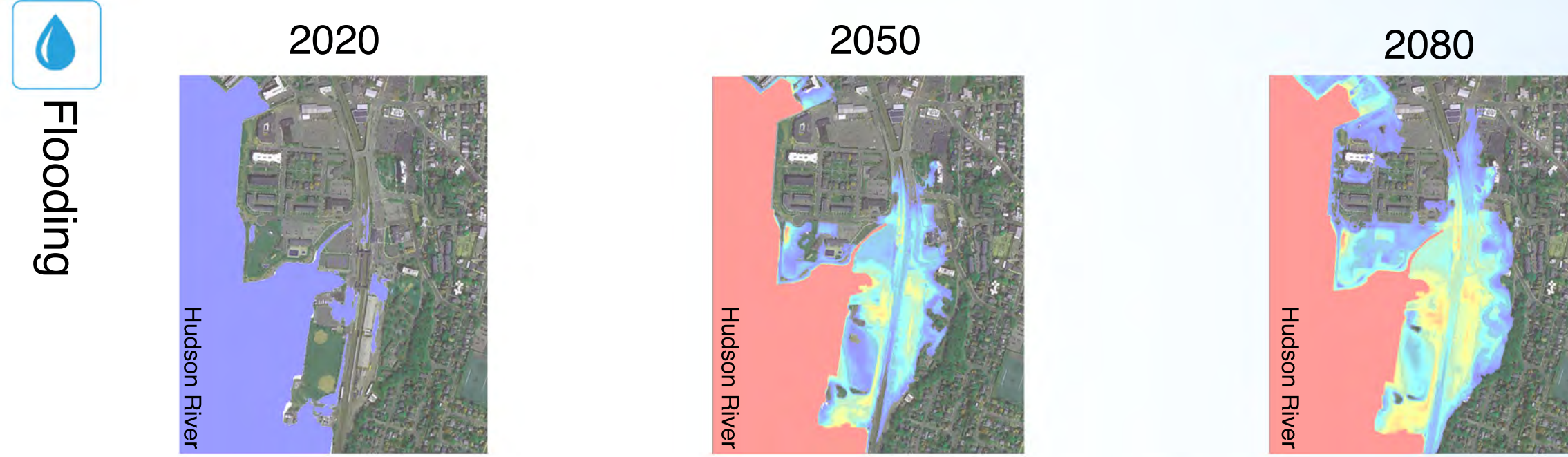
Climate Change Studio

Urban Regeneration and Transportation Reconnection

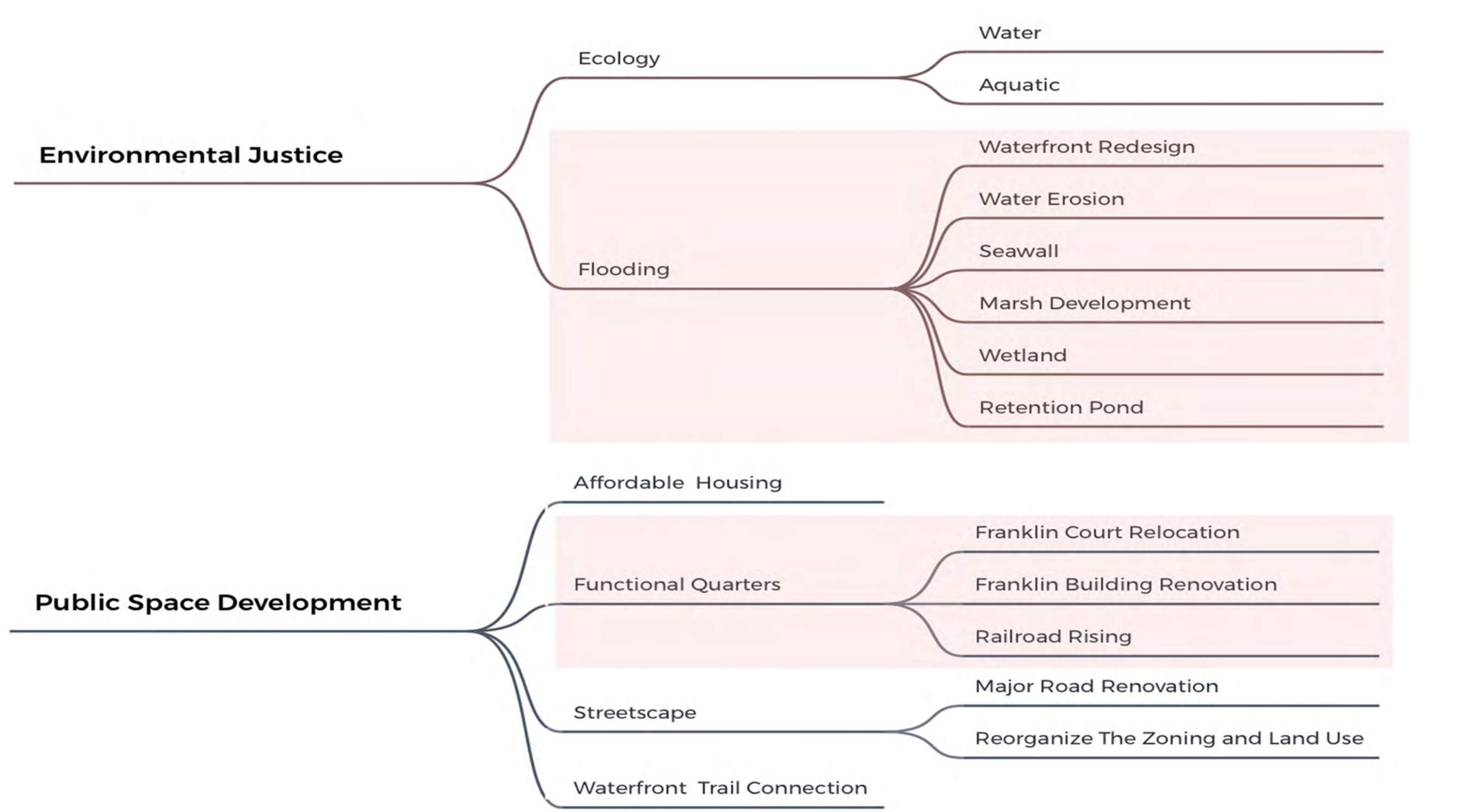
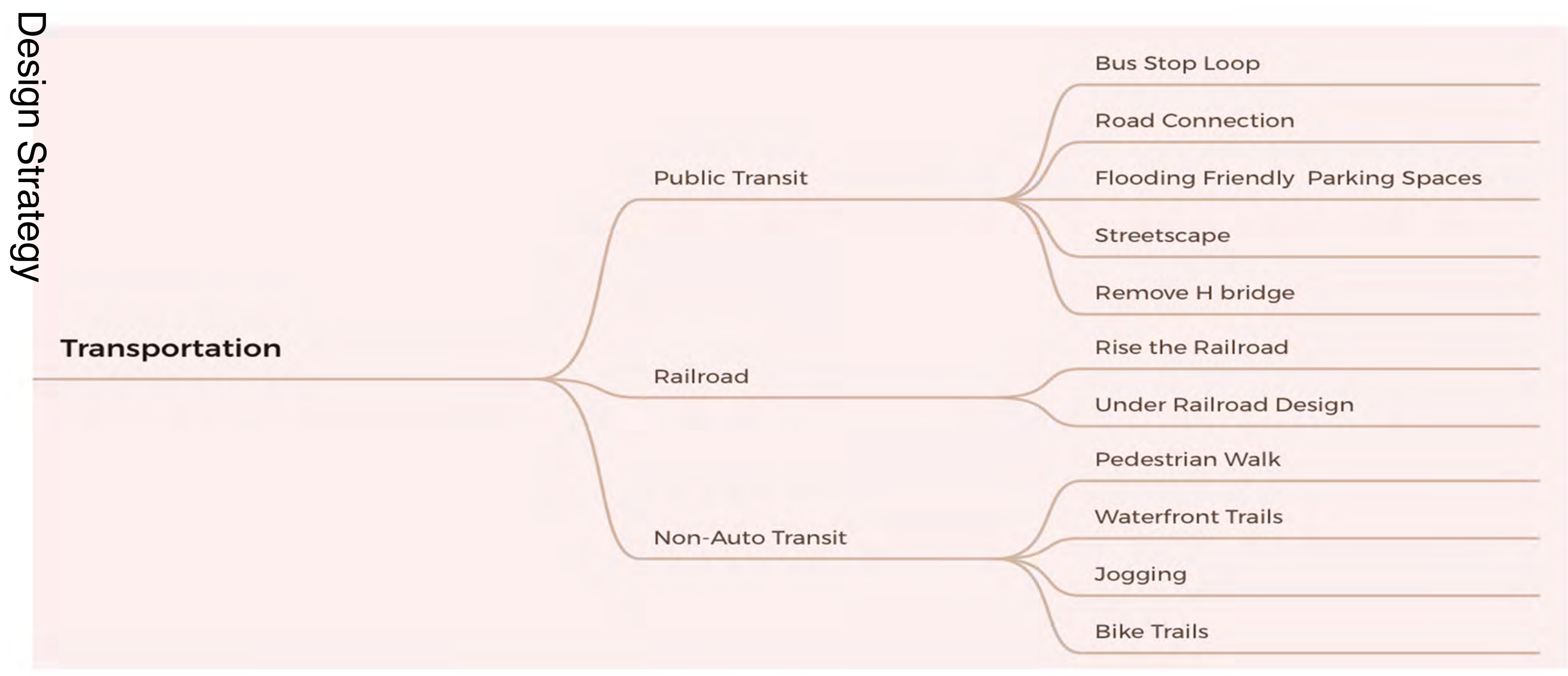
LA 7010 Studio Xiaomeng Cai



Historical Flooding in Tarrytown



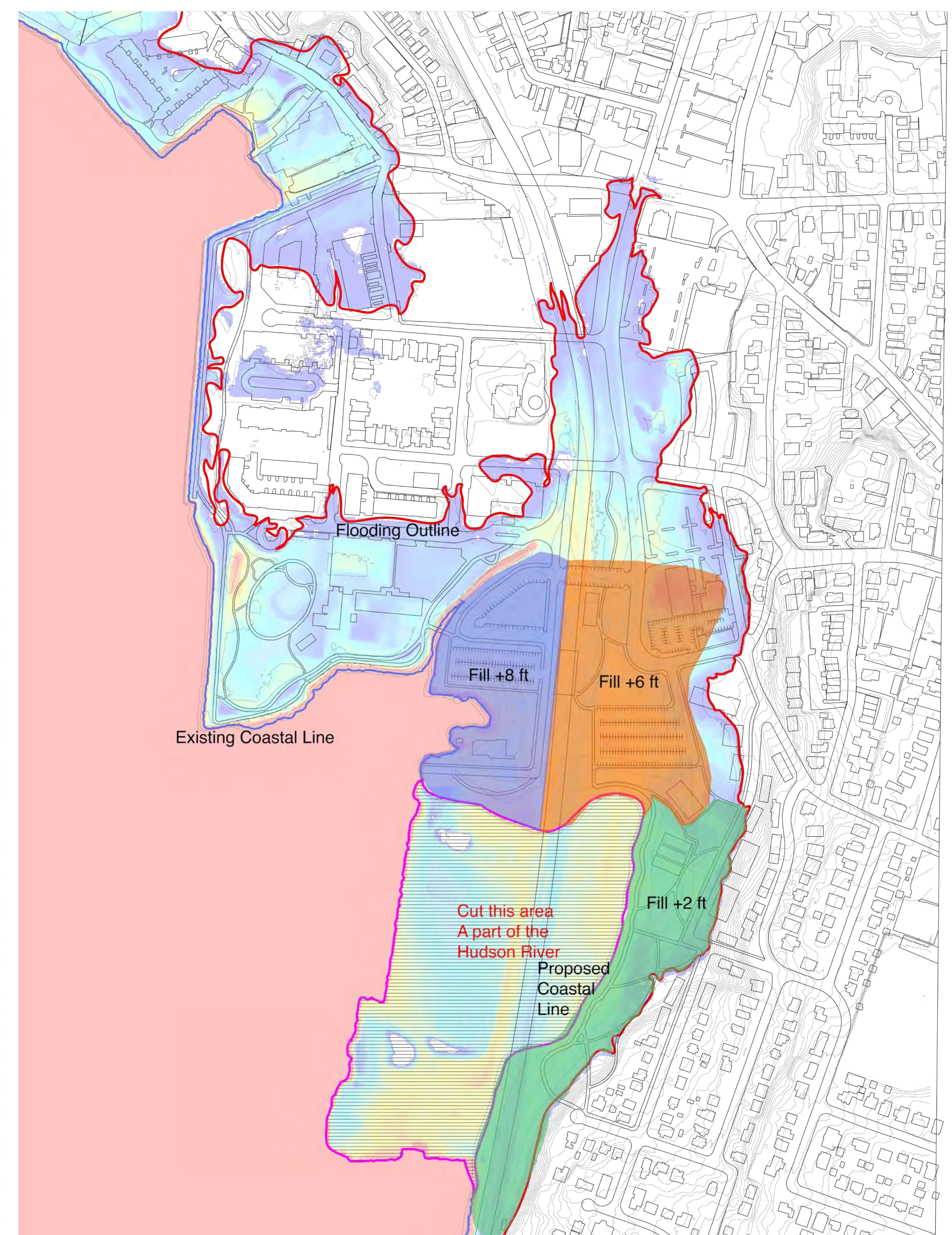
1 Waterfront Area    2 Housing    3 Industrial Factory    4 Railroad System    5 Flooding    6 "H" Bridge    7 Sign Pollution



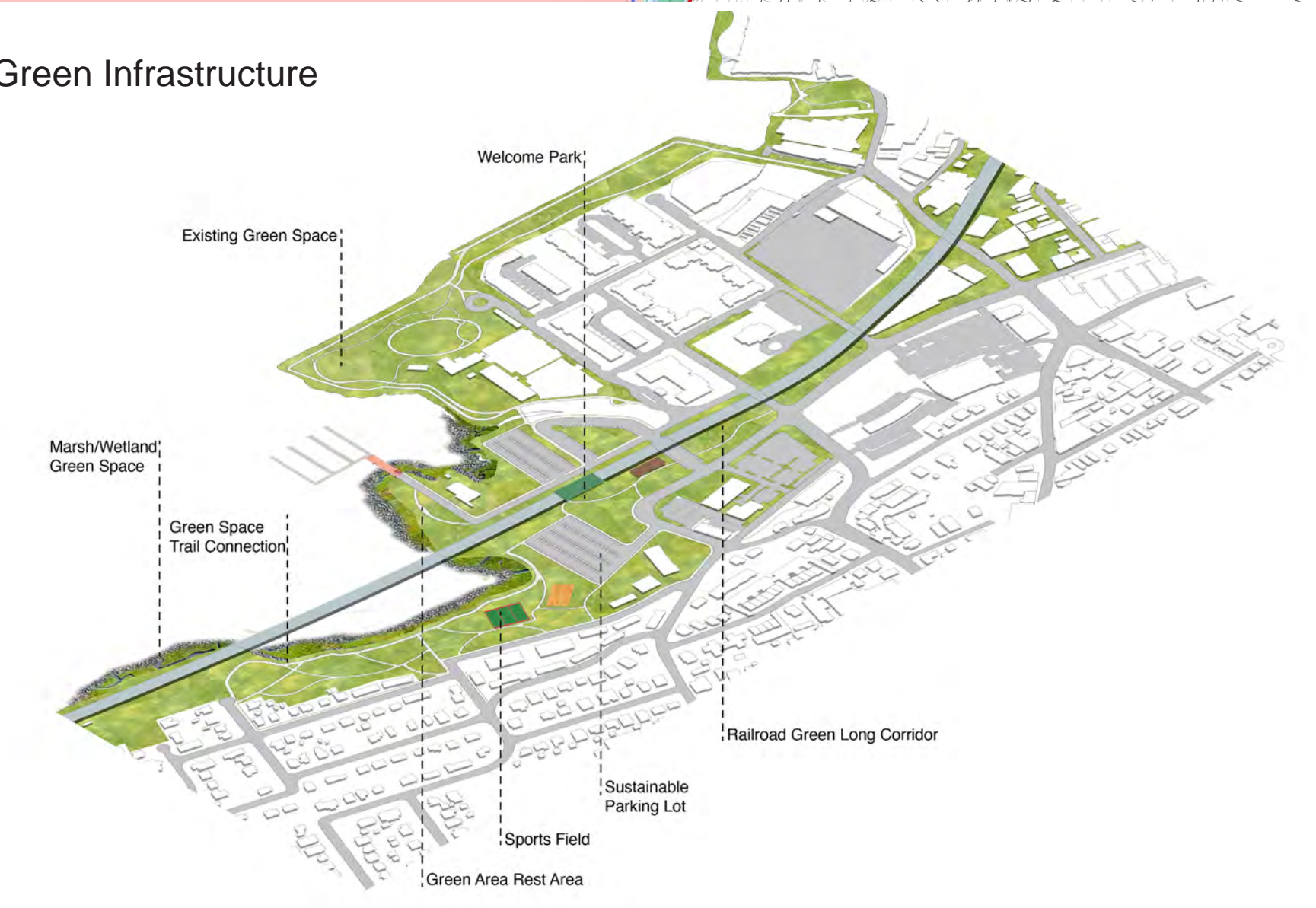
# Master Plan



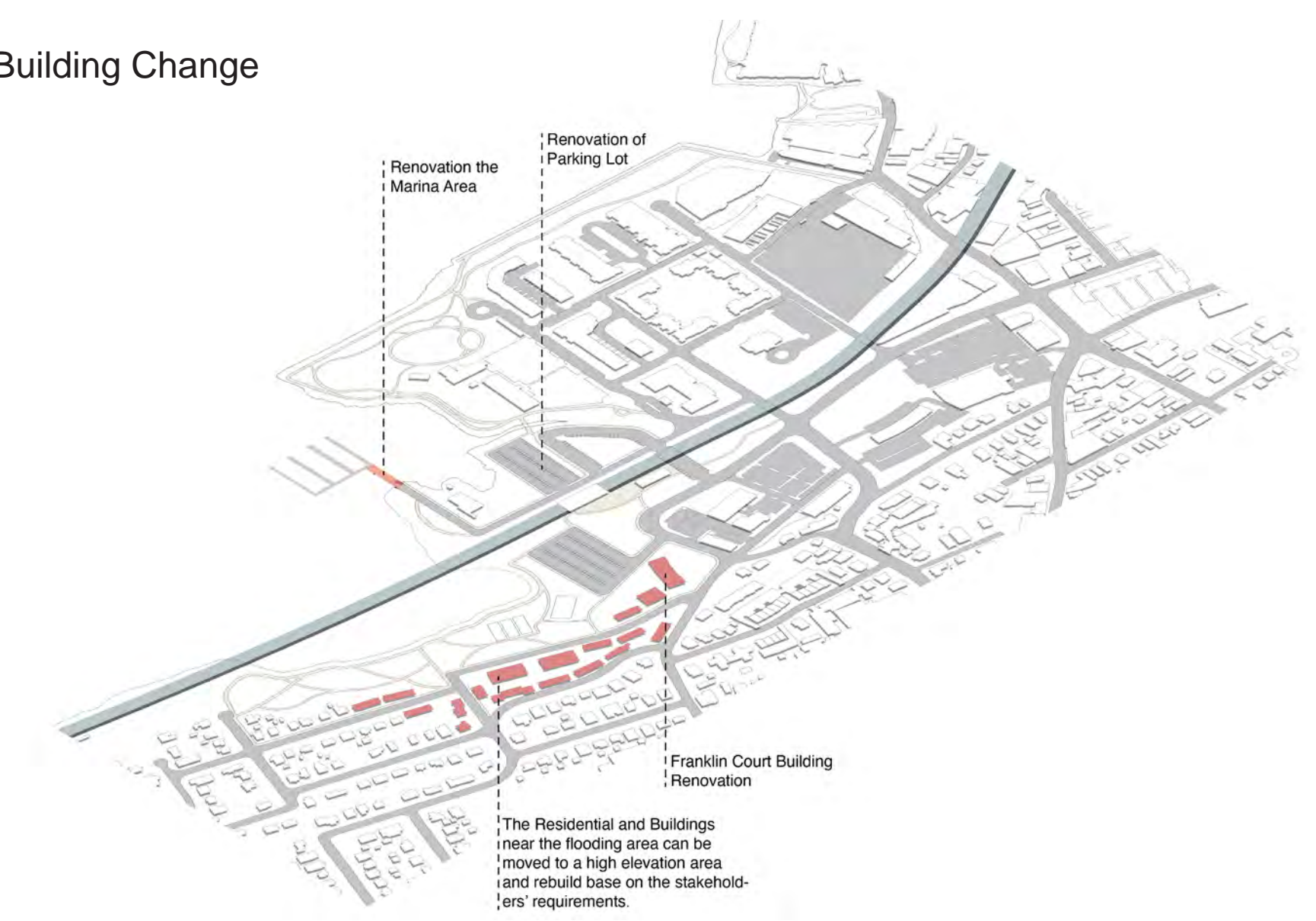
## Cut and Fill



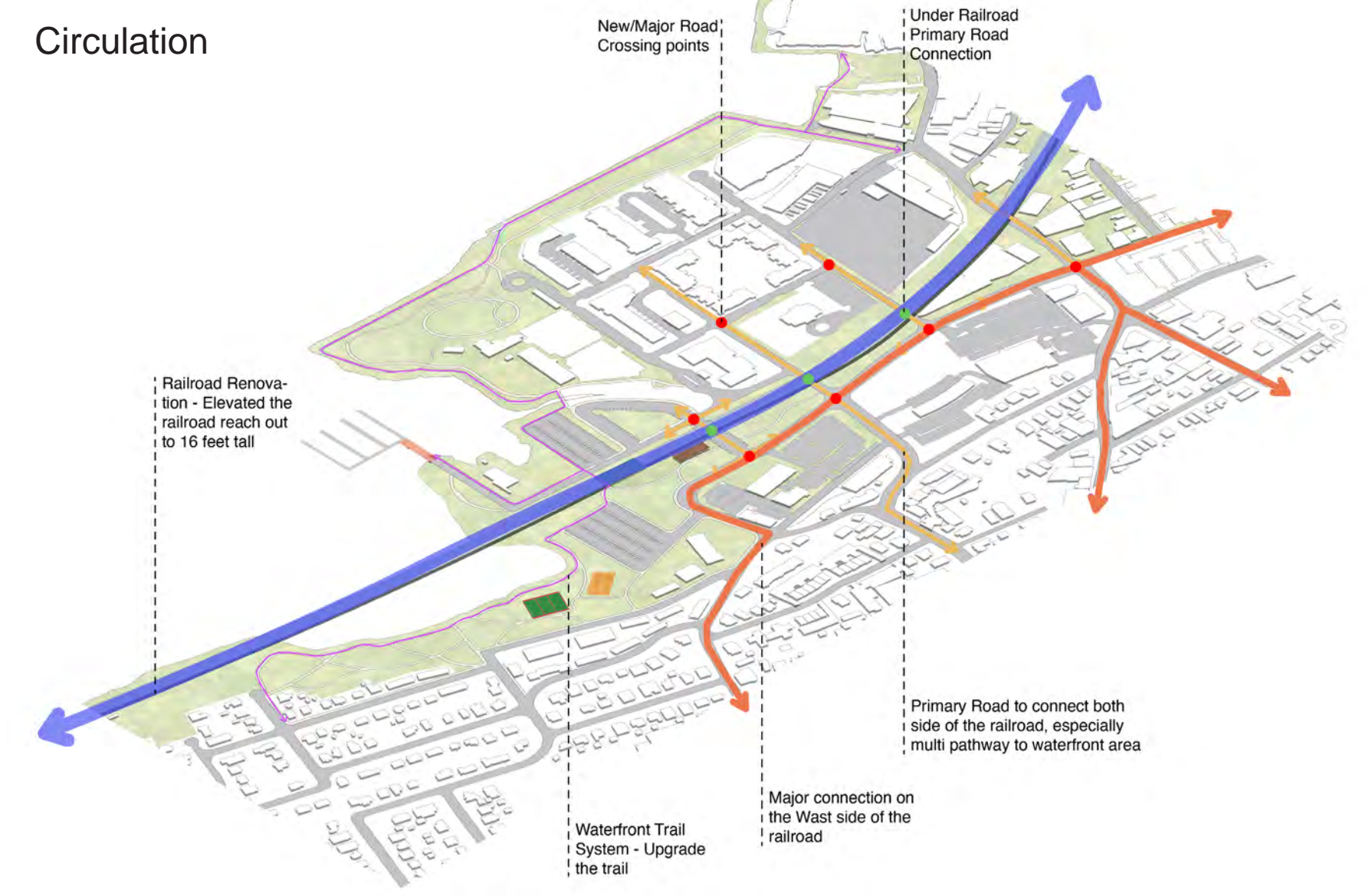
## Green Infrastructure



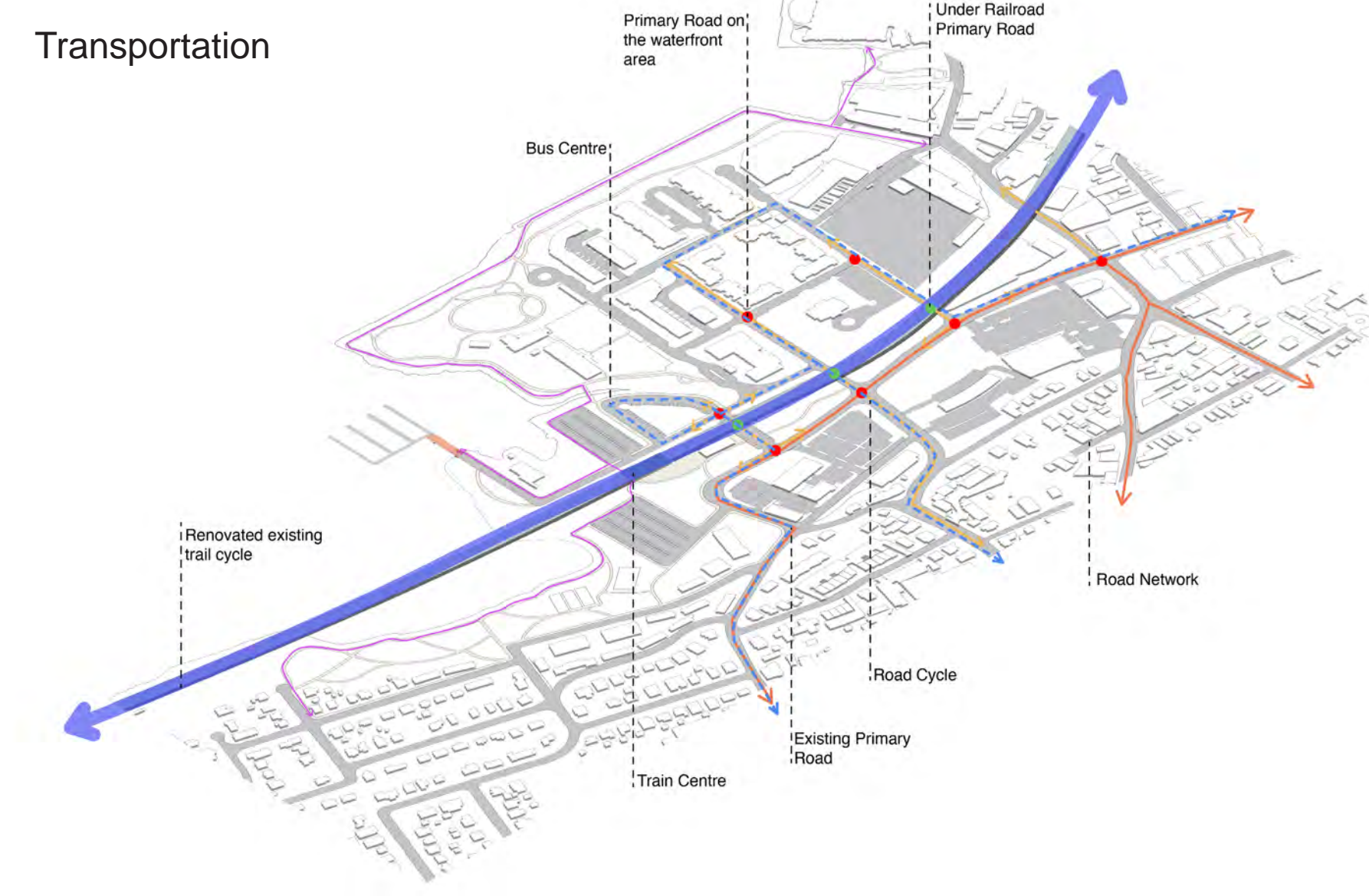
## Building Change



## Circulation



## Transportation



Phase 1 - 2030s

Phase 1 - 2050s

Phase 1 - 2080s



- 1) Elevated the Railroad
- 2) Consider about the green space under Railroad
- 3) Redesign the waterfront area near by the Loose Park

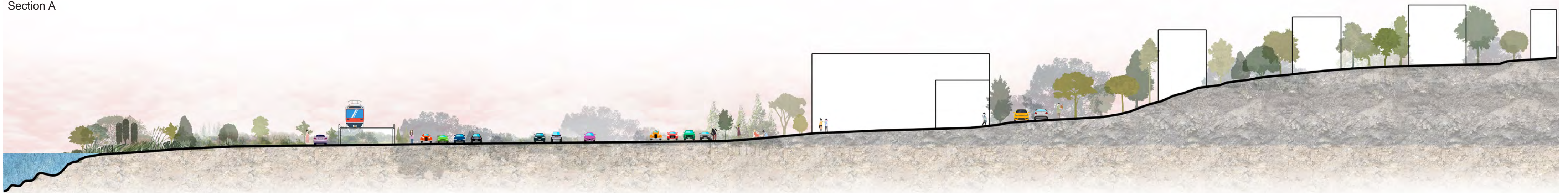
- 1) Franklin Court Renovation
- 2) Cut and Fill the Loose Park area
- 3) Elevated the east side of railroad
- 4) Design the welcome park and reroute the trail between train station and Tarrytown

- 1) Cut and Fill the Loose park area
- 2) Mrsh Design
- 3) Design the waterfront green space and ports field in the park

# Railroad Elevation Section



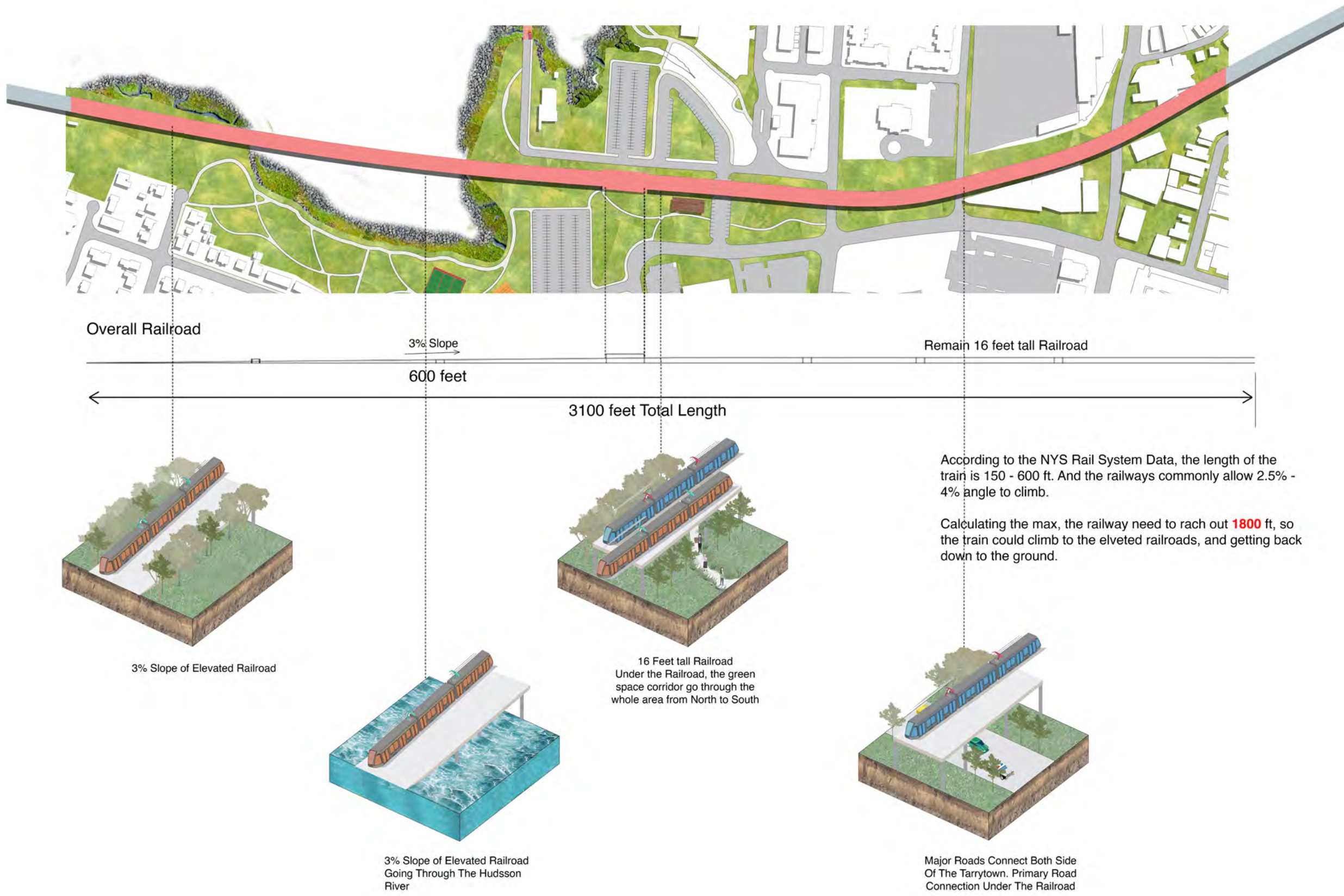
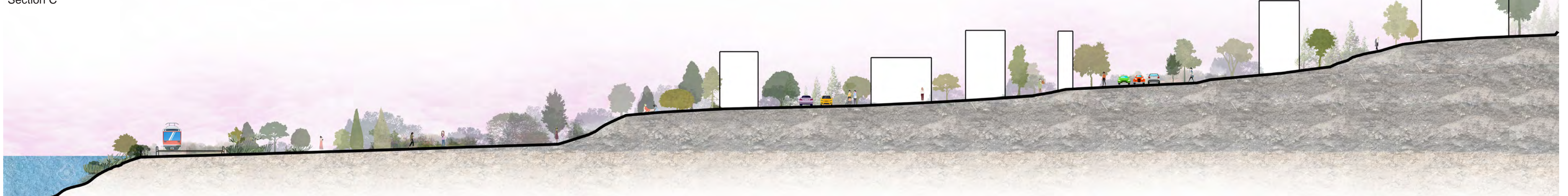
Section A



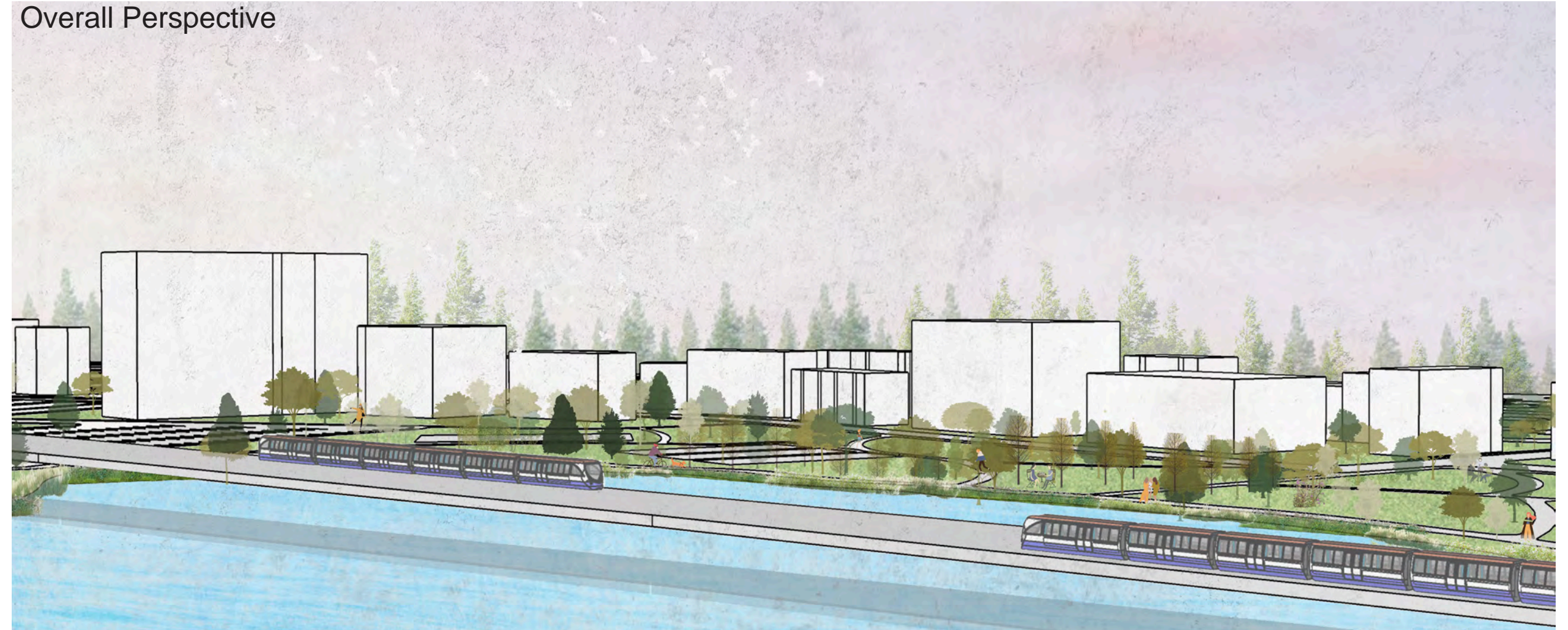
Section B



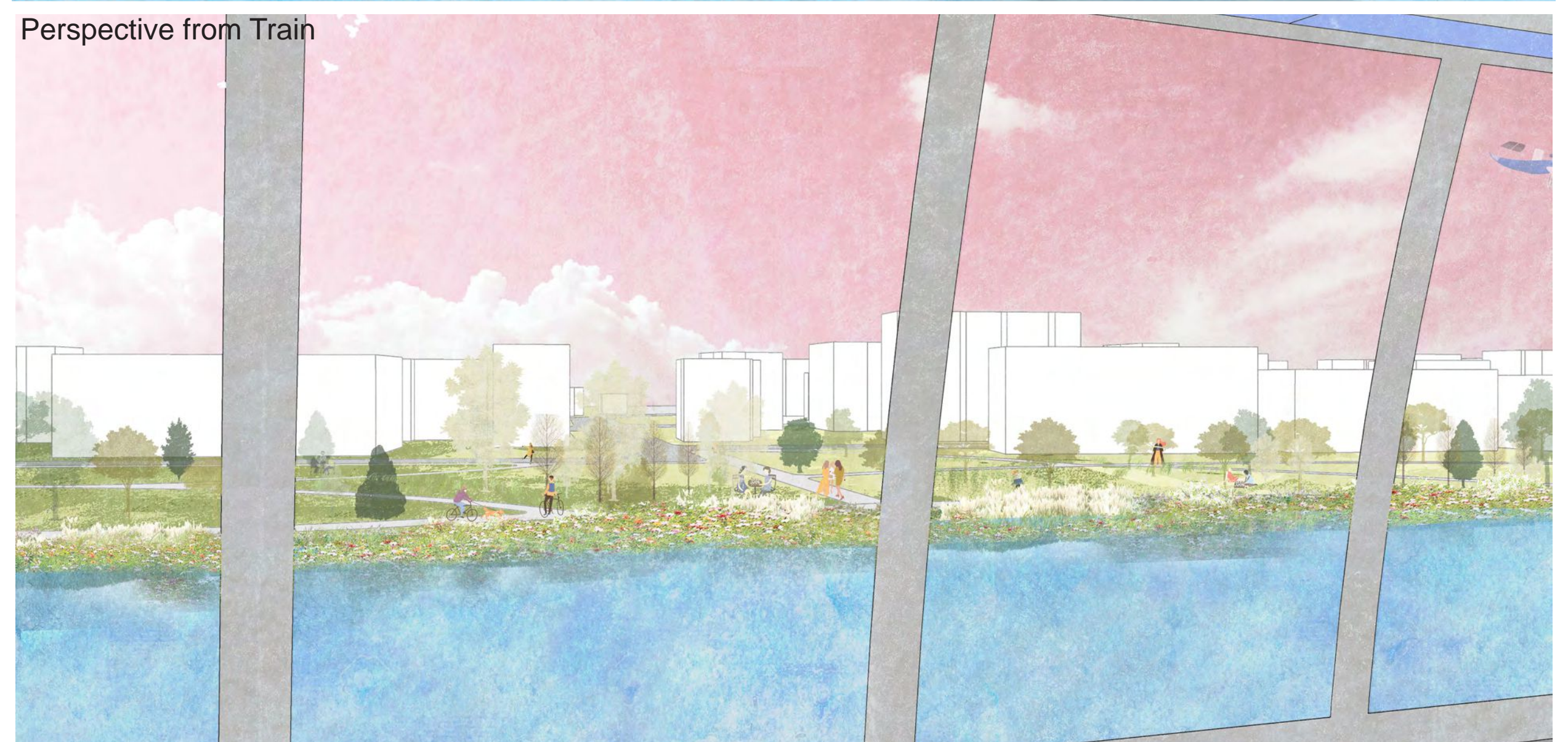
Section C



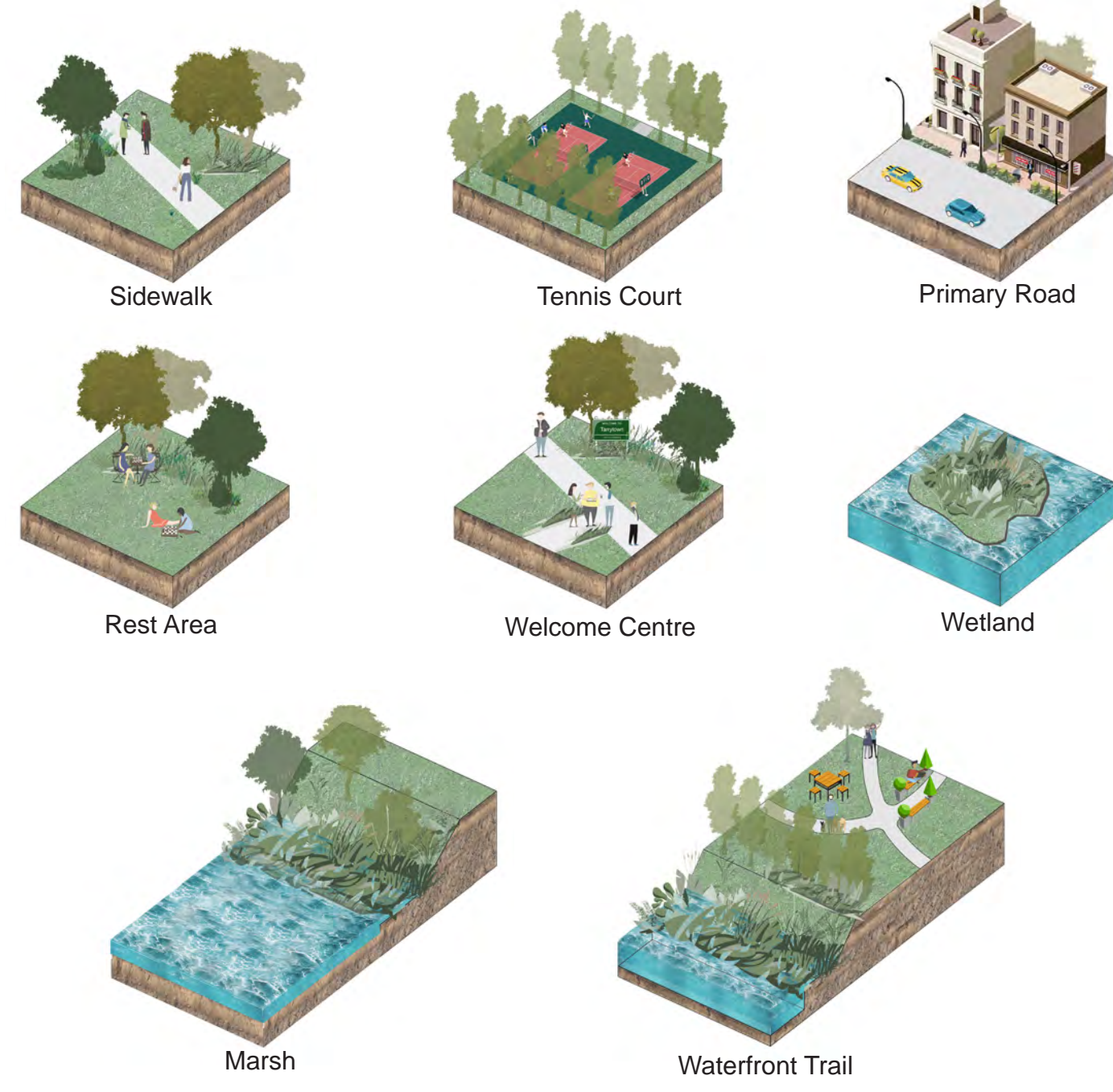
Overall Perspective



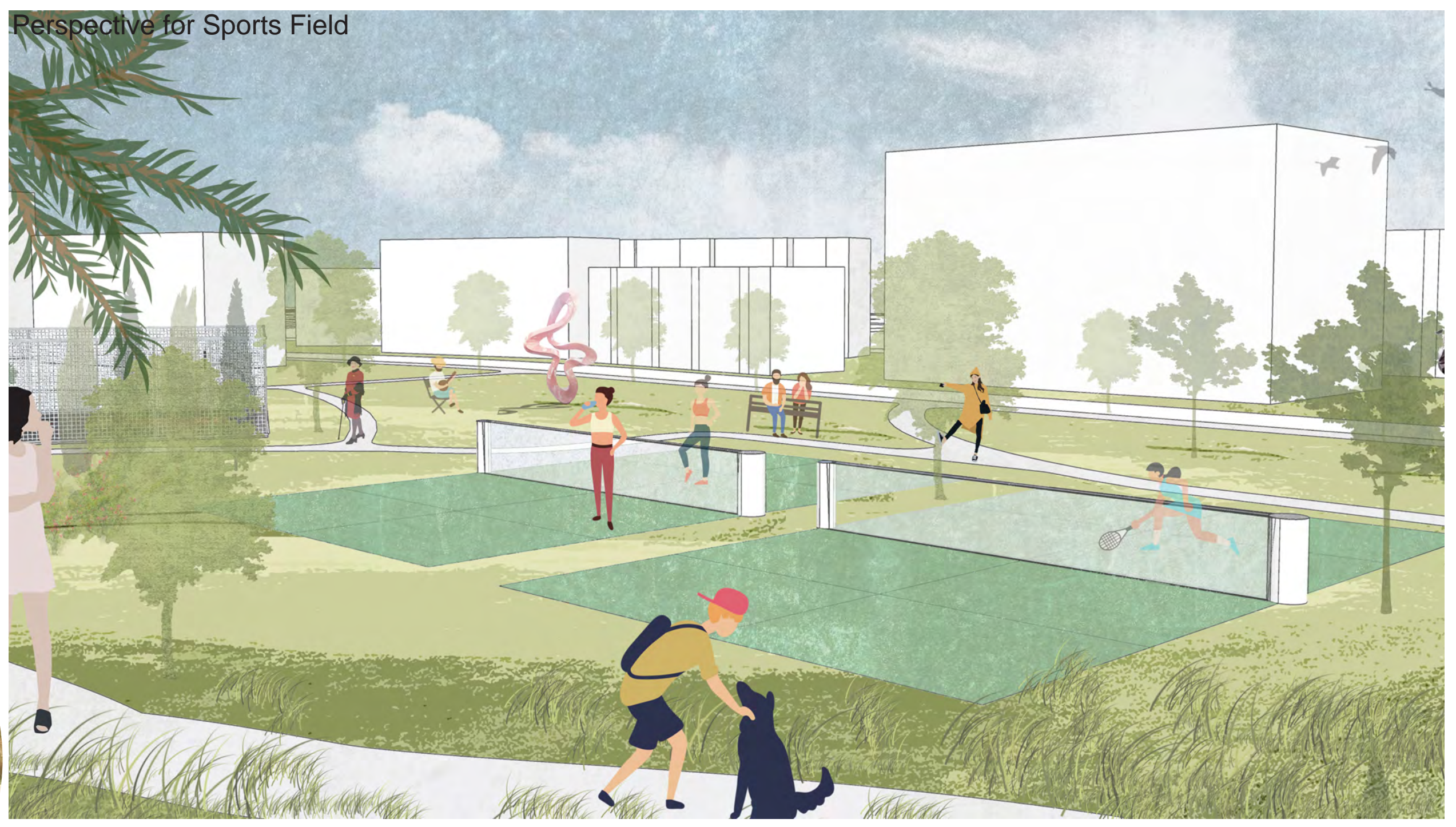
Perspective from Train



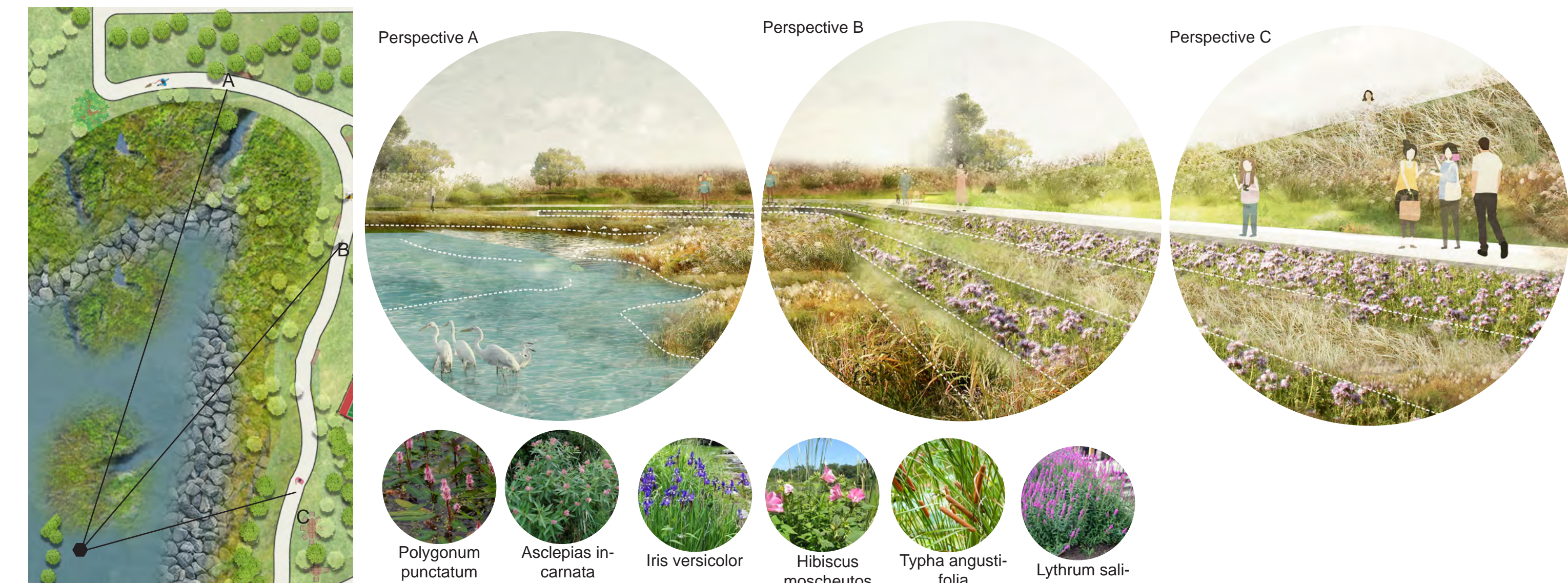
## Waterfront Park



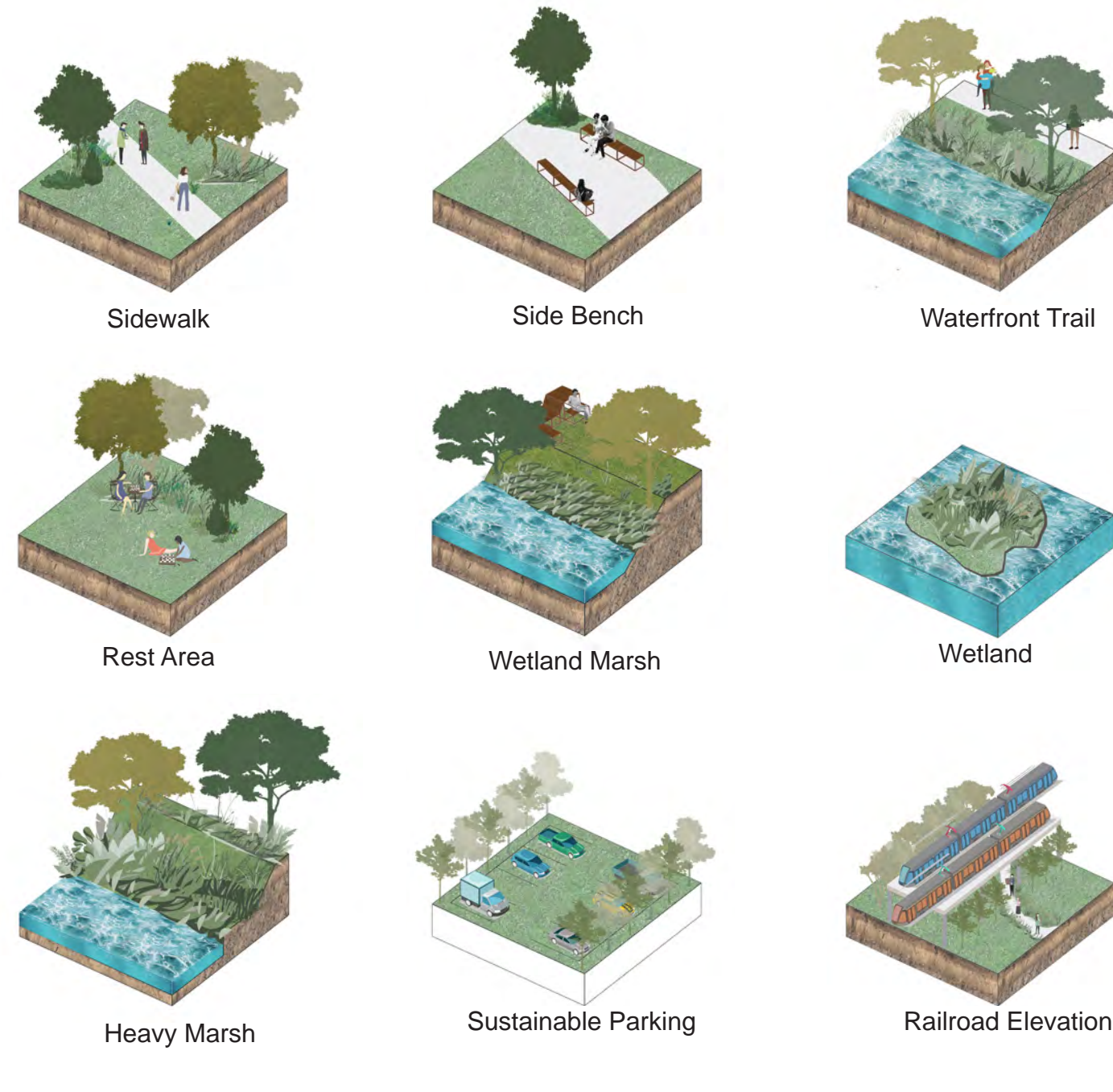
Perspective for Sports Field



## Wetland



## Waterfront Renovation



Primary Road under the Railroad



Perennials



Shrubs



Wetland Tree

