

Important Sites



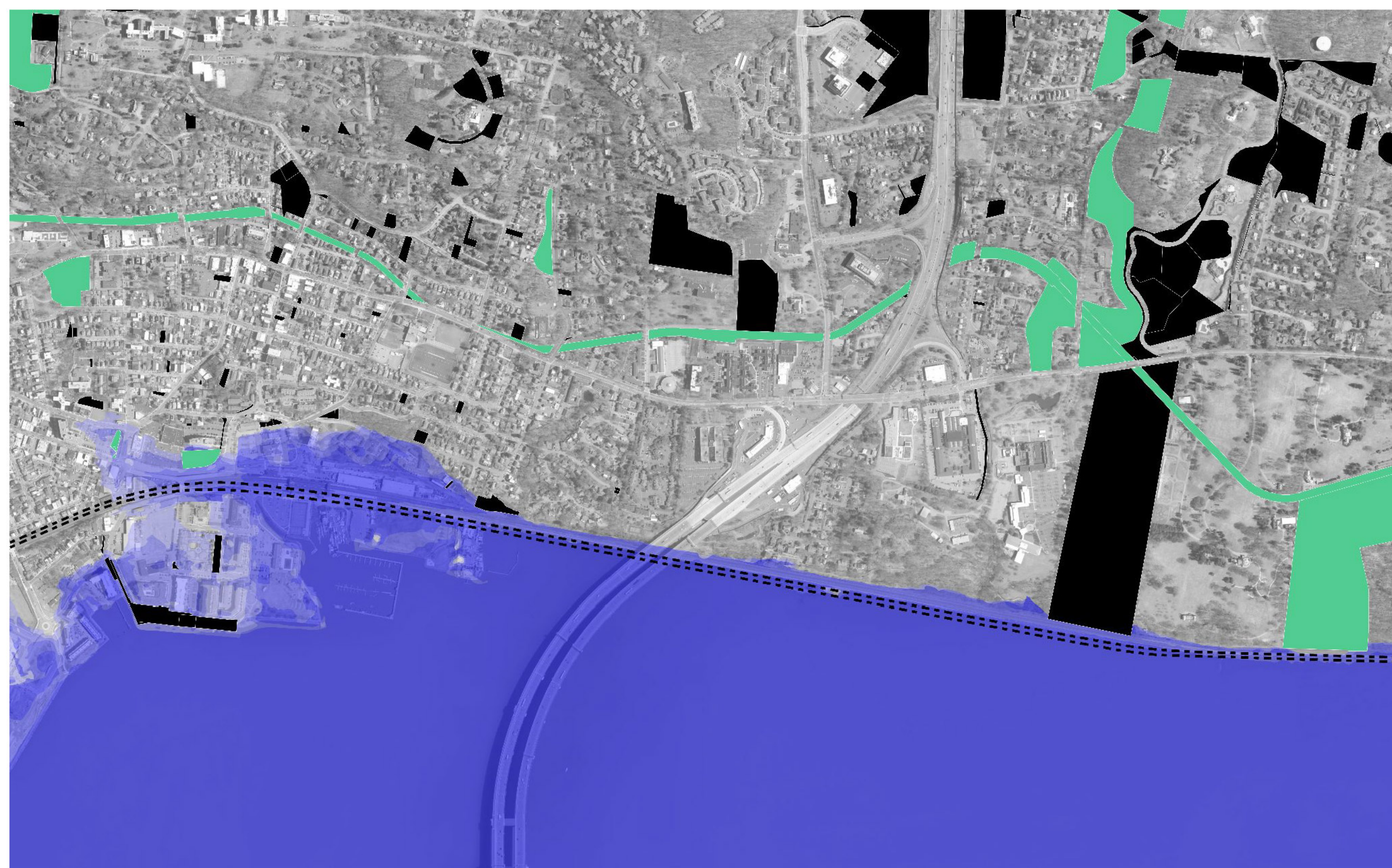
Inundation Scenario

Vulnerable properties, or opportunities?



Landuse

Disconnected upland green network and waterfront

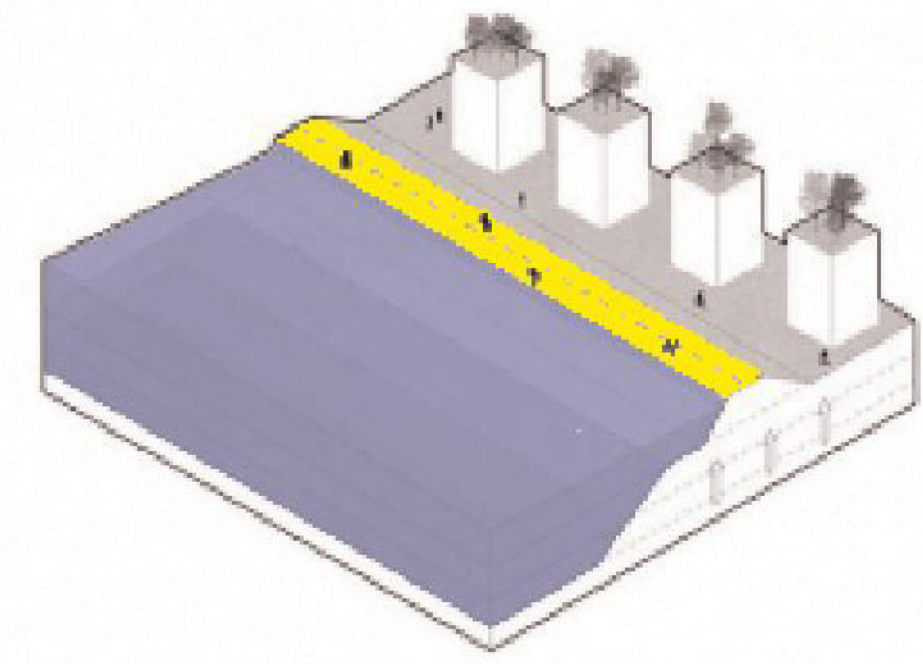


Land Use
 ■ Vacant
 ■ Public Parks, W

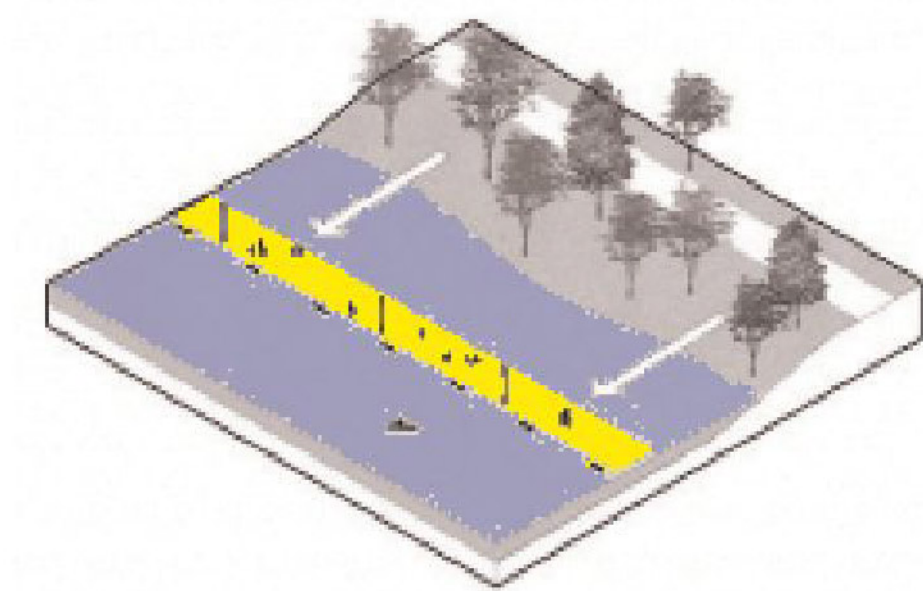
Upland - Waterfront Connector

Many important sites, either of historical or social importance, are clustered along the waterfront of Tarrytown. They are affected by flooding and will be inundated due to sea level rise in the future. This project aims to protect and gradually transform this area through a terracing landscape, and connect the waterfront with the upland, create more access to the currently privatized waterfront.

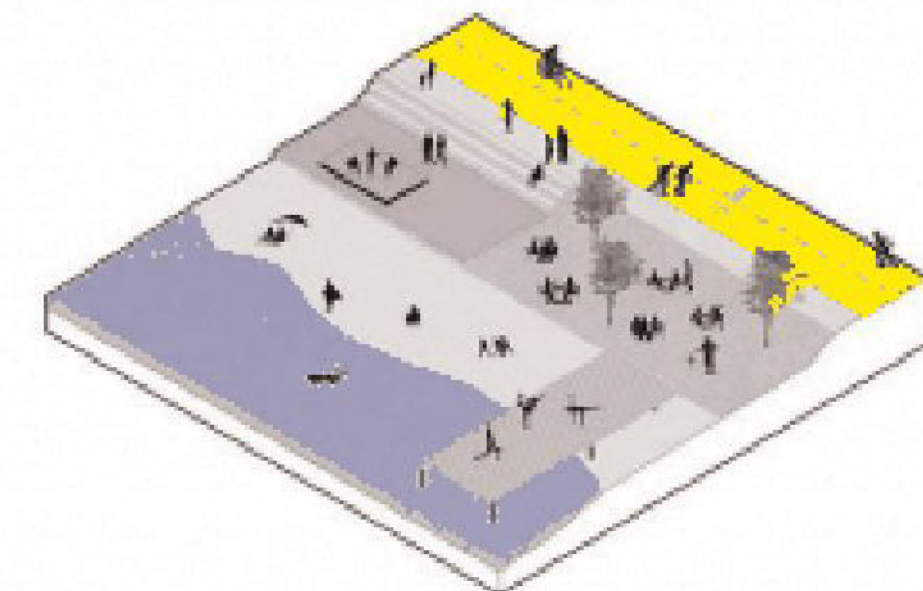
Toolkit



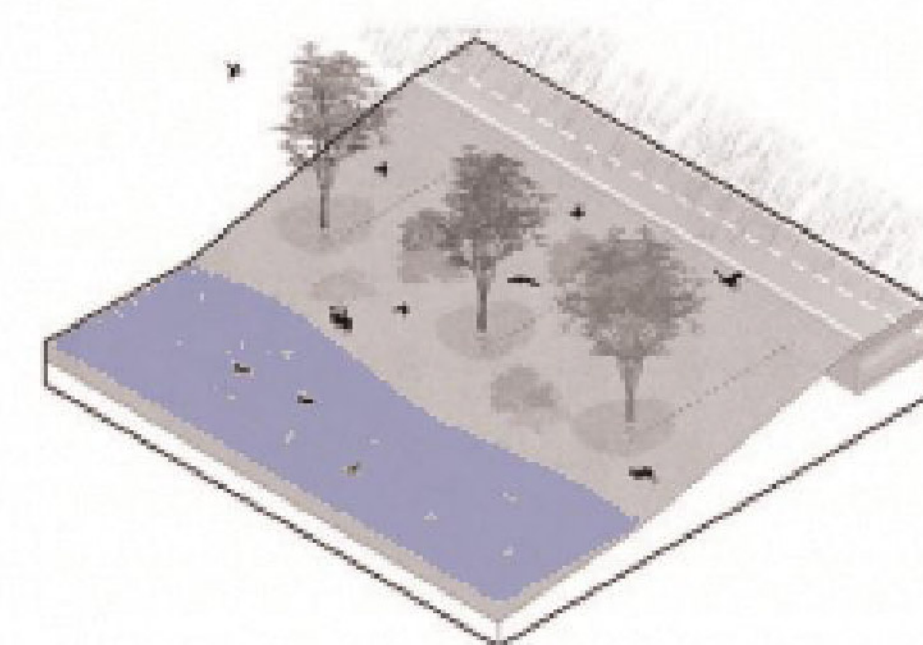
Raised Dike



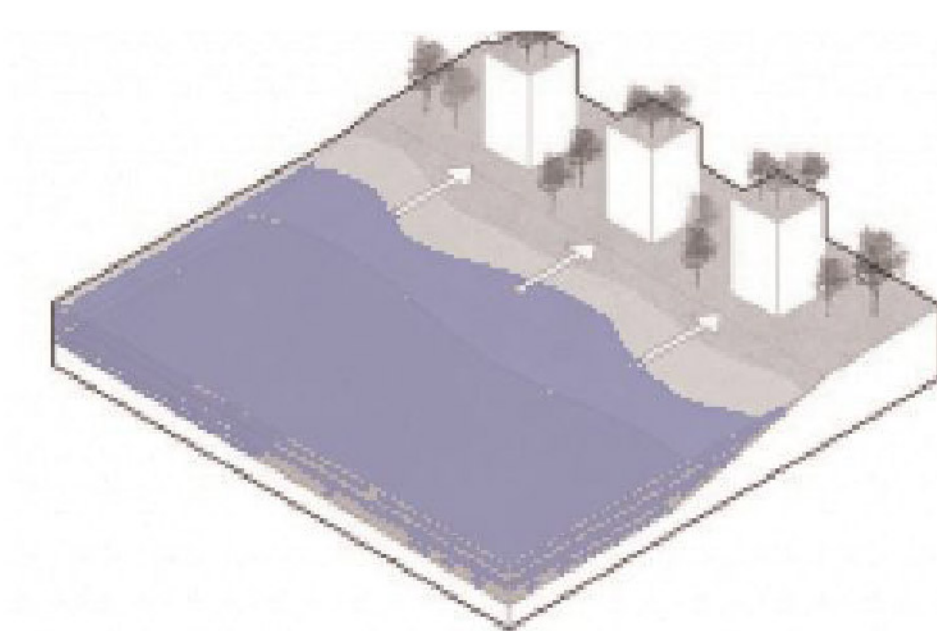
Floating Dock / Seawall



Community Waterfront



Bio Filter / Swale



Relocation

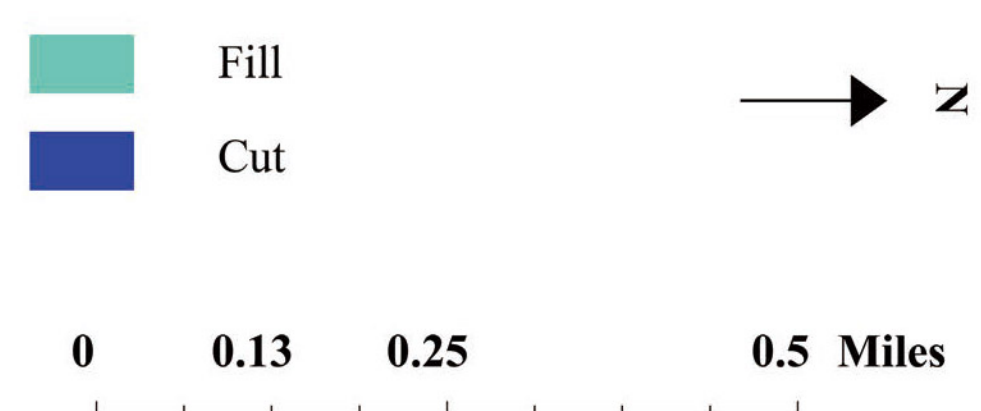


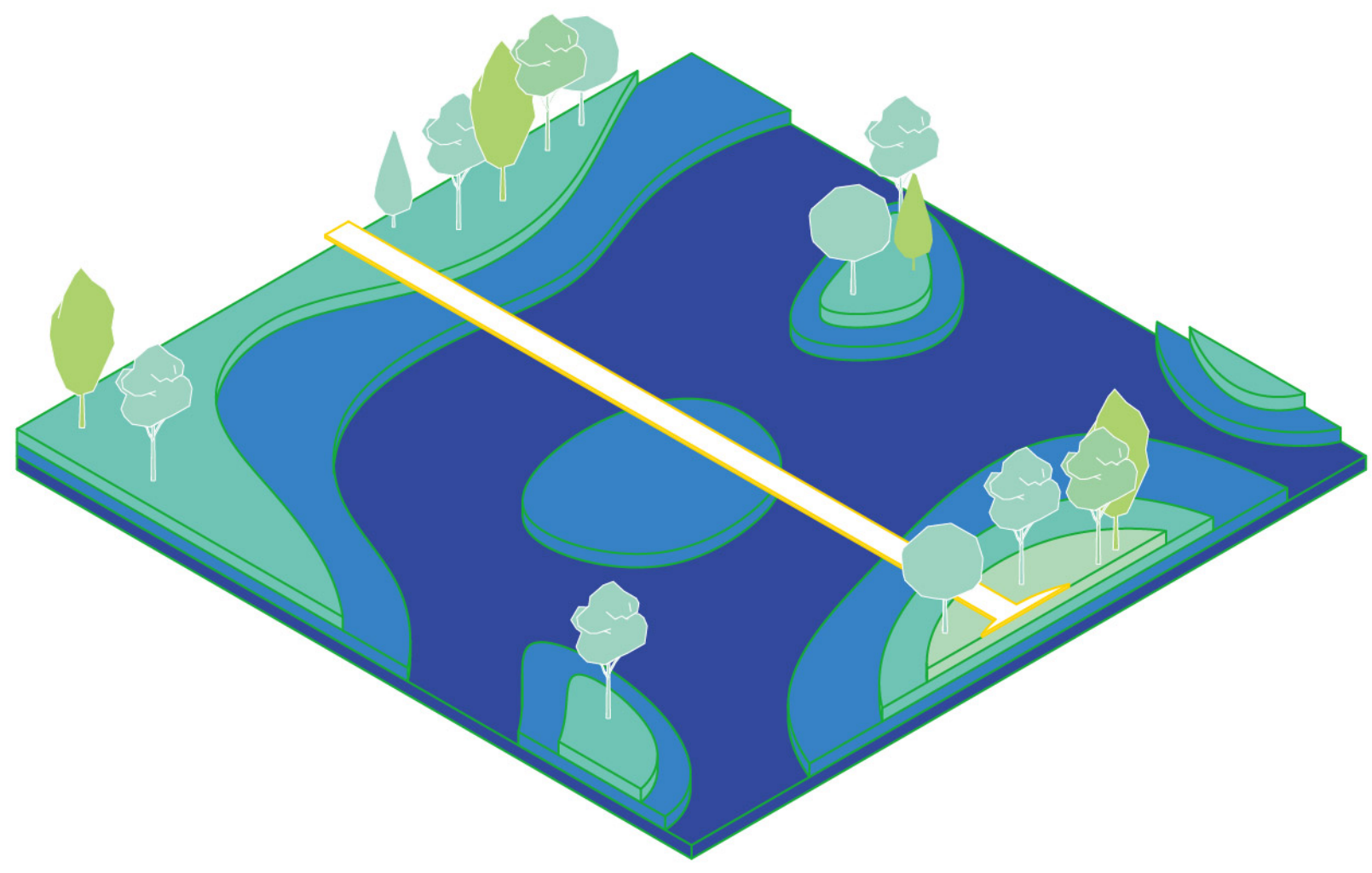
Elevated Riverwalk

Masterplan

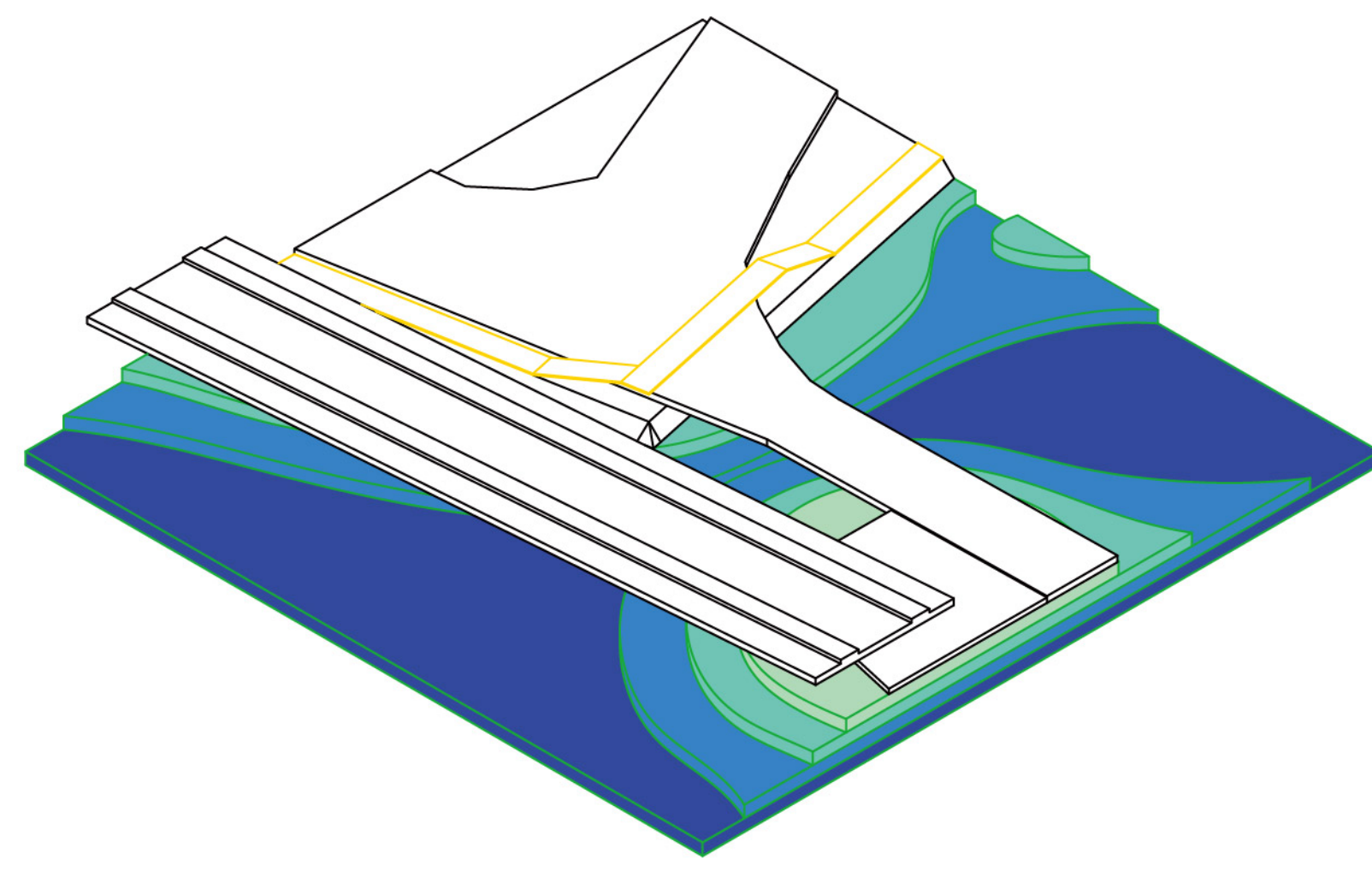


Cut and Fill

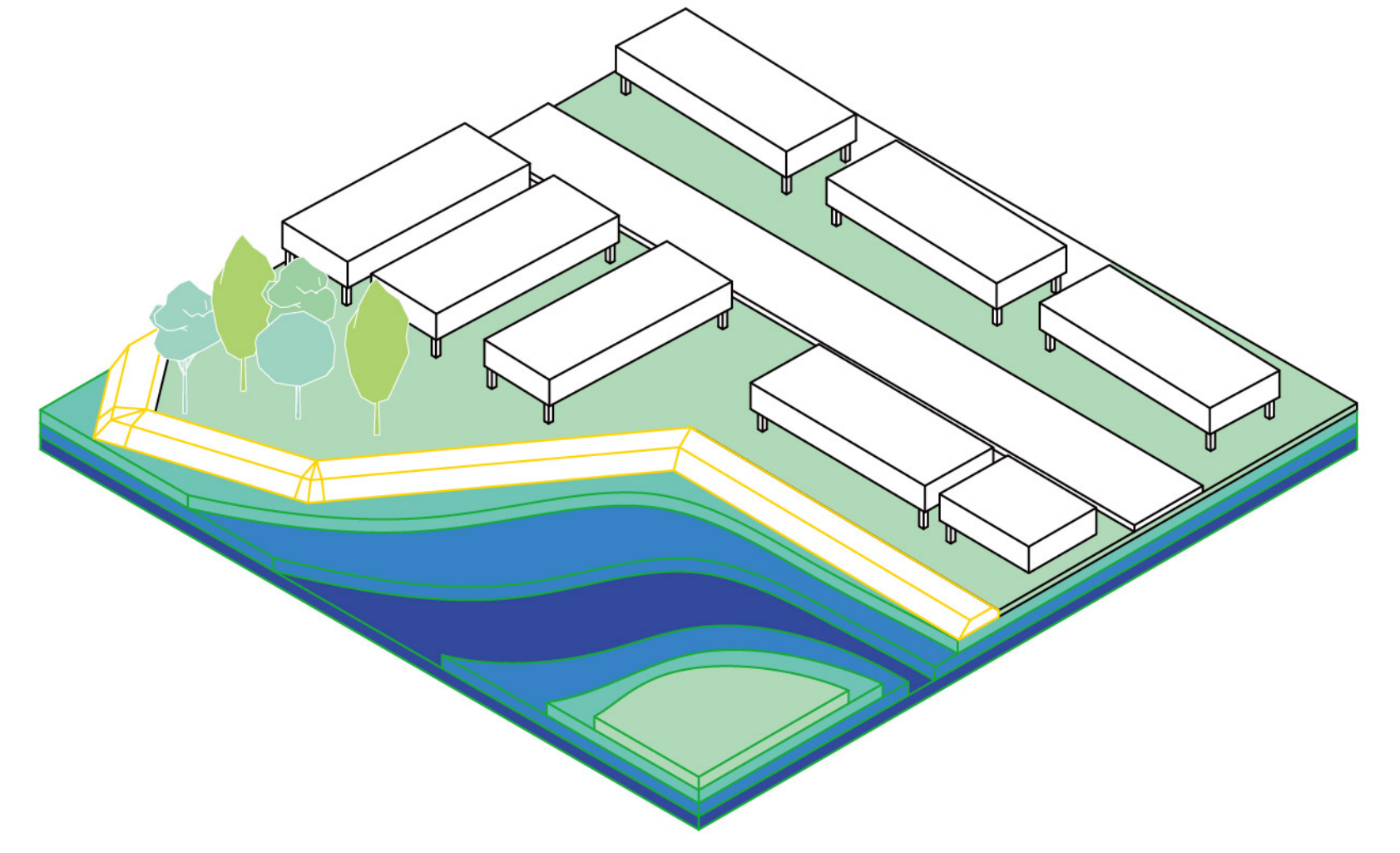




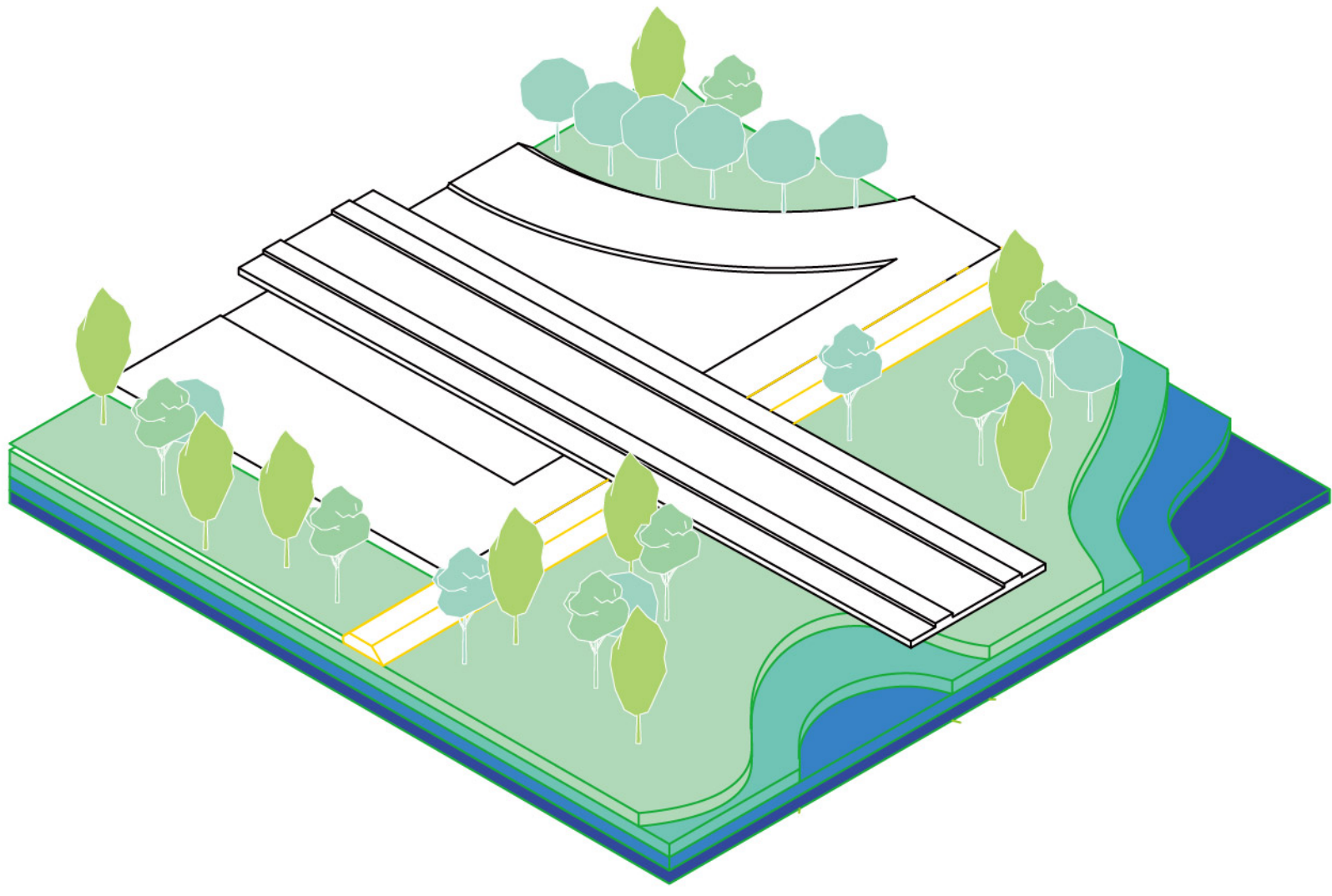
Combination of elevated river walk and tide control structure



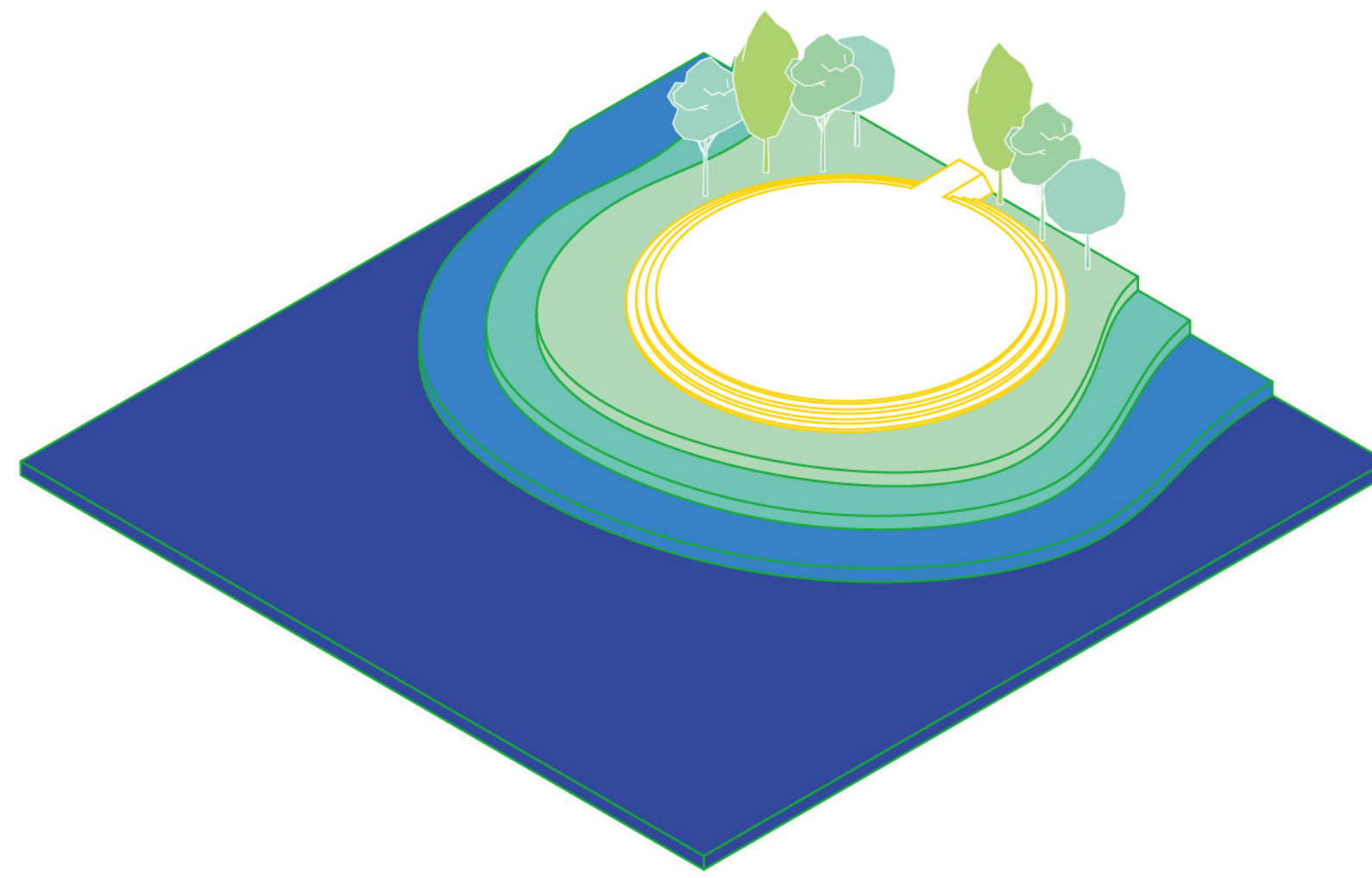
Elevated footbridge for a pedestrian friendly system



Flood adaptive design at Franklin Court



Circulation at New Station Area



Combination of riverscape viewing deck, raised dike and walkway



2020-30



2030-50



2050-80

